

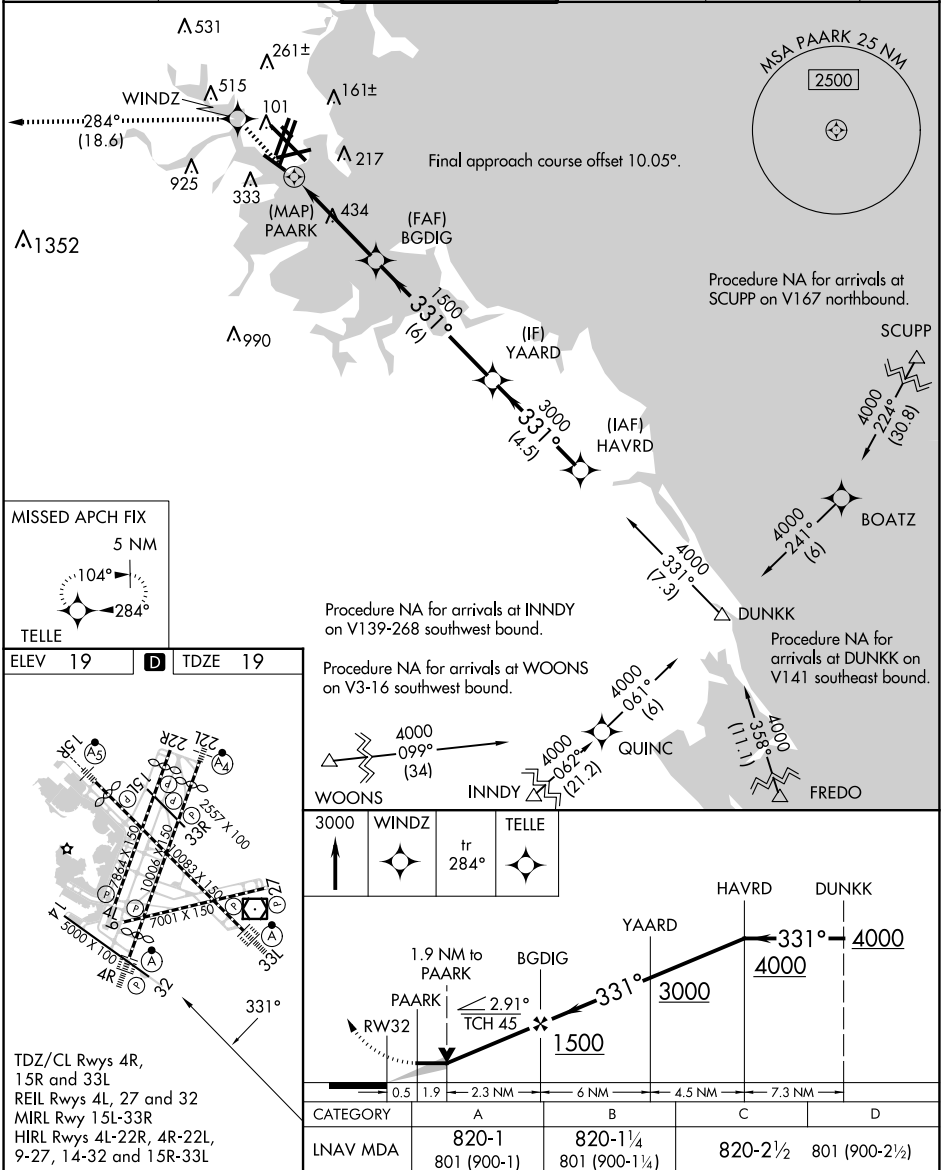
# RNAV (GPS) RWY 32

GENERAL EDWARD LAWRENCE LOGAN INTL (BOS)

APP CRS <b>331°</b>	Rwy Idg TDZE Apt Elev	<b>5000</b> <b>19</b> <b>19</b>
------------------------	-----------------------------	---------------------------------------

RNP APCH - GPS.		BOSTON TOWER <b>128.8 257.8 (WEST)</b> <b>132.225 257.8 (EAST)</b>		GND CON <b>121.75 121.9</b>	CLNC DEL <b>121.65 257.8</b>	CPDLC
D-ATIS <b>135.0</b>	BOSTON APP CON <b>120.6 263.1</b>					

MISSED APPROACH: Climb to 3000 direct WINDZ and on track 284° to TELLE and hold.



NE-1, 20 FEB 2025 to 20 MAR 2025

NE-1, 20 FEB 2025 to 20 MAR 2025