

WAAS CH 77738 W04B	APP CRS 037°	Rwy Idg 7864 TDZE 14 Apt Elev 19
----------------------------------------	------------------------	-------------------------------------------------------------

RNAV (GPS) RWY 4L

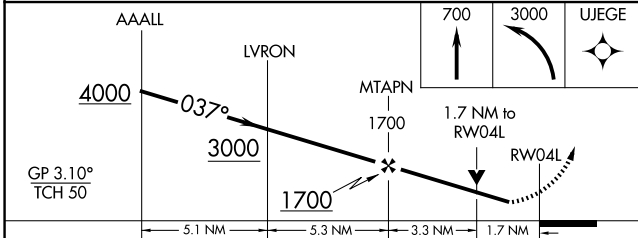
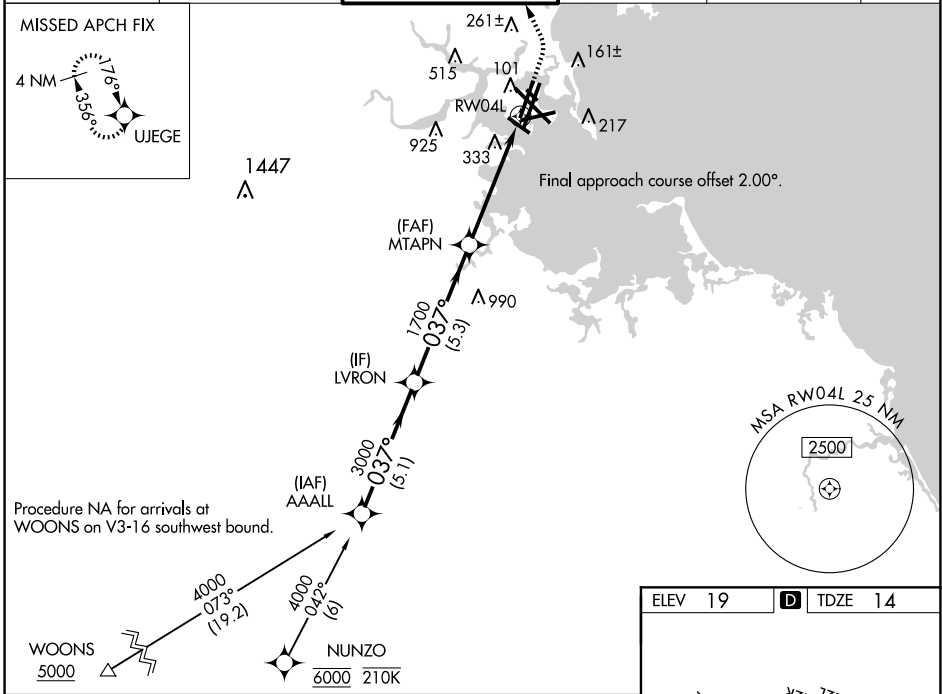
GENERAL EDWARD LAWRENCE LOGAN INTL (BOS)

RNP APCH - GPS.

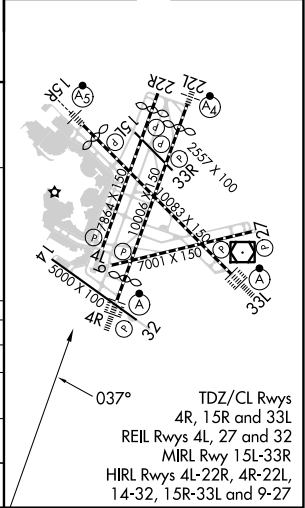
⚠ For uncompensated Baro-VNAV systems, LNAV/VNAV NA below -14°C or above 54°C. Rwy 4L helicopter visibility reduction below RVR 4000 NA. When control tower reports tall vessels in approach area: increase LPV DA to 369 and all Cats visibility to RVR 5500. LPV and LNAV/VNAV NA when vessels taller than 137 feet present.

MISSED APPROACH: Climb to 700 then climbing left turn to 3000 direct UJEGE and hold, continue climb-in-hold to 3000.
Missed approach requires minimum climb of 425 feet per NM to 900.

D-ATIS 135.0	BOSTON APP CON 120.6 263.1	BOSTON TOWER 128.8 257.8 (WEST) 132.225 257.8 (EAST)	GND CON 121.75 121.9	CLNC DEL 121.65 257.8	CPDLC
------------------------	--------------------------------------	---------------------------------------------------------------------------------	--------------------------------	---------------------------------	-------



ELEV 19	D	TDZE 14
----------------	----------	----------------



CATEGORY	A	B	C	D
LPV DA		318/45	304 (300-7%)	
LNAV/VNAV DA#		680-17%	666 (700-17%)	
LNAV/VNAV DA		768-2	754 (800-2)	
LNAV MDA	600/55	586 (600-1)	600-1¾	586 (600-1¾)

RNAV (GPS) RWY 4L

NE-1, 20 FEB 2025 to 20 MAR 2025

NE-1, 20 FEB 2025 to 20 MAR 2025