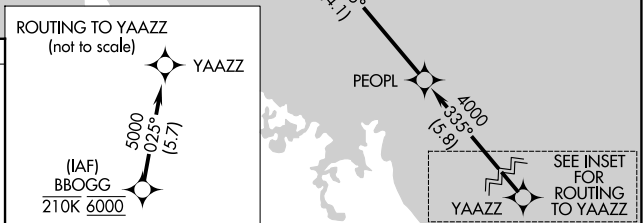
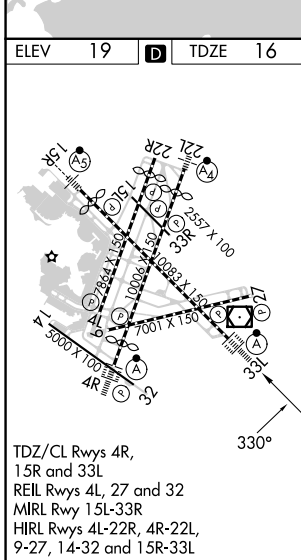
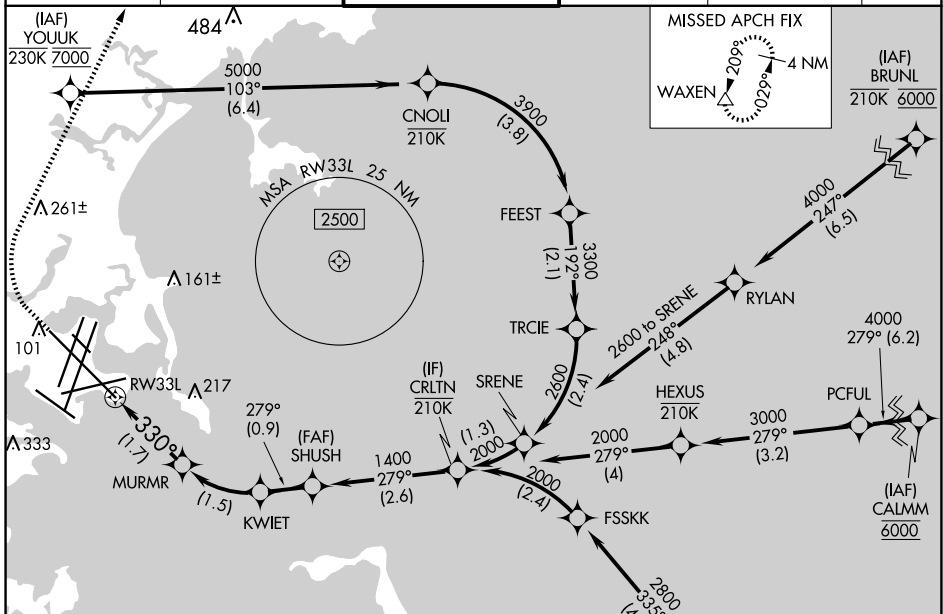


APP CRS	Rwy ldg	<b>10083</b>
<b>330°</b>	TDZE	<b>16</b>
	Apt Elev	<b>19</b>

# RNAV (RNP) X RWY 33L

GENERAL EDWARD LAWRENCE LOGAN INTL (BOS)

RNP AR APCH. RF required.		BOSTON TOWER <b>128.8 257.8 (WEST)</b> <b>132.225 257.8 (EAST)</b>		GND CON <b>121.75 121.9</b>	CLNC DEL <b>121.65 257.8</b>	CPDLC
▼ For uncompensated Baro-VNAV systems, procedure NA below -14°C or above 54°C. For inop ALS, increase RNP 0.30 all Cnts visibility to RVR 4000. ▲ NA		ALSF-2		MISSED APPROACH: Climb to 600 then climbing right turn to 3000 direct WAXEN and hold.		
D-ATIS <b>135.0</b>	BOSTON APP CON <b>120.6 263.1</b>					



VGSI and RNAV glidepath not coincident (VGSI Angle 3.00/TCH 68).

CRLTN	SHUSH	KWJET	MURMR	WAXEN
2000	1400	1099	612	600
GP 3.00°	1400		330°	
TCH 52				
	2.6 NM	0.9 NM	1.5 NM	1.7 NM
CATEGORY	A	B	C	D
RNP 0.30 DA	273/24		257 (300-½)	

**AUTHORIZATION REQUIRED**