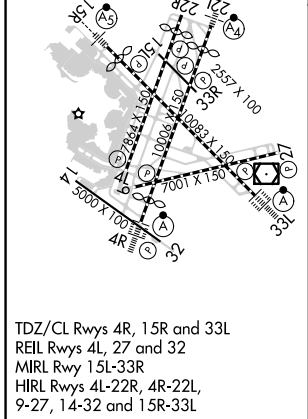
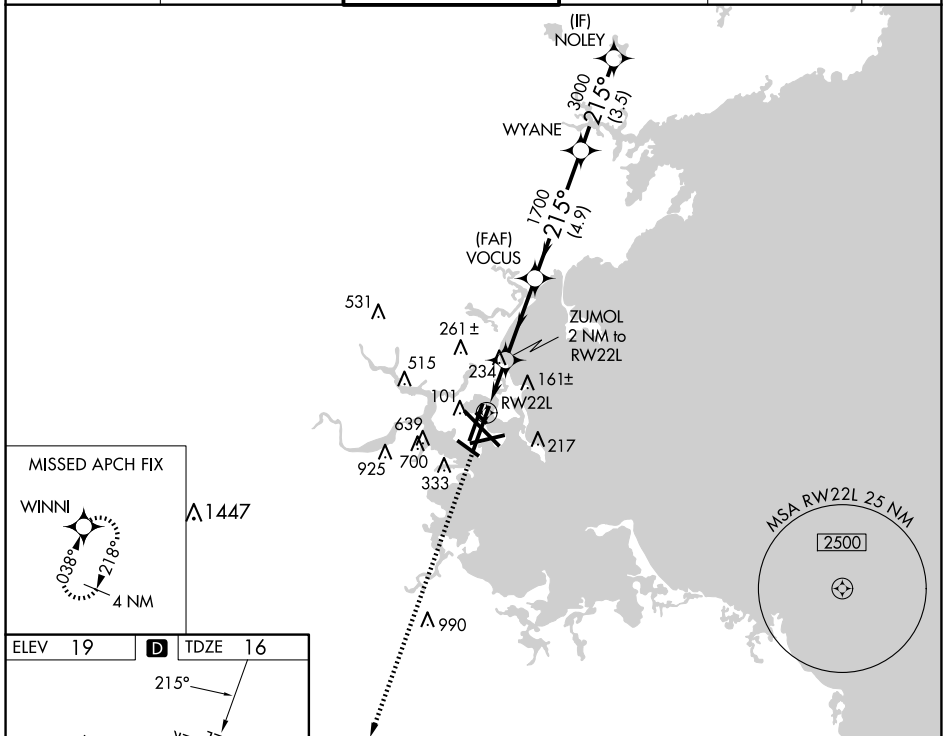


WAAS CH <b>45925</b> <b>W22A</b>	APP CRS <b>215°</b>	Rwy Idg TDZE Apt Elev	<b>8806</b> <b>16</b> <b>19</b>
--	------------------------	-----------------------------	---------------------------------------

# RNAV (GPS) X RWY 22L

GENERAL EDWARD LAWRENCE LOGAN INTL (BOS)

RNP APCH - GPS.					MALSF	MISSED APPROACH: Climb to 3000 direct WINNI and hold.
▼ For inop ALS, increase LNAV/VNAV Cat D visibility to RVR 6000 and LNAV Cat D visibility to 1½ SM. For uncompensated Baro-VNAV systems, LNAV/VNAV NA below -13°C or above 43°C.						
D-ATIS <b>135.0</b>	BOSTON APP CON <b>120.6 263.1</b>	BOSTON TOWER <b>128.8 257.8 (WEST)</b> <b>132.225 257.8 (EAST)</b>		GND CON <b>121.75 121.9</b>	CNLC DEL <b>121.65 257.8</b>	CPDLC



ELEV 19	<b>D</b>	TDZE 16		
TDZ/CL Rwy 4R, 15R and 33L REIL Rwy 4L, 27 and 32 MIRL Rwy 15L-33R HIRL Rwy 4L-22R, 4R-22L, 9-27, 14-32 and 15R-33L				
3000	WINNI	VGSi and RNAV glidepath not coincident (VGSi Angle 3.00°/TCH 71).		
	ZUMOL	2 NM to RWY 22L		
	VOCUS	1700		
	WYANE	1700		
	NOLEY	4000		
	RWY 22L	700		
		1700		
		3000		
		GP 3.00° TCH 55		
		1.4 NM		
		0.6		
		3.1 NM		
		4.9 NM		
		3.5 NM		
CATEGORY	A	B	C	D
LPV DA	216/40		200 (200-¾)	
LNAV/VNAV DA	408/50		392 (400-1)	
LNAV MDA	540/40	524 (600-¾)	540-1¼	524 (600-1¼)