

(SSOXS7.SSOXS) 23334

GENERAL EDWARD LAWRENCE LOGAN INTL (BOS)

SSOXS SEVEN DEPARTURE (RNAV)

AL-58 (FAA)

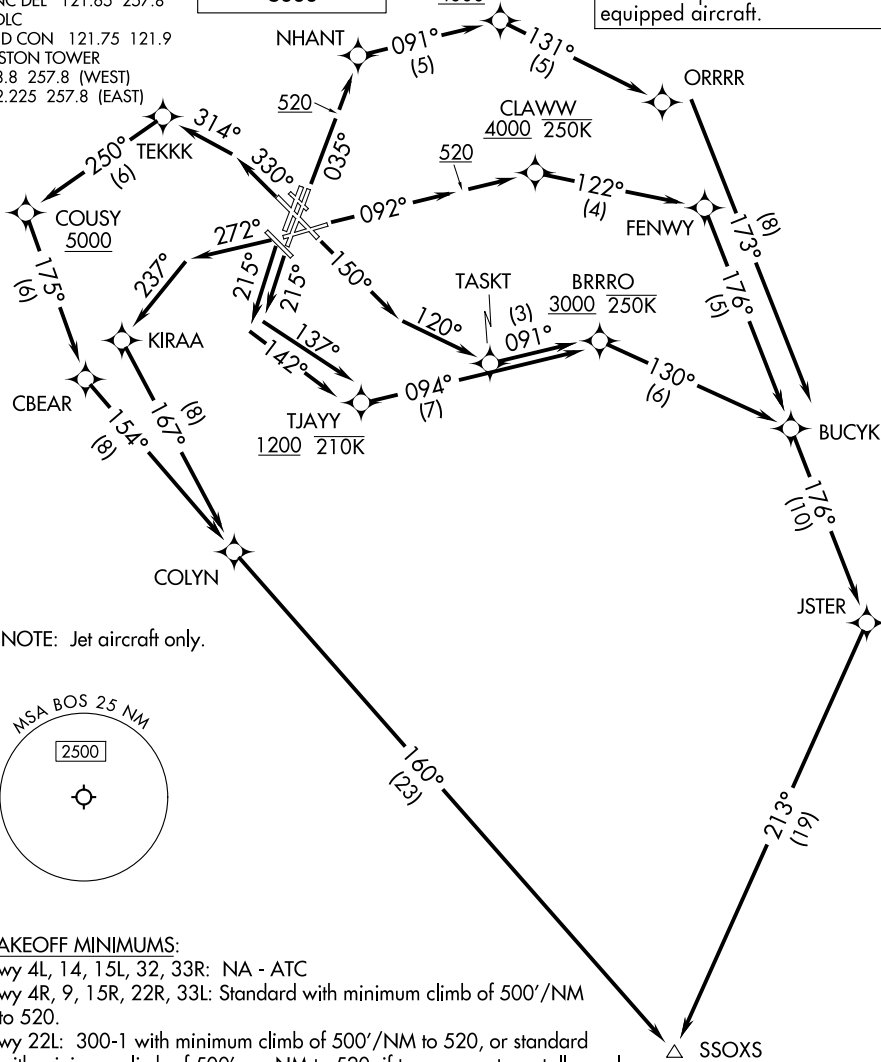
BOSTON, MASSACHUSETTS

BOSTON DEP CON 133.0
 D-ATIS 135.0
 CLNC DEL 121.65 257.8
 CPDLC
 GND CON 121.75 121.9
 BOSTON TOWER
 128.8 257.8 (WEST)
 132.225 257.8 (EAST)

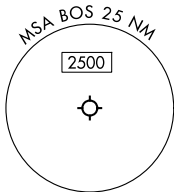
TOP ALTITUDE:
5000

HURBE
 4000

RNAV 1-DME/DME/IRU or GPS.
 RADAR required for non-GPS
 equipped aircraft.



NOTE: Jet aircraft only.



TAKEOFF MINIMUMS:

Rwy 4L, 14, 15L, 32, 33R: NA - ATC

Rwy 4R, 9, 15R, 22R, 33L: Standard with minimum climb of 500'/NM to 520.

Rwy 22L: 300-1 with minimum climb of 500'/NM to 520, or standard with minimum climb of 500' per NM to 520, if tower reports no tall vessels in the departure area.

Rwy 27: Standard with minimum climb of 500'/NM to 1300.

BUZRD

SANDY POINT

SEY

(NARRATIVE ON FOLLOWING PAGE)

NOTE: Chart not to scale.

SSOXS SEVEN DEPARTURE (RNAV)

BOSTON, MASSACHUSETTS

(SSOXS7.SSOXS)

30NOV23

GENERAL EDWARD LAWRENCE LOGAN INTL (BOS)

NE-1, 20 FEB 2025 to 20 MAR 2025

NE-1, 20 FEB 2025 to 20 MAR 2025



DEPARTURE ROUTE DESCRIPTION

TAKEOFF RUNWAY 4R: Climb on heading 035° to 520, then direct NHANT, then on track 091° to cross HURBE at or above 4000, thence....

TAKEOFF RUNWAY 9: Climb on heading 092° to 520, then direct CLAWW at or above 4000 and at or below 250K, thence....

TAKEOFF RUNWAY 15R: Climb on heading 150° to intercept course 120° to TASKT, do not exceed 210K until 520' MSL, thence....

TAKEOFF RUNWAY 22L: Climb on heading 215° to intercept course 137° to cross TJAYY at or above 1200 and at or below 210K, thence....

TAKEOFF RUNWAY 22R: Climb on heading 215° to intercept course 142° to cross TJAYY at or above 1200 and at or below 210K, thence....

TAKEOFF RUNWAY 27: Climb on heading 272° to intercept course 237° to KIRAA, thence....

TAKEOFF RUNWAY 33L: Climb on heading 330° to intercept course 314° to TEKKK, then on track 250° to cross COUSY at or above 5000, thence....

....on depicted route to SSOXS. Maintain 5000. Expect clearance to filed altitude within ten minutes after departure.

NE-1, 20 FEB 2025 to 20 MAR 2025

NE-1, 20 FEB 2025 to 20 MAR 2025