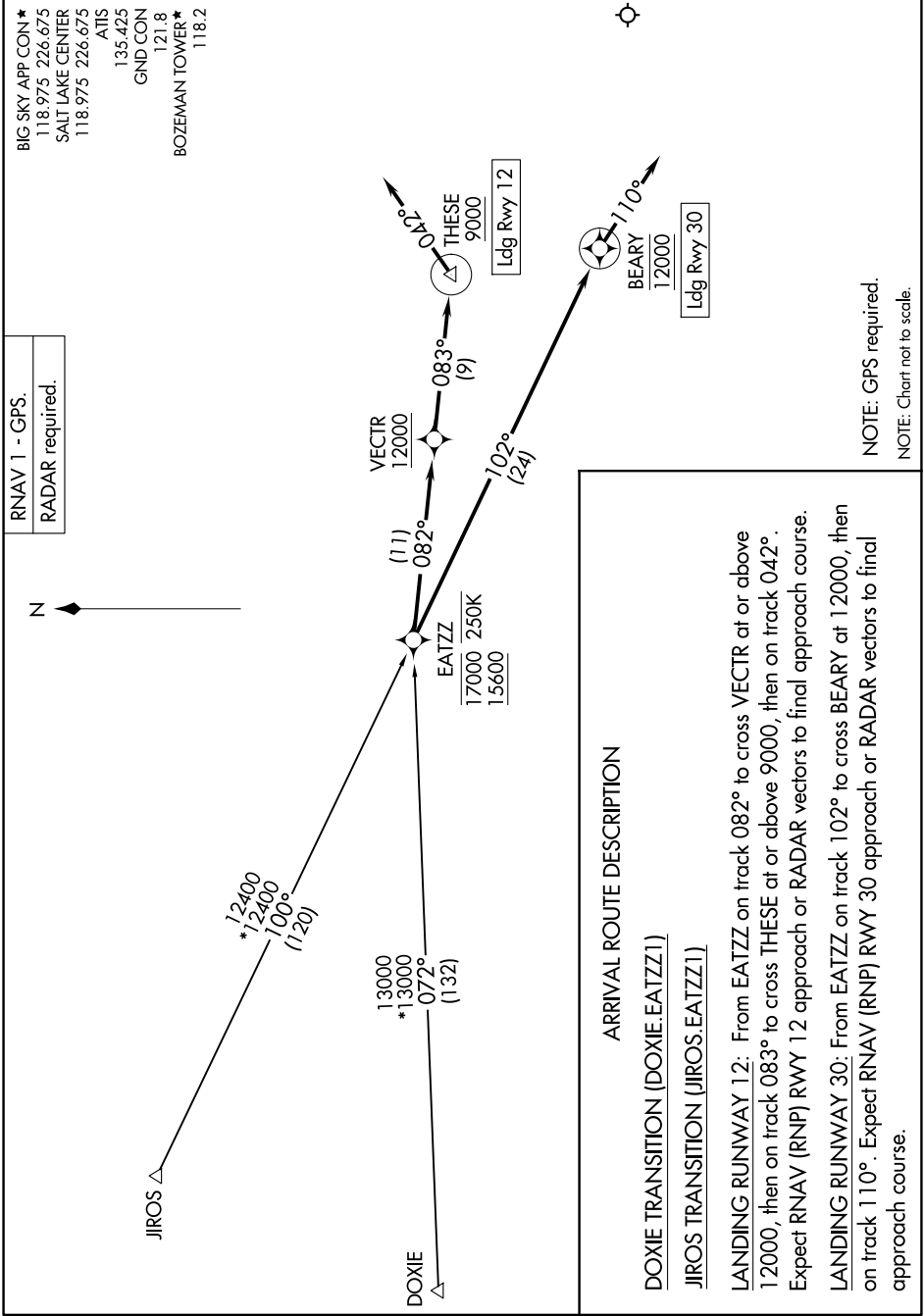


EATZZ ONE ARRIVAL (RNAV)

AL-59 (FAA)

BOZEMAN YELLOWSTONE INTL (BZN)
BOZEMAN, MONTANA

NW-1, 20 FEB 2025 to 20 MAR 2025



ARRIVAL ROUTE DESCRIPTION

DOXIE TRANSITION (DOXIE.EATZZ1)

JIROS TRANSITION (JIROS.EATZZ1)

LANDING RUNWAY 12: From EATZZ on track 082° to cross VECTR at or above 12000, then on track 083° to cross THESE at or above 9000, then on track 042°. Expect RNAV (RNP) RWY 12 approach or RADAR vectors to final approach course.

LANDING RUNWAY 30: From EATZZ on track 102° to cross BEARY at 12000, then on track 110°. Expect RNAV (RNP) RWY 30 approach or RADAR vectors to final approach course.

NOTE: GPS required.
NOTE: Chart not to scale.

NW-1, 20 FEB 2025 to 20 MAR 2025