

LOC I-BZN 109.3	APP CRS 123°	Rwy ldg TDZE 8994 4443	Apt Elev 4473
---------------------------	------------------------	--------------------------------------------	-------------------------

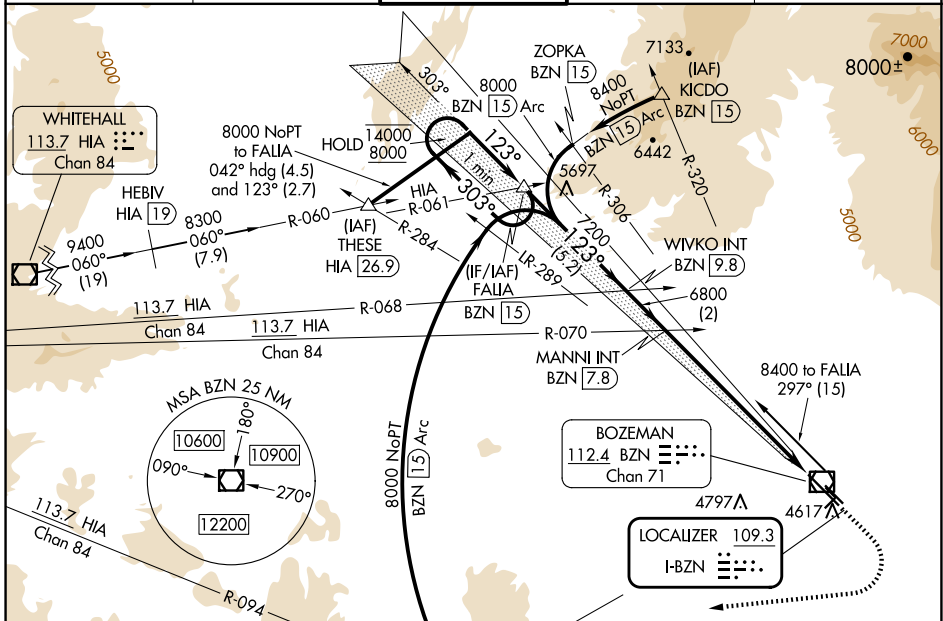
ILS or LOC RWY 12

BOZEMAN YELLOWSTONE INTL (BZN)

RADAR required for procedure entry at BRIGR INT.

MALSRL MISSED APPROACH: Climb to 5200 then climbing right turn to 9000 on heading 250° and on BZN VOR/DME R-223 to BRIGR INT/BZN 15 DME and hold. Continue climb-in-hold to 9000.

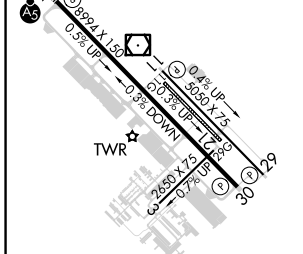
ATIS 135.425	BIG SKY APP CON ★ 118.975 226.675	BOZEMAN TOWER★ 118.2 (CTAF) 0	GND CON 121.8	UNICOM 122.95
------------------------	---------------------------------------------	-----------------------------------------	-------------------------	-------------------------



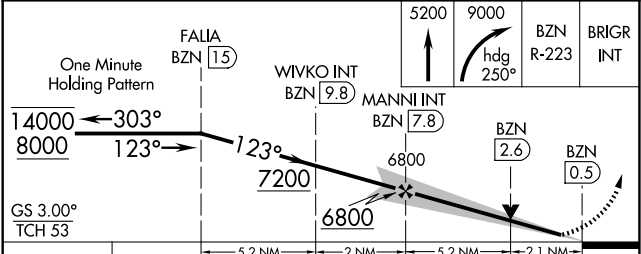
NW-1, 20 FEB 2025 to 20 MAR 2025

NW-1, 20 FEB 2025 to 20 MAR 2025

ELEV 4473	TDZE 4443
Rwy 11G-29G: 2802 X 80	



REIL Rwy 30	HIRL Rwy 12-30	MIRL Rwy 11-29			
FAF to MAP 7.3 NM					
Knots	60	90	120	150	180
Min:Sec	7:18	4:52	3:39	2:55	2:26



CATEGORY	A	B	C	D
S-ILS 12	4643-1/2 200 (200-1/2)			
S-LOC 12	5160-1/2	717 (700-1/2)	5160-1 5/8	717 (700-1 5/8)
<input checked="" type="checkbox"/> CIRCLING	5160-1	687 (700-1)	5160-2	5360-3
			687 (700-2)	887 (900-3)