

APP CRS <b>303°</b>	Rwy Idg TDZE Apt Elev	<b>8994</b> <b>4462</b> <b>4473</b>
------------------------	-----------------------------	---

# RNAV (RNP) Z RWY 30

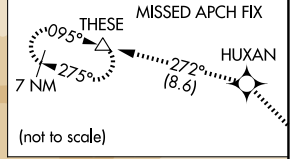
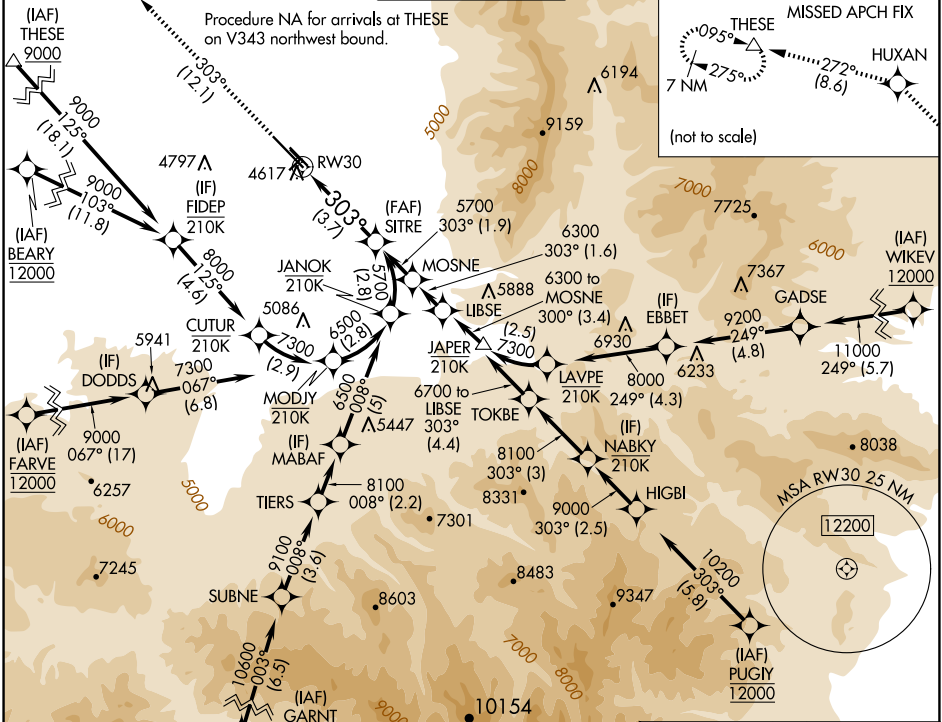
## BOZEMAN YELLOWSTONE INTL (BZN)

RNP AR APCH - GPS.

**⚠** For uncompensated Baro-VNAV systems, procedure NA below -27°C or above 54°C. When local altimeter setting not received, procedure NA.

**⚠** MISSED APPROACH: Climb to 10000 on track 303° to HUXAN and on track 272° to THESE and hold, continue climb-in-hold to 10000.

ATIS <b>135.425</b>	BIG SKY APP CON ★ <b>118.975 226.675</b>	BOZEMAN TOWER ★ <b>118.2 (CTAF) 0</b>	GND CON <b>121.8</b>	UNICOM <b>122.95</b>
------------------------	---	--	-------------------------	-------------------------

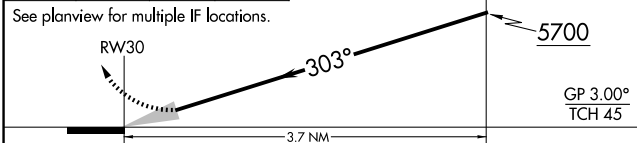


NW-1, 20 FEB 2025 to 20 MAR 2025

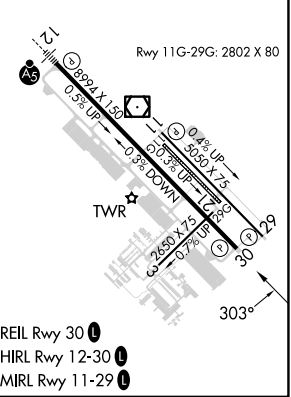
NW-1, 20 FEB 2025 to 20 MAR 2025

ELEV	<b>4473</b>	<b>D</b>	TDZE	<b>4462</b>
------	-------------	----------	------	-------------

10000 ↑ tr 303°	HUXAN ✧	tr 272°	THESE △	SITRE 5700
-----------------------	------------	---------	------------	---------------



CATEGORY	A	B	C	D
RNP 0.11 DA	4806-1		344 (400-1)	
RNP 0.30 DA	4885-1¼		423 (500-1¼)	



### AUTHORIZATION REQUIRED