

APP CRS	Rwy Idg	<b>8994</b>
<b>318°</b>	TDZE	<b>4462</b>
	Apt Elev	<b>4473</b>

# RNAV (GPS) Y RWY 30

BOZEMAN YELLOWSTONE INTL (BZN)

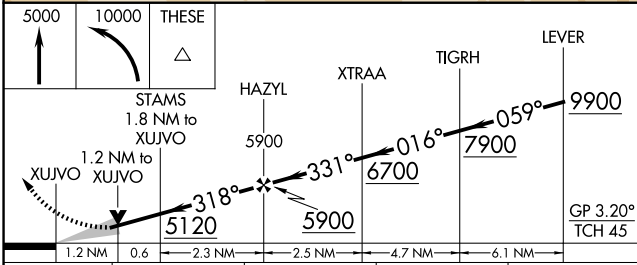
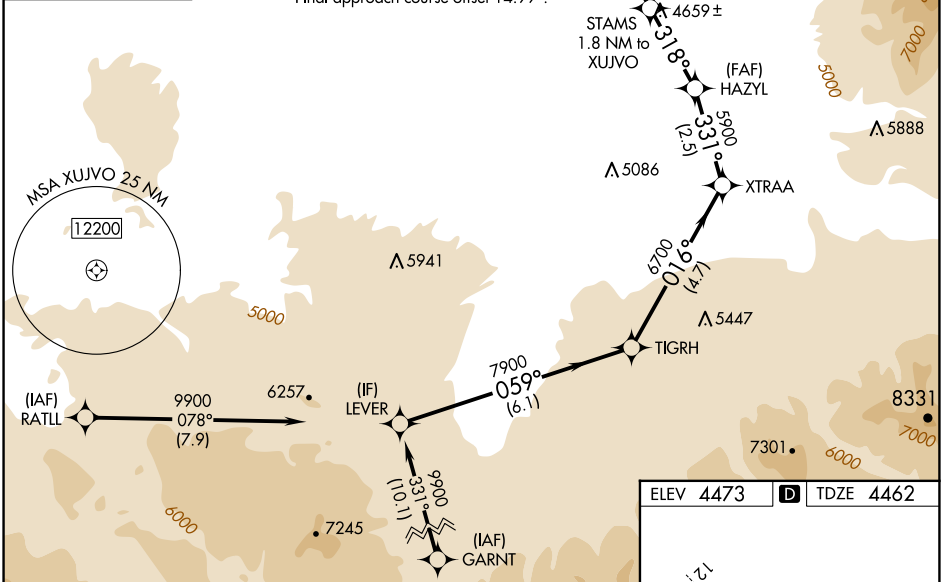
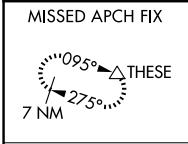
RNP APCH - GPS.

▼ For uncompensated Baro-VNAV systems, LNAV/VNAV NA below -30°C or above 54°C. Circling NA to Rwys 3, 11, 21 and 29.

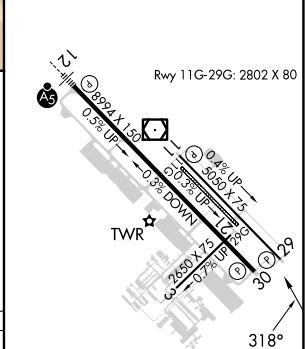
⚠ -22°C

MISSED APPROACH: Climb to 5000 then climbing left turn to 10000 direct THESE and hold, continue climb-in-hold to 10000.

ATIS <b>135.425</b>	BIG SKY APP CON ★ <b>118.975 226.675</b>	BOZEMAN TOWER ★ <b>118.2 (CTAF) 0</b>	GND CON <b>121.8</b>	UNICOM <b>122.95</b>
------------------------	---	--	-------------------------	-------------------------



ELEV 4473	D	TDZE 4462
-----------	---	-----------



CATEGORY	A	B	C	D
LNAV/VNAV	DA	4880-1 1/8	418 (500-1 1/8)	
LNAV MDA	4880-1	418 (500-1)	4880-1 1/8	418 (500-1 1/8)
CIRCLING	4940-1 467 (500-1)	4960-1 487 (500-1)	5160-2 687 (700-2)	5320-2 3/4 847 (900-2 3/4)

REIL Rwy 30 0
HIRL Rwy 12-30 0
MIRL Rwy 11-29 0

NW-1, 20 FEB 2025 to 20 MAR 2025

NW-1, 20 FEB 2025 to 20 MAR 2025