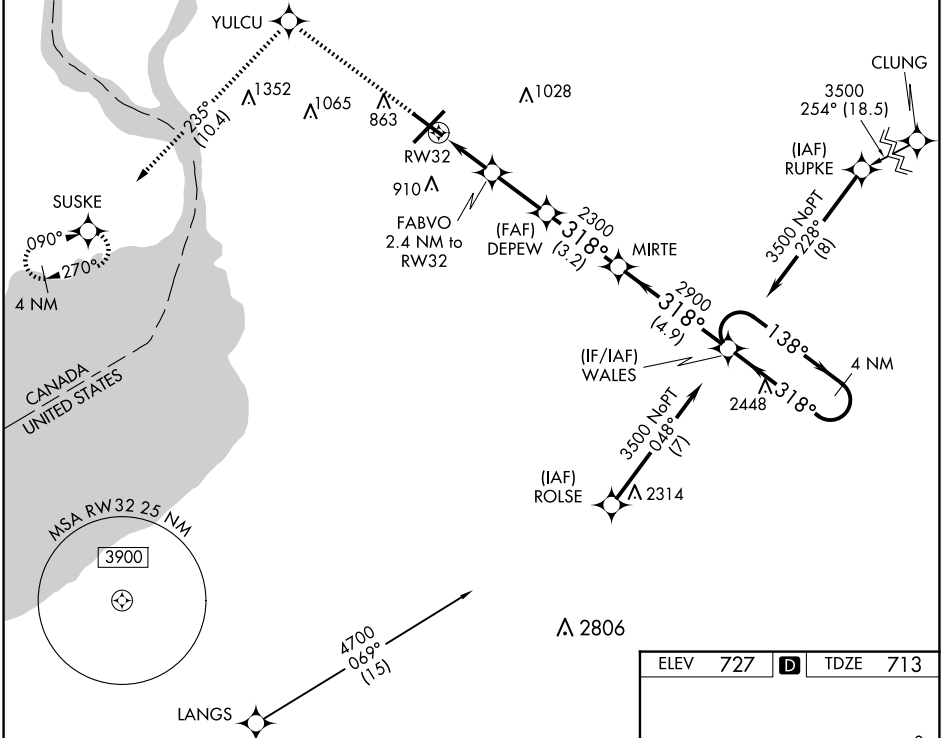


WAAS CH 81811 W32A	APP CRS 318°	Rwy Idg TDZE Apt Elev	6121 713 727
--	------------------------	-----------------------------	---

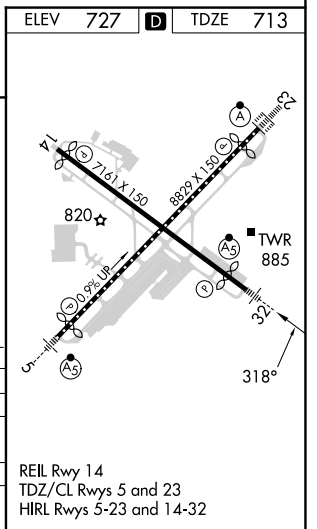
RNAV (GPS) RWY 32

BUFFALO NIAGARA INTL (BUF)

RNP APCH - GPS				MALSR	MISSED APPROACH: Climb to 3000 direct YULCU on track 235° to SUSKE and hold.
For uncompensated Baro-VNAV systems LNAV/VNAV NA below -17°C or above 54°C. For inop ALS, increase LNAV/VNAV visibility all Cats to 1 SM. Inop table does not apply to LPV all Cats.					
D-ATIS 135.35	BUFFALO APP CON 126.15 263.125	BUFFALO TOWER 120.5 257.8	GND CON 133.2 257.8	CLNC DEL 124.7 257.8	CPDLC



3000	YULCU	tr 235°	SUSKE	4 NM Holding Pattern
* LNAV only.				
FABVO 2.4 NM to RW32 DEPEW 2300 MIRTE 2900 WALES 3500 GP 3.00° TCH 54				
*1.2 NM to RW32 *1520 2300 1.2 NM 1.2 NM 2.4 NM 3.2 NM 4.9 NM				
CATEGORY	A		B	
LPV DA	913-½		200 (200-½)	
LNAV/VNAV DA	1092-⅝		379 (400-⅝)	
LNAV MDA	1140-½ 427 (500-½)		1140-¾ 427 (500-¾)	
CIRCLING	1200-1 473 (500-1)		1220-1½ 493 (500-1½) 1340-2 613 (700-2)	



NE-2, 20 FEB 2025 to 20 MAR 2025

NE-2, 20 FEB 2025 to 20 MAR 2025