

RNAV 1 - DME/DME/IRU or GPS.

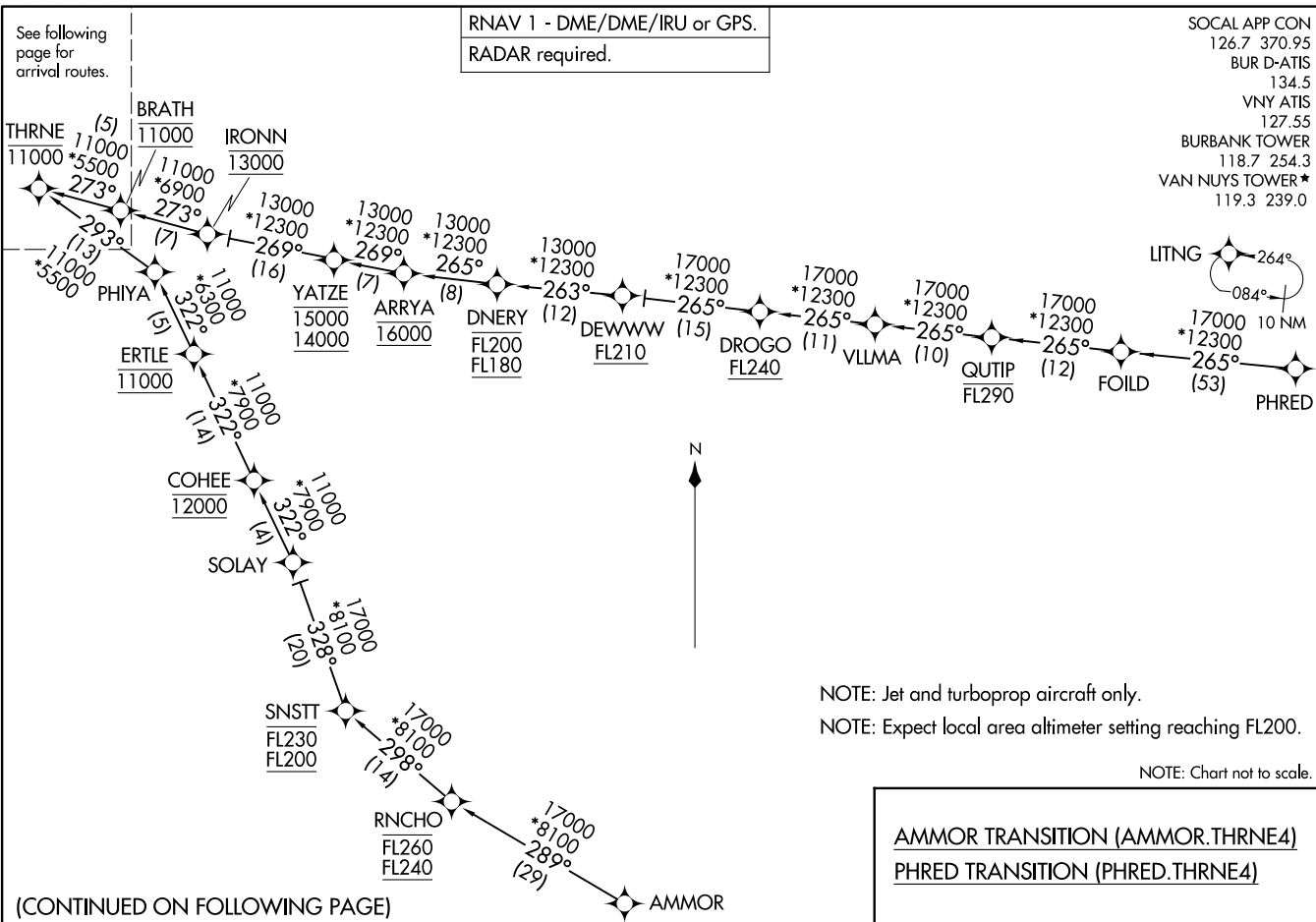
RADAR required.

SOCAL APP CON
 126.7 370.95
 BUR D-ATIS
 134.5
 VNY ATIS
 127.55
 BURBANK TOWER
 118.7 254.3
 VAN NUYS TOWER *
 119.3 239.0

(THRNE:THRNE4) 20FEB25

THRNE FOUR ARRIVAL (RNAV) Transition Routes

BURBANK, CALIFORNIA



(CONTINUED ON FOLLOWING PAGE)

(THRNE:THRNE4) 25051
THRNE FOUR ARRIVAL (RNAV) Transition Routes
Al-67 (FAA) BURBANK, CALIFORNIA

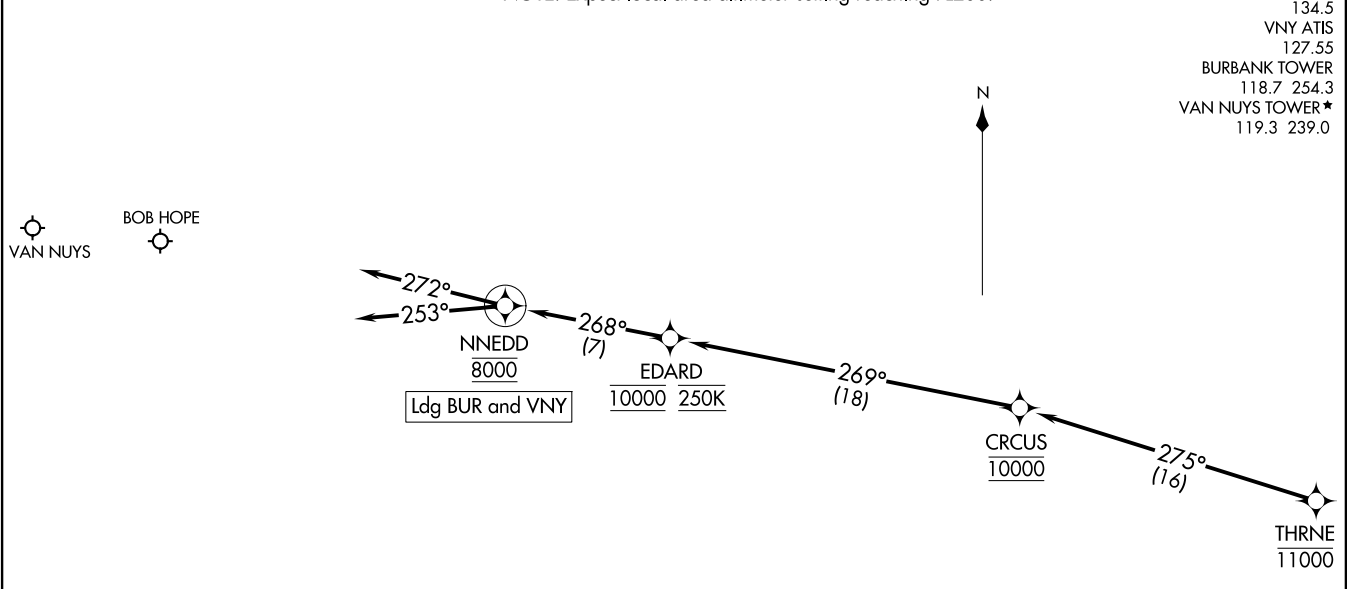
THRNE FOUR ARRIVAL (RNAV) Arrival Routes
(THRNE: THRNE4) 20FEB25

(THRNE: THRNE4) 25051
THRNE FOUR ARRIVAL (RNAV) Arrival Routes
A1-67 (FAA) BURBANK, CALIFORNIA

RNAV 1 - DME/DME/IRU or GPS.
RADAR required.

NOTE: Jet and turboprop aircraft only.
NOTE: Expect local area altimeter setting reaching FL200.

SOCAL APP CON 126.7 370.95
BUR D-ATIS 134.5
VNY ATIS 127.55
BURBANK TOWER 118.7 254.3
VAN NUYS TOWER ★ 119.3 239.0



ARRIVAL ROUTE DESCRIPTION

LANDING BUR: From THRNE on track 275° to cross CRCUS at 10000, then on track 269° to cross EDARD at 10000 and at 250K, then on track 268° to cross NNEDD at 8000, then on track 253° . Expect RADAR vectors to final approach course.

LANDING VNY: From THRNE on track 275° to cross CRCUS at 10000, then on track 269° to cross EDARD at 10000 and at 250K, then on track 268° to cross NNEDD at 8000, then on track 272° . Expect RADAR vectors to final approach course.

NOTE: Chart not to scale.

BURBANK, CALIFORNIA