

VOR/DME BYI <b>114.1</b> Chan <b>88</b>	APP CRS <b>100°</b>	Rwy Idg TDZE Apt Elev <b>4154</b>	<b>N/A</b> <b>N/A</b> <b>4154</b>
---	------------------------	---	---

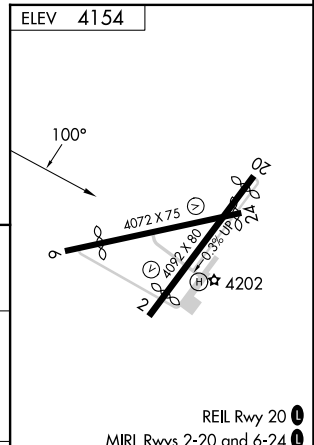
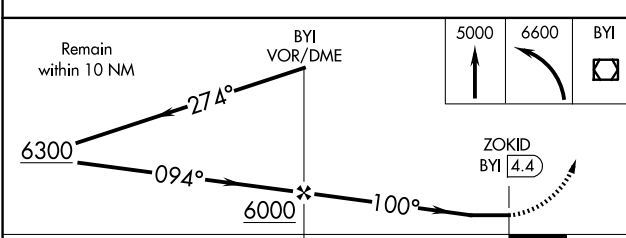
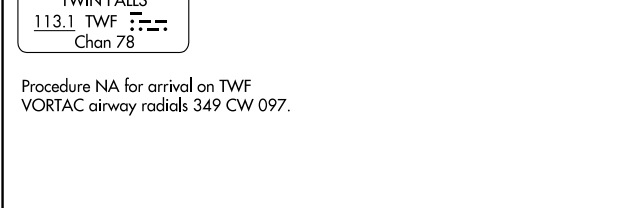
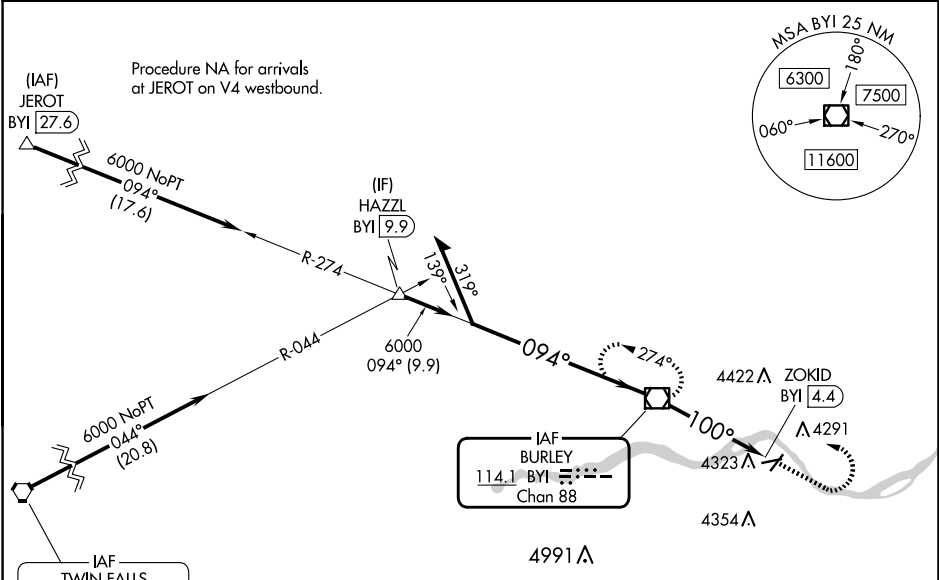
# VOR-A

BURLEY MUNI (BYI)

**⚠** Circling Rwy 2, 24 NA at night. Rwy 2, 20, 24 helicopter visibility reduction below 1 SM NA. When local altimeter setting not received, use TWF altimeter setting and increase all MDAs 80 feet and visibility Cats C and D ¼ SM. When Circling Rwy 20, exhaust stacks located along Rwy 20 extended final approach course approximately 2345 feet from approach end.

**MISSED APPROACH:** Climb to 5000 then climbing left turn to 6600 direct BYI VOR/DME and hold, continue climb-in-hold to 6600.

ASOS <b>135.575</b>	TWIN FALLS APP CON * <b>126.7 353.75</b>	CTAF <b>122.90</b>
------------------------	---	-----------------------



CATEGORY	FAF to MAP 4.4 NM					
	A	B	C	D		
CIRCLING	4640-1 486 (500-1)	4660-1 506 (600-1)	4740-1½ 586 (600-1½)	4780-2 626 (700-2)		
	Knots	60	90	120	150	180
	Min:Sec	4:24	2:56	2:12	1:46	1:28

NW-1, 20 FEB 2025 to 20 MAR 2025

NW-1, 20 FEB 2025 to 20 MAR 2025