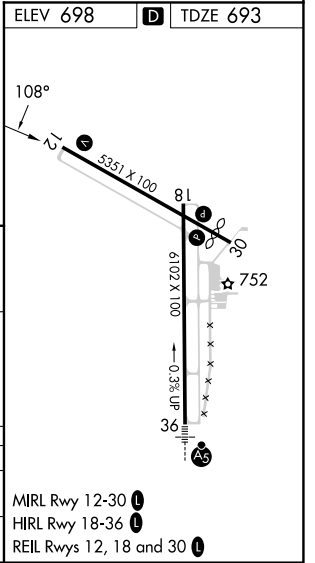
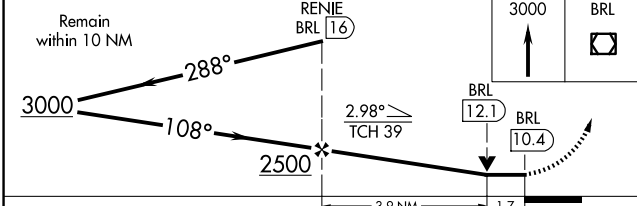
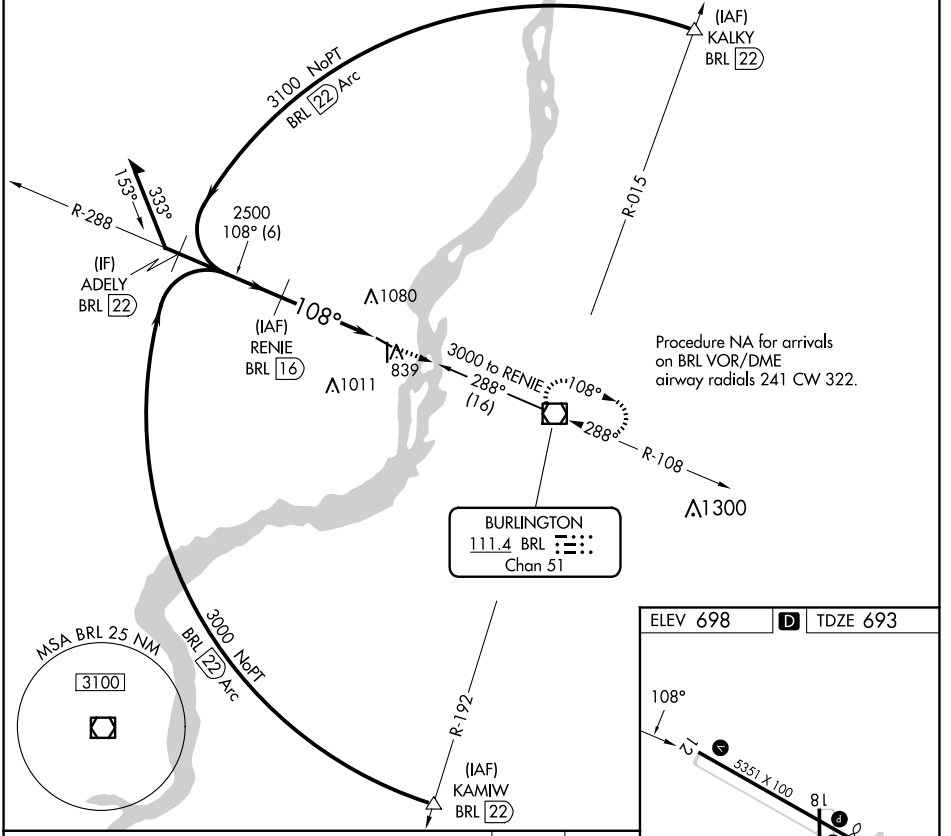


VOR/DME BRL 111.4 Chan 51	APP CRS 108°	Rwy Idg TDZE Apt Elev	5350 693 698
--	------------------------	-----------------------------	---

VOR RWY 12
SOUTHEAST IOWA RGNL (B.R.L.)

DME required.		MISSED APPROACH: Climb to 3000 direct BRL VOR/DME and hold.
---------------	--	---

ASOS 118.025	CHICAGO CENTER 135.6 370.95	UNICOM 123.0 (CTAF) 0
------------------------	---------------------------------------	---------------------------------



CATEGORY	A	B	C	D
S-12	1280-1	587 (600-1)	1280-1 $\frac{3}{4}$ 587 (600-1 $\frac{3}{4}$)	NA
C CIRCLING	1280-1	582 (600-1)	1380-2 682 (700-2)	NA

NC-3, 20 FEB 2025 to 20 MAR 2025

NC-3, 20 FEB 2025 to 20 MAR 2025

- MIRL Rwy 12-30 **L**
- HIRL Rwy 18-36 **L**
- REIL Rws 12, 18 and 30 **L**