

ALCOS SIX DEPARTURE

AL-72 (FAA)

CASPER/NATRONA COUNTY INTL (CPR)
CASPER, WYOMING

ATIS
126.15
CLNC DEL
121.9 257.8
GND CON
121.9
CASPER TOWER ★
118.3 (CTAF) 257.8
CASPER DEP CON ★
120.65 354.1
DENVER CENTER
135.6 363.025

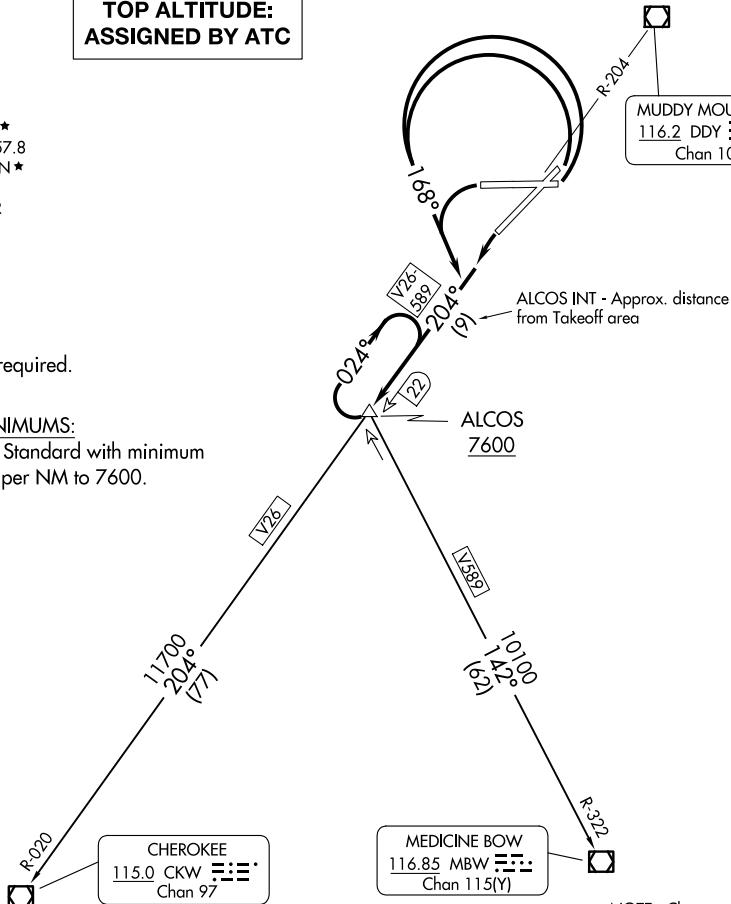
**TOP ALTITUDE:
ASSIGNED BY ATC**

MUDDY MOUNTAIN
116.2 DDY Chan 109

NOTE: DME required.

TAKEOFF MINIMUMS:

All Runways: Standard with minimum climb of 300' per NM to 7600.



NOTE: Chart not to scale.

DEPARTURE ROUTE DESCRIPTION

TAKEOFF RUNWAYS 3, 8, 26: Turn left heading 168°, thence. . .

TAKEOFF RUNWAY 21: Turn left, thence. . .

. . . climb on DDY VOR/DME R-204 to cross ALCOS INT 22 DME at or above 7600, climb-in-hold to MEA for direction of flight, then via (transition) or (assigned route).

CHEROKEE TRANSITION (ALCOS6.CKW): From over ALCOS on DDY R-204 and CKW R-020 to CKW VOR/DME.

MEDICINE BOW TRANSITION (ALCOS6.MBW): From over ALCOS on MBW R-322 to MBW VOR/DME.

ALCOS SIX DEPARTURE

(ALCOS6.ALCOS) 21JUL16

CASPER, WYOMING
CASPER/NATRONA COUNTY INTL (CPR)

NW-1, 20 FEB 2025 to 20 MAR 2025

NW-1, 20 FEB 2025 to 20 MAR 2025