

LOC I-SYD 111.3	APP CRS 032°	Rwy ldg 10165
		TDZE 5328
		Apt Elev 5344

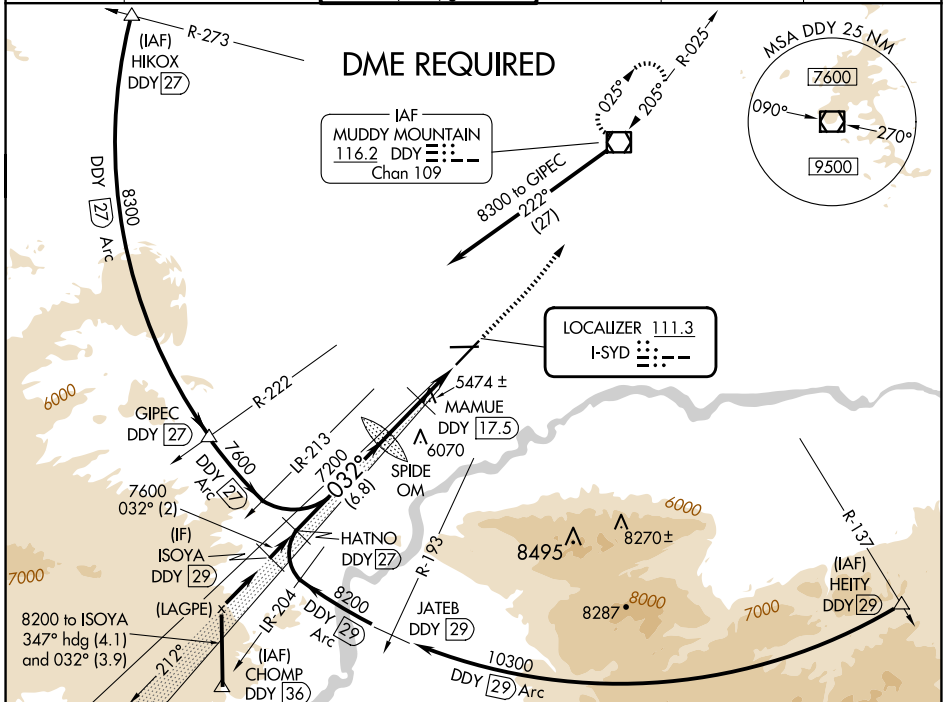
ILS or LOC RWY 3

CASPER/NATRONA COUNTY INTL (CPR)

▽ DME from DDY VOR/DME. Simultaneous reception of I-SYD and DDY DME required. When local altimeter setting not received, use Douglas altimeter setting and increase DA to 5697 feet and all MDAs 180 feet, increase S-ILS visibility all Cats ¼ SM and S-LOC visibility Cat B, C, D and Circling Cats B, C, D visibility ½ SM, increase MAMUE FIX MINIMUM Circling visibility Cat C ½ SM and Cat D ¼ SM. For inoperative MALSR when using Douglas altimeter setting increase S-ILS visibility all Cats to ½ mile. MAMUE FIX MINIMUMS: For inoperative MALSR, increase S-LOC visibility Cats C, and D to 1½ mile. #RVR 1800 authorized with use of FD or AP or HUD to DA.

MALSR MISSED APPROACH: Climb to 7500 then left turn direct DDY VOR/DME and hold.

ATIS 126.15	CASPER APP CON * 120.65 354.1	CASPER TOWER * 118.3 (CTAF) 257.8	GND CON 121.9	CLNC DEL 121.9 257.8	UNICOM 122.95
-----------------------	---	---	-------------------------	--------------------------------	-------------------------



ISOYA DDY 29	*6400 when using Douglas altimeter setting.	HATNO DDY 27	SPIDE OM	MAMUE DDY 17.5	7500	DDY	ELEV 5344	TDZE 5328
8200	032°	7600	7200	*6220	DDY 14.7	*LOC only		
GS 3.00° TCH 50								
	2 NM	6.8 NM	2.9 NM	2.7 NM				
CATEGORY	A	B	C	D				
S-ILS 3	# 5528/24 200 (200-½)							
S-LOC 3	6220/40	892 (900-¾)	6220-2	892 (900-2)				
CIRCLING	6220-1¼	876 (900-1¼)	6220-2½	876 (900-2½)	6220-2¾	876 (900-2¾)		
MAMUE FIX MINIMUMS								
S-LOC 3	5740/24	412 (400-½)	5740/40	412 (400-¾)				
CIRCLING	5740-1	5800-1	5860-1½	6200-2¾				
	396 (400-1)	456 (500-1)	516 (600-1½)	856 (900-2¾)				
							REIL Rwy 21	
							HIRL Rws 3-21 and 8-26	
							FAF to MAP 5.6 NM	
							Knots	60 90 120 150 180
							Min:Sec	5:36 3:44 2:48 2:14 1:52

NW-1, 20 FEB 2025 to 20 MAR 2025

NW-1, 20 FEB 2025 to 20 MAR 2025