

WAAS CH 78112 W26A	APP CRS 257°	Rwy Idg TDZE 5335 Apt Elev 5344	8679
--	------------------------	---	-------------

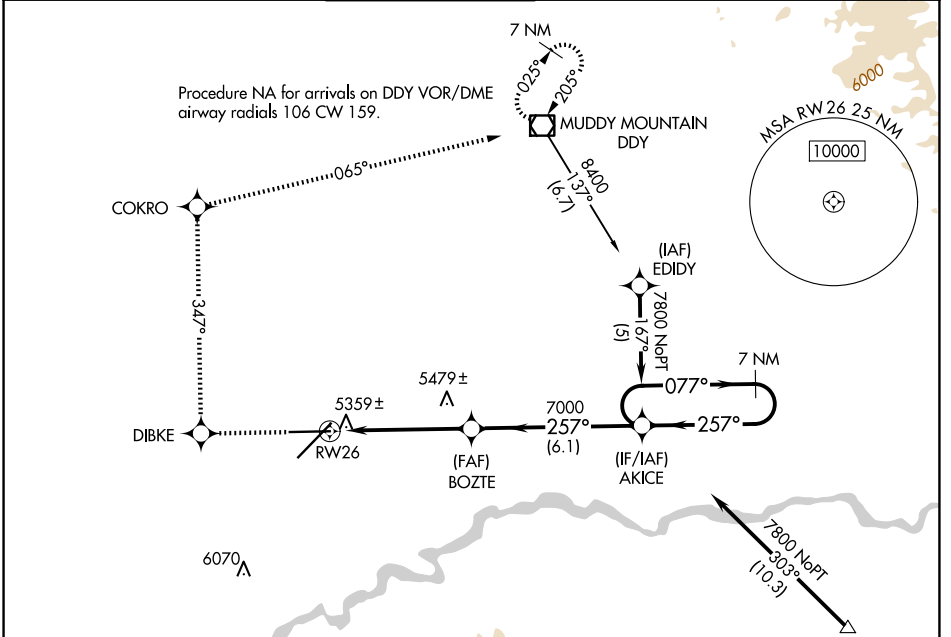
RNAV (GPS) RWY 26

CASPER/NATRONA COUNTY INTL (C'PR)

⚠ For uncompensated Baro-VNAV systems, LNAV/VNAV NA below -25°C (-13°F) or above 38°C (100°F).
⚠ DME/DME RNP-0.3 NA.

MISSED APPROACH: Climb to 8400 direct DIBKE and right turn via track 347° to COKRO and via track 065° to DDY VOR/DME and hold.

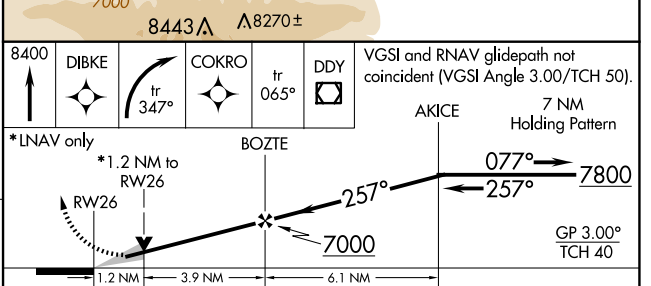
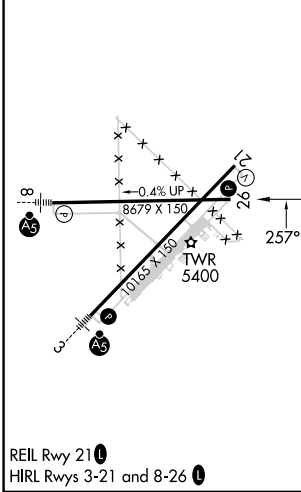
ATIS 126.15	CASPER APP CON * 120.65 354.1	CASPER TOWER * 118.3 (CTAF) 0 257.8	GND CON 121.9	CLNC DEL 121.9 257.8	UNICOM 122.95
-----------------------	---	---	-------------------------	--------------------------------	-------------------------



NW-1, 20 FEB 2025 to 20 MAR 2025

NW-1, 20 FEB 2025 to 20 MAR 2025

ELEV 5344	D	TDZE 5335
-----------	----------	-----------



CATEGORY	A	B	C	D
LPV DA		5585-1	250 (300-1)	
LNAV/VNAV DA		5629-1	294 (300-1)	
LNAV MDA	5740-1	405 (400-1)	5740-1¼	405 (400-1¼)
CIRCLING	5780-1 436 (500-1)	5800-1 456 (500-1)	5860-1½ 516 (600-1½)	6200-2¾ 856 (900-2¾)