

| | | | |
|-------------|---------|----------|-------|
| VOR/DME DDY | APP CRS | Rwy Idg | 10165 |
| 116.2 | 203° | TDZE | 5330 |
| Chan 109 | | Apt Elev | 5344 |

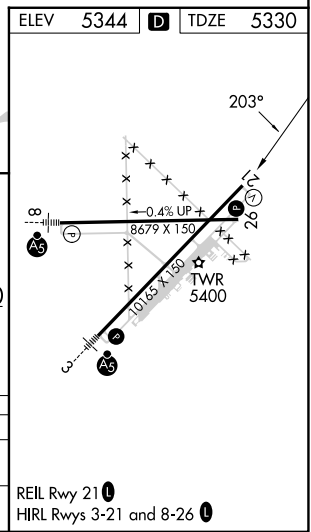
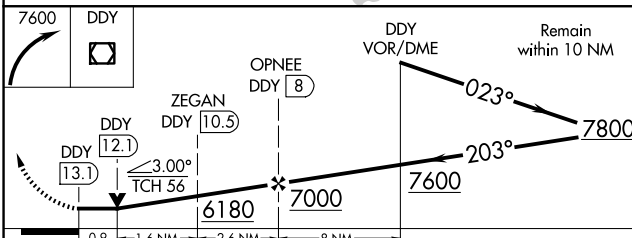
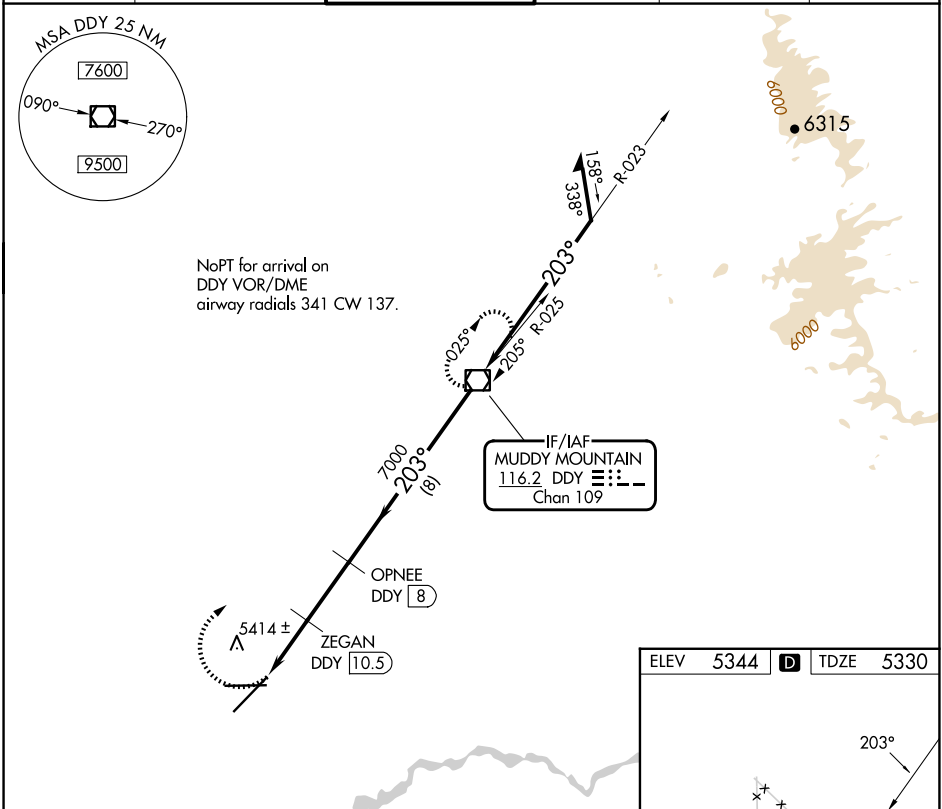
VOR/DME RWY 21

CASPER/NATRONA COUNTY INTL (CPR)

V VDP NA with Douglas altimeter setting. When local altimeter setting not received, use Douglas altimeter setting and increase all MDAs 180 feet, increase S-21 visibility Cats C/D ½ SM, Circling Cat C ½ SM and Cat D ¼ SM.

MISSED APPROACH: Climbing right turn to 7600 direct DDY VOR/DME and hold.

| | | | | | |
|--------|------------------|----------------------|---------|-------------|--------|
| ATIS | CASPER APP CON * | CASPER TOWER * | GND CON | CLNC DEL | UNICOM |
| 126.15 | 120.65 354.1 | 118.3 (CTAF) 0 257.8 | 121.9 | 121.9 257.8 | 122.95 |



| | | | | |
|----------|-----------------------|-----------------------|-------------------------|-------------------------|
| CATEGORY | A | B | C | D |
| S-21 | 5680-1 350 (400-1) | | | |
| CIRCLING | 5740-1 396 (400-1) | 5800-1 456 (500-1) | 5860-1½ 516 (600-1½) | 6200-2¾ 856 (900-2¾) |

NW-1, 20 FEB 2025 to 20 MAR 2025

NW-1, 20 FEB 2025 to 20 MAR 2025