

PLMTO THREE DEPARTURE (RNAV)

TOP ALTITUDE:
4000

NOTE: Chart not to scale.

DEPARTURE ROUTE DESCRIPTION

TAKEOFF RUNWAY 3: Climb on heading 031° to 560, then right turn direct LOIRN, then on depicted route to PLMTO, thence. . . .

TAKEOFF RUNWAY 15: Climb on heading 154° to 560, then left turn direct JAYLN, then on depicted route to PLMTO, thence. . . .

TAKEOFF RUNWAY 21: Climb on heading 211° to 560, then left turn direct JAYLN, then on depicted route to PLMTO, thence. . . .

TAKEOFF RUNWAY 33: Climb on heading 334° to 560, then right turn direct LOIRN, then on depicted route to PLMTO, thence. . . .

. . . on assigned transition/route. Maintain 4000. Expect clearance to filed altitude within ten minutes after departure.

GRAND STRAND TRANSITION (PLMTO3.CRE):

SE-2, 20 FEB 2025 to 20 MAR 2025

- D-ATIS 124.75
- CINC DEL 127.325 291.65
- CPDIC
- GND CON 121.9 348.6
- CHARLESTON TOWER 126.0 239.0
- CHARLESTON DEP CON 121.275 379.925

- NOTE: If unable to accept climb rate, advise ATC on initial contact.
- NOTE: RNAV 1.
- NOTE: DME/DME/IRU or GPS required.
- NOTE: RADAR required for non-GPS equipped aircraft.

GRAND STRAND CRE

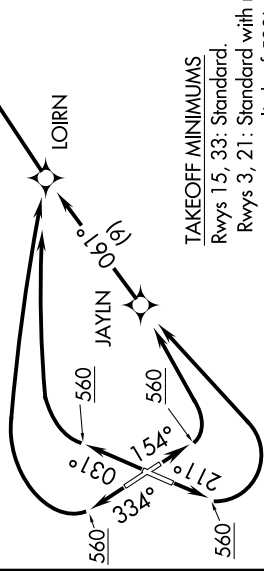
5000
121.00
0.48°
(49)

PLMTO

N

LOIRN

JAYLN



TAKEOFF MINIMUMS
Rwys 15, 33: Standard.
Rwys 3, 21: Standard with minimum
climb of 500' per NM to 560.

PLMTO THREE DEPARTURE (RNAV)

SE-2, 20 FEB 2025 to 20 MAR 2025