

RNAV 1 - DME/DME/IRU OR GPS.
RADAR required.

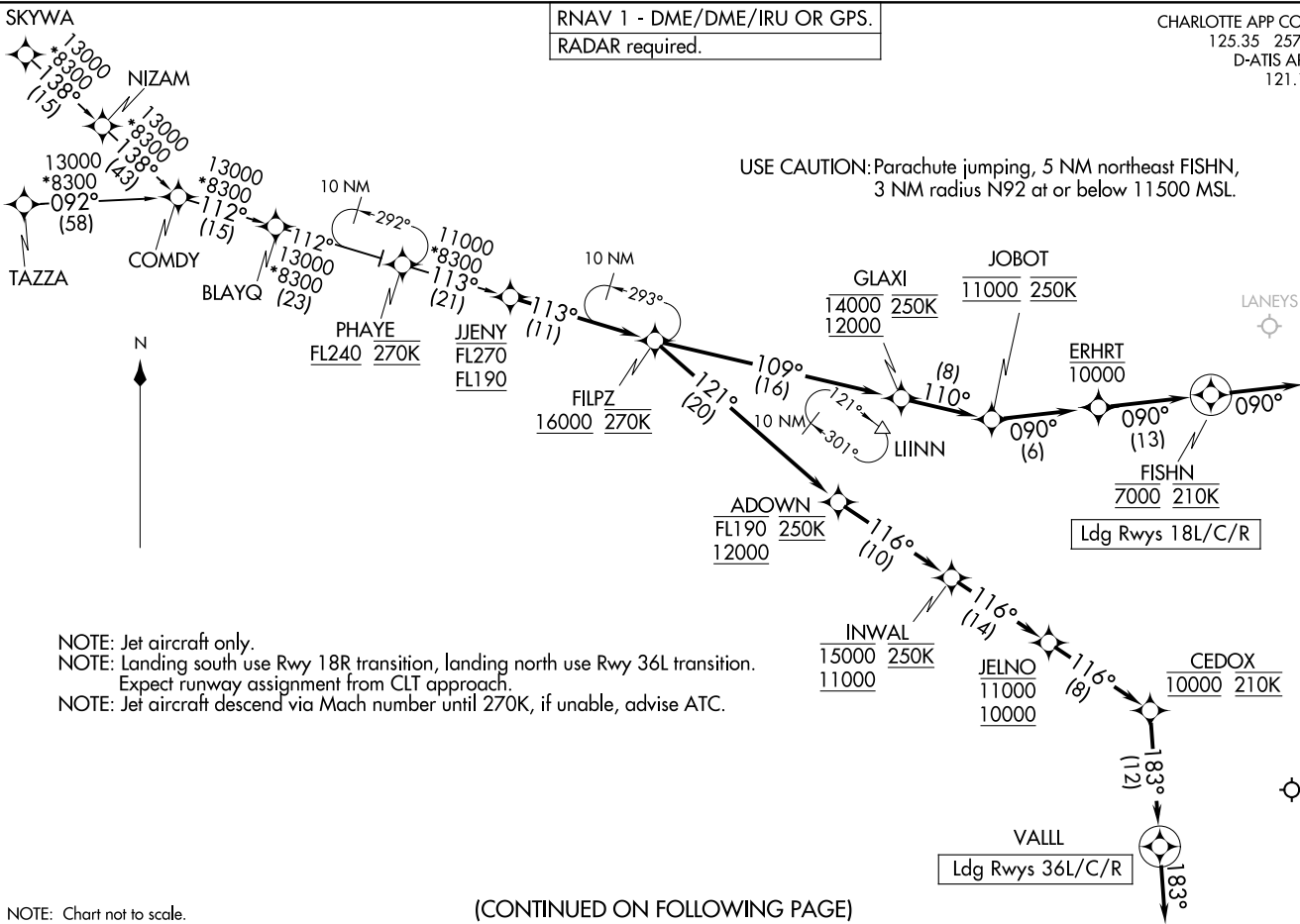
CHARLOTTE APP CON
125.35 257.2
D-ATIS ARR
121.15

FILPZ FOUR ARRIVAL (RNAV)
(JENY.FILPZ4) 16MAA74

(JENY.FILPZ4) 24137
FILPZ FOUR ARRIVAL (RNAV)

AL-78 (FAA)

CHARLOTTE/DOUGLAS INTL (CLT)
CHARLOTTE, NORTH CAROLINA



NOTE: Jet aircraft only.
 NOTE: Landing south use Rwy 18R transition, landing north use Rwy 36L transition.
 Expect runway assignment from CLT approach.
 NOTE: Jet aircraft descend via Mach number until 270K, if unable, advise ATC.

NOTE: Chart not to scale.

(CONTINUED ON FOLLOWING PAGE)

FILPZ FOUR ARRIVAL (RNAV)

ARRIVAL ROUTE DESCRIPTION

COMDY TRANSITION (COMDY.FILPZ4)

SKYWA TRANSITION (SKYWA.FILPZ4)

TAZZA TRANSITION (TAZZA.FILPZ4)

From JJENY on track 113° to cross FILPZ at or above 16000 and at 270K.

LANDING RUNWAYS 18L/C/R: From FILPZ on track 109° to cross GLAXI between 12000 and 14000 and at 250K, then on track 110° to cross JOBOT at 11000 and at 250K, then on track 090° to cross ERHRT at or below 10000, then on track 090° to cross FISHN at 7000 and at 210K, then on track 090°. Expect RADAR vectors to final approach course.

LANDING RUNWAYS 36L/C/R: From FILPZ on track 121° to cross ADOWN between 12000 and FL190 and at 250K, then on track 116° to cross INWAL between 11000 and 15000 and at 250K, then on track 116° to cross JELNO between 10000 and 11000, then on track 116° to cross CEDOX at 10000 and at 210K, then on track 183° to VALLL, then on track 183°. Expect RADAR vectors to final approach course.

SE-2, 20 FEB 2025 to 20 MAR 2025

SE-2, 20 FEB 2025 to 20 MAR 2025