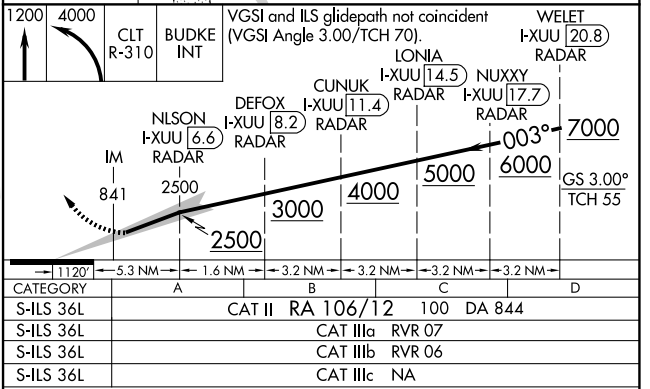
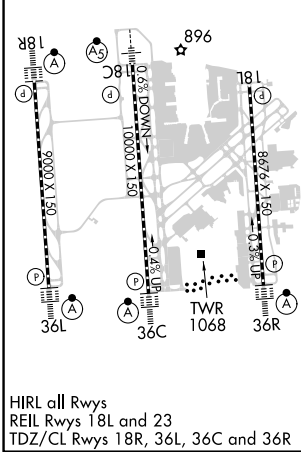
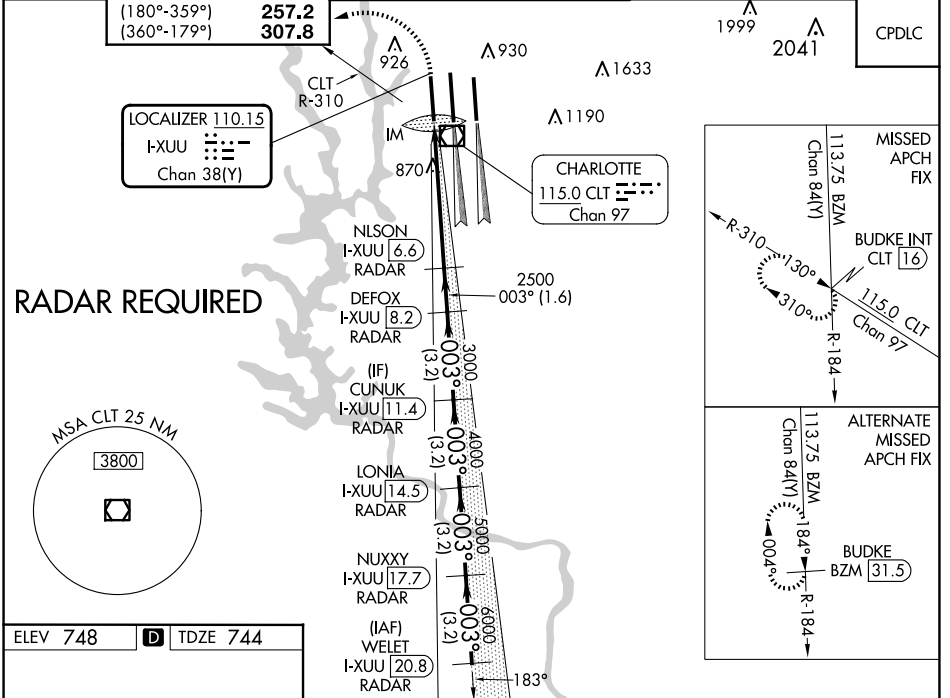


| | | | |
|---|------------------------|---|-------------|
| LOC/DME I-XUU 110.15 Chan 38(Y) | APP CRS 003° | Rwy Idg TDZE 744 Apt Elev 748 | 9000 |
|---|------------------------|---|-------------|

ILS RWY 36L (CAT II & III)

CHARLOTTE/DOUGLAS INTL (CLT)

| | | | | |
|---|--|---|---|--|
| D-ATIS ARR 121.15 DEP 132.1 | CHARLOTTE APP CON (001°-119°) 128.32 (120°-295°) 120.05 (296°-360°) 134.75 (180°-359°) 257.2 (360°-179°) 307.8 | CHARLOTTE TOWER (Rwys 18L-36R) 118.1 257.8 (Rwy 18C-36C) 126.4 257.8 (Rwy 18R-36L) 133.35 257.8 | GND CON 121.8 348.6 (WEST) 121.9 348.6 (EAST) | CLNC DEL 127.15 348.6 |
| | <p>Simultaneous approach authorized. DME or RADAR required.</p> | | <p>ALSF-2</p> | <p>MISSED APPROACH: Climb to 1200 then climbing left turn to 4000 on CLT VOR/DME R-310 to BUDKE INT/CLT 16 DME and hold.</p> |



CATEGORY II & III ILS SPECIAL AIRCREW & AIRCRAFT CERTIFICATION REQUIRED

SE-2, 20 FEB 2025 to 20 MAR 2025

SE-2, 20 FEB 2025 to 20 MAR 2025