

LOC/DME I-VKQ <b>110.35</b> Chan 40(Y)	APP CRS <b>183°</b>	Rwy Idg 8676	TDZE 748	Apt Elev 748
--	------------------------	-----------------	-------------	-----------------

# ILS or LOC RWY 18L

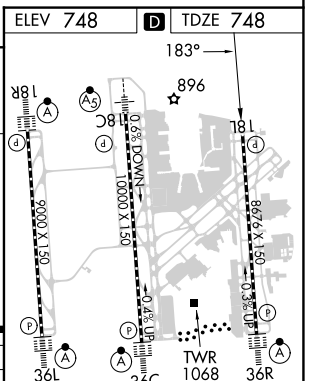
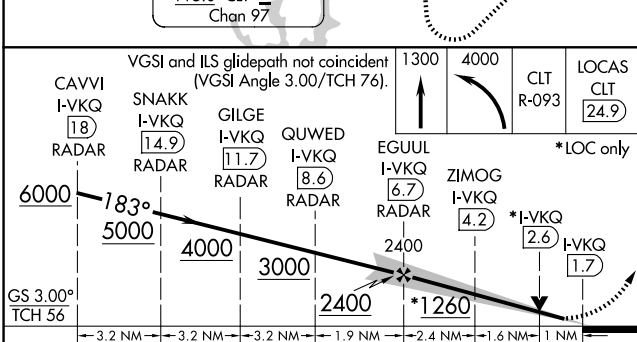
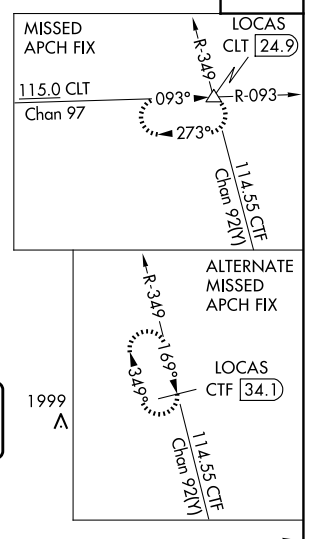
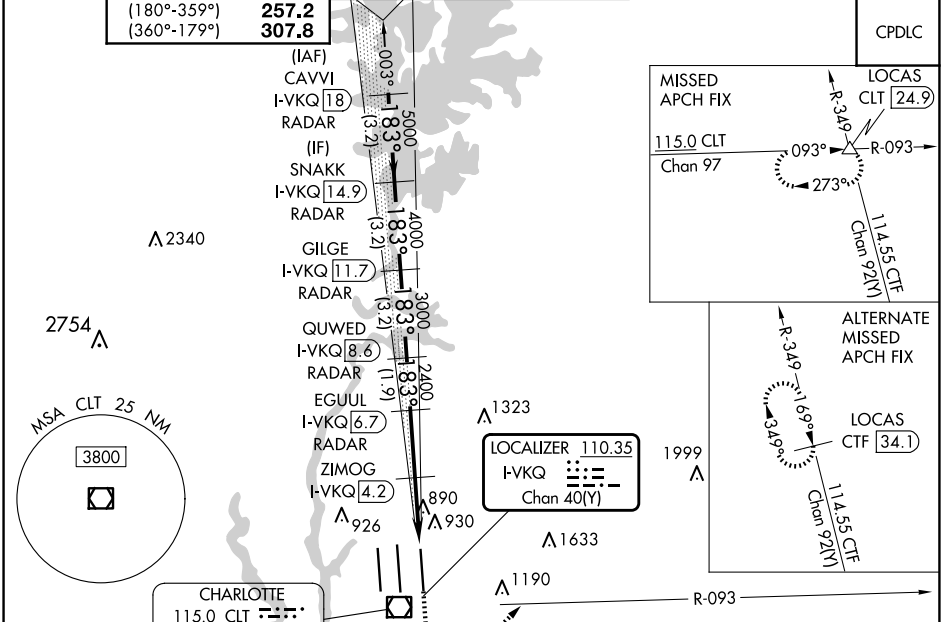
CHARLOTTE/DOUGLAS INTL (CLT)

RADAR required for procedure entry. DME or RADAR required.

Simultaneous approach authorized.  
Rwy 18L helicopter visibility reduction below RVR 4000 NA.

MISSED APPROACH: Climb to 1300 then climbing left turn to 4000 on CLT VOR/DME R-093 to LOCAS INT/CLT 24.9 DME and hold.

D-ATIS ARR <b>121.15</b> DEP <b>132.1</b>	CHARLOTTE APP CON (001°-119°) <b>128.32</b> (120°-295°) <b>120.05</b> (296°-360°) <b>134.75</b> (180°-359°) <b>257.2</b> (360°-179°) <b>307.8</b>	CHARLOTTE TOWER (Rwys 18L-36R) <b>118.1 257.8</b> (Rwy 18C-36C) <b>126.4 257.8</b> (Rwy 18R-36L) <b>133.35 257.8</b>	GND CON <b>121.8 348.6</b> (WEST) <b>121.9 348.6</b> (EAST)	CLNC DEL <b>127.15</b> <b>348.6</b>
---	--	---	---	---



CATEGORY	A	B	C	D
S-ILS 18L	1002/40 254 (300-¾)			
S-LOC 18L	1260/55 512 (600-1)	1260-1⅓ 512 (600-1⅓)		
ZIMOG FIX MINIMUMS (DME REQUIRED)				
S-LOC 18L	1140/55 392 (400-1)	1140/60 392 (400-1¼)		

FAF to MAP 5 NM					
Knots	60	90	120	150	180
Min:Sec	5:00	3:20	2:30	2:00	1:40

SE-2, 20 FEB 2025 to 20 MAR 2025

SE-2, 20 FEB 2025 to 20 MAR 2025