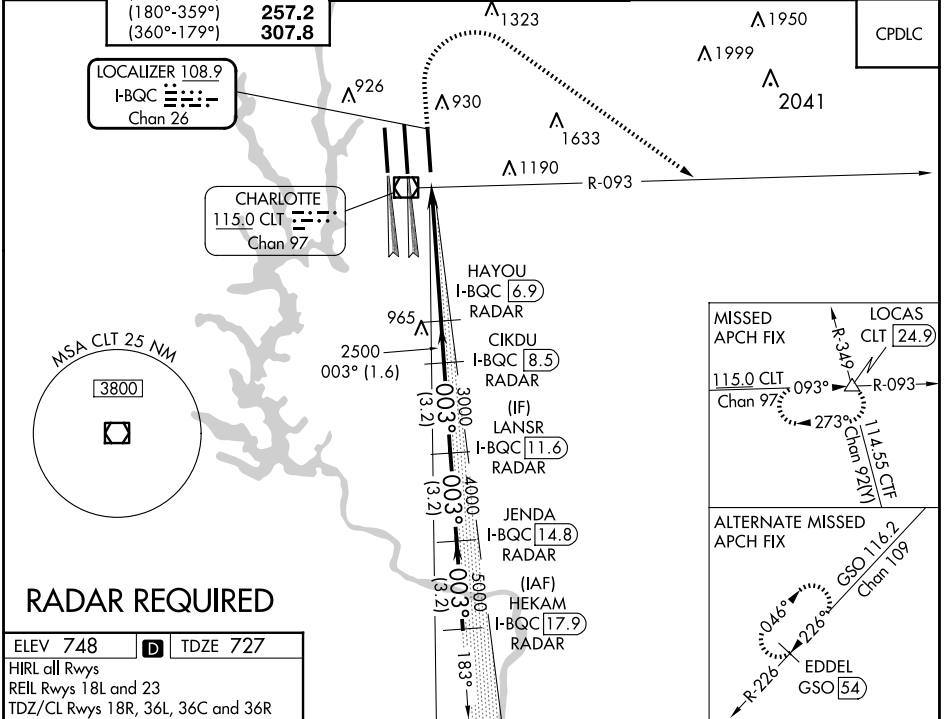


LOC/DME I-BQC <b>108.9</b> Chan 26	APP CRS <b>003°</b>	Rwy Idg TDZE Apt Elev	<b>8390</b> <b>727</b> <b>748</b>
--	------------------------	-----------------------------	---

# ILS or LOC RWY 36R

CHARLOTTE/DOUGLAS INTL (CLT)

<p><b>⚠</b> Circling NA at night. Simultaneous approach authorized. DME or RADAR required.</p>	<p>ALS-F-2</p>	<p>MISSED APPROACH: Climb to 1320 then climbing right turn to 4000 on CLT VOR/DME R-093 to LOCAS INT/24.9 DME and hold.</p>	
	<p>D-ATIS ARR <b>121.15</b> DEP <b>132.1</b></p>	<p>CHARLOTTE APP CON (001°-119°) <b>128.32</b> (120°-295°) <b>120.05</b> (296°-360°) <b>134.75</b> (180°-359°) <b>257.2</b> (360°-179°) <b>307.8</b></p>	<p>CHARLOTTE TOWER (Rwys 18L-36R) <b>118.1 257.8</b> (Rwy 18C-36C) <b>126.4 257.8</b> (Rwy 18R-36L) <b>133.35 257.8</b></p>



ELEV 748	<b>D</b>	TDZE 727			
HIRL all Rwys					
REIL Rwys 18L and 23					
TDZ/CL Rwys 18R, 36L, 36C and 36R					
FAF to MAP 5.4 NM					
Knots	60	90	120	150	180
Min:Sec	5:24	3:36	2:42	2:10	1:48

1320	4000	CLT R-093	LOCAS CLT [24.9]	VGSJ and ILS glidepath not coincident (VGSJ Angle 3.00/TCH 74).
* LOC only.				
HEKAM I-BQC [17.9] RADAR	JENDA I-BQC [14.8] RADAR	LANSR I-BQC [11.6] RADAR	CIKDU I-BQC [8.5] RADAR	HAYOU I-BQC [6.9] RADAR
1 NM	4.4 NM	1.6 NM	3.2 NM	3.2 NM
GS 3.00° TCH 55				
CATEGORY	A	B	C	D
S-ILS 36R	927/18 200 (200-½)			
S-LOC 36R	1120/24 393 (400-½)	1120/35 393 (400-¾)		
<b>C</b> CIRCLING	1380-1 632 (700-1)	1500-2¼ 752 (800-2¼)		1500-2½ 752 (800-2½)

SE-2, 20 FEB 2025 to 20 MAR 2025

SE-2, 20 FEB 2025 to 20 MAR 2025