

KNIGHTS THREE DEPARTURE

**TOP ALTITUDE:
4000**

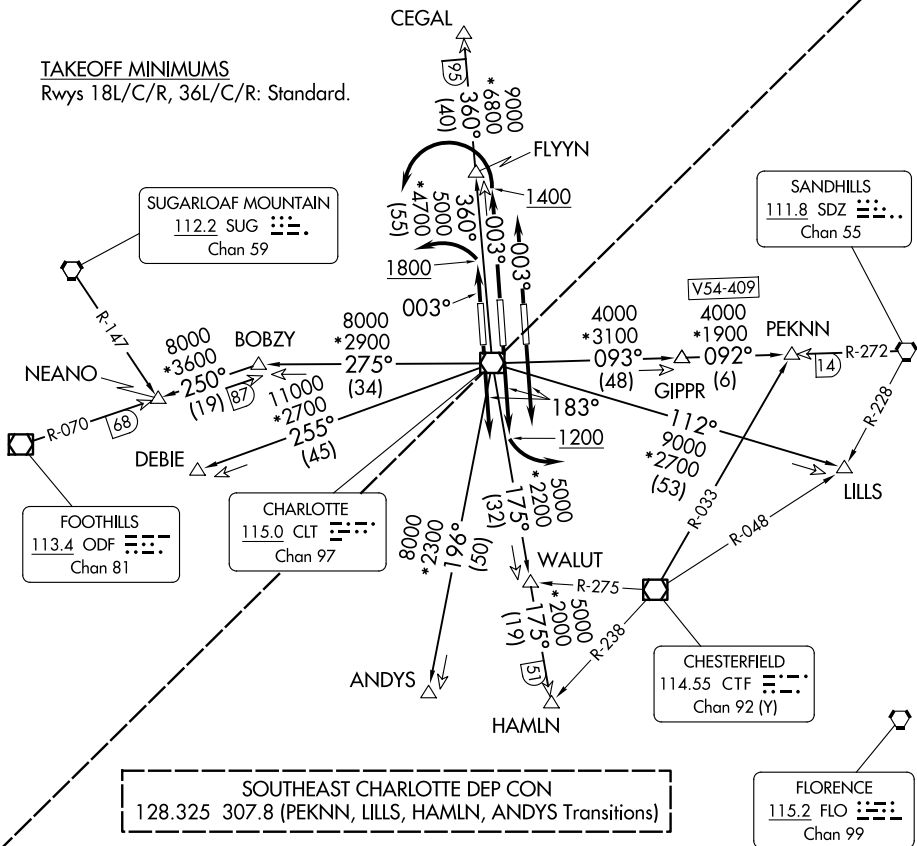
RADAR and DME required.

D-ATIS DEP
132.1
CLNC DEL
127.15 348.6
CPDLC
GND CON
121.8 348.6 (WEST)
121.9 348.6 (EAST)
CHARLOTTE TOWER
118.1 257.8 (Rwy 18L-36R)
126.4 257.8 (Rwy 18C-36C)
133.35 257.8 (Rwy 18R-36L)

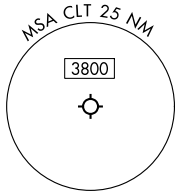
NORTHWEST CHARLOTTE DEP CON
120.05 257.2 (DEBIE, NEANO Transitions)
120.05 257.2 (FLYYN, CEGAL Transitions Rwys 18L/C/R)
120.5 257.2 (FLYYN, CEGAL Transitions Rwys 36L/C/R)

TAKEOFF MINIMUMS

Rwys 18L/C/R, 36L/C/R: Standard.



SOUTHEAST CHARLOTTE DEP CON
128.325 307.8 (PEKNN, LILLS, HAMLN, ANDYS Transitions)



NOTE: For propeller aircraft only.
NOTE: Turboprops: Operate in a manner that will result in best forward speed and climb rate.
NOTE: Transponder code will be issued via PDC or Charlotte clearance delivery.

(CONTINUED ON FOLLOWING PAGE)

NOTE: Chart not to scale.

KNIGHTS THREE DEPARTURE

SE-2, 20 FEB 2025 to 20 MAR 2025

SE-2, 20 FEB 2025 to 20 MAR 2025

KNIGHTS THREE DEPARTURE



DEPARTURE ROUTE DESCRIPTION

TAKEOFF RUNWAYS 18L/R: Climb on heading 183° or as assigned by ATC, thence. . . .
TAKEOFF RUNWAY 18C: Climb on heading 183° to 1200 before turning left, thence. . . .
TAKEOFF RUNWAY 36L: Climb on heading 003° to 1800 before turning left, thence. . . .
TAKEOFF RUNWAY 36C: Climb on heading 003° to 1400 before turning left, thence. . . .
TAKEOFF RUNWAY 36R: Climb on heading 003° or as assigned by ATC, thence. . . .

. . . .expect RADAR vectors to intercept filed/assigned transition or enroute fix/navaid.
 Maintain 4000, expect filed altitude/flight level 10 minutes after departure.

ANDYS TRANSITION (KNI3.ANDYS): From over CLT VOR/DME on CLT R-196 to ANDYS.
CEGAL TRANSITION (KNI3.CEGAL): From over CLT VOR/DME on CLT R-360 to CEGAL.
DEBIE TRANSITION (KNI3.DEBIE): From over CLT VOR/DME on CLT R-255 to DEBIE.
FLYYN TRANSITION (KNI3.FLYYN): From over CLT VOR/DME on CLT R-360 to FLYYN.
HAMLN TRANSITION (KNI3.HAMLN): From over CLT VOR/DME on CLT R-175 to HAMLN.
LILLS TRANSITION (KNI3.LILLS): From over CLT VOR/DME on CLT R-112 to LILLS.
NEANO TRANSITION (KNI3.NEANO): From over CLT VOR/DME on CLT R-275 to BOBZY,
 then on ODF R-070 to NEANO.
PEKNN TRANSITION (KNI3.PEKNN): From over CLT VOR/DME on CLT R-093 to GIPPR,
 then on SDZ R-272 to PEKNN.

SE-2, 20 FEB 2025 to 20 MAR 2025

SE-2, 20 FEB 2025 to 20 MAR 2025