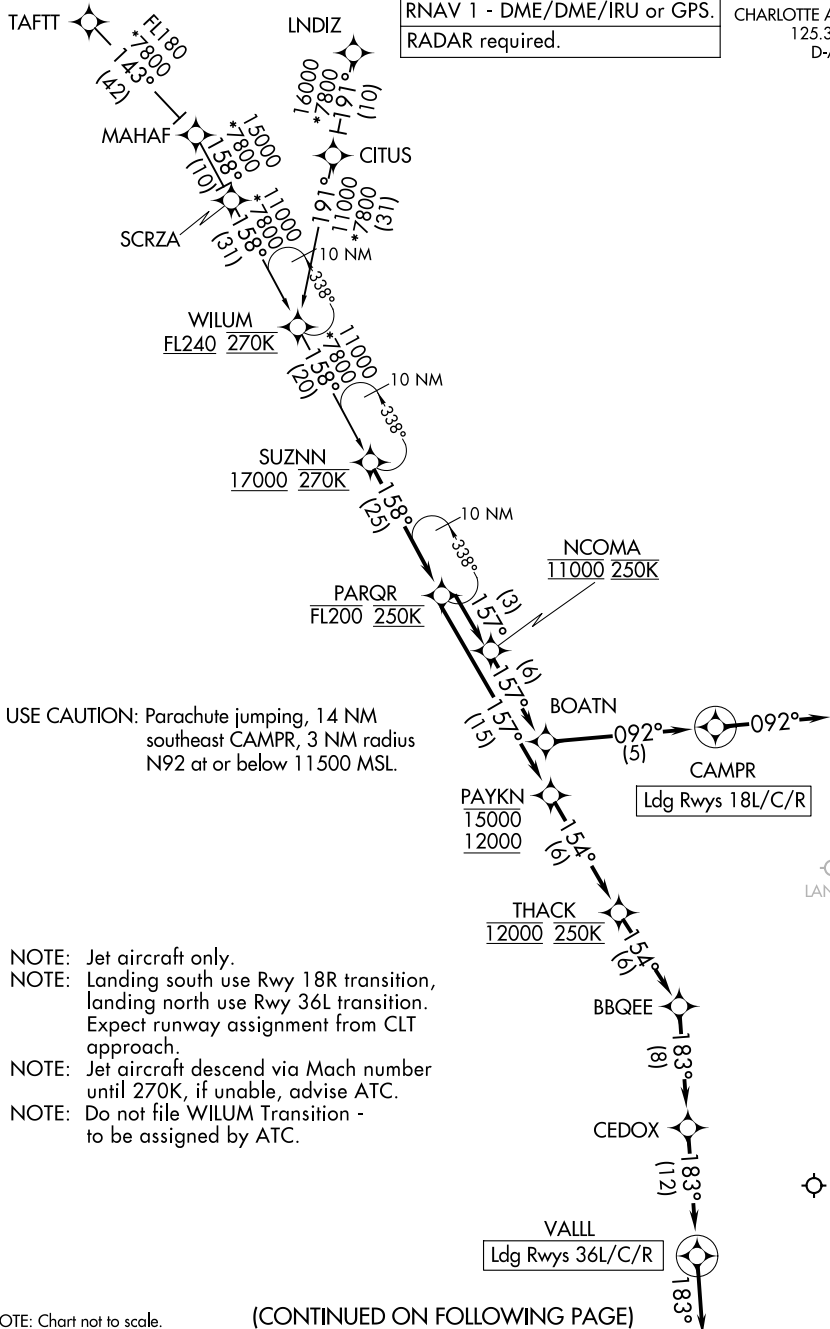


PARQR FOUR ARRIVAL (RNAV)

RNAV 1 - DME/DME/IRU or GPS.
RADAR required.

CHARLOTTE APP CON
125.35 257.2
D-ATIS ARR
121.15



USE CAUTION: Parachute jumping, 14 NM southeast CAMPR, 3 NM radius N92 at or below 11500 MSL.

- NOTE: Jet aircraft only.
- NOTE: Landing south use Rwy 18R transition, landing north use Rwy 36L transition. Expect runway assignment from CLT approach.
- NOTE: Jet aircraft descend via Mach number until 270K, if unable, advise ATC.
- NOTE: Do not file WILUM Transition - to be assigned by ATC.

NOTE: Chart not to scale.

(CONTINUED ON FOLLOWING PAGE)

PARQR FOUR ARRIVAL (RNAV)

PARQR FOUR ARRIVAL (RNAV)

ARRIVAL ROUTE DESCRIPTION

LNDIZ TRANSITION (LNDIZ.PARQR4)

TAFTT TRANSITION (TAFTT.PARQR4)

WILUM TRANSITION (WILUM.PARQR4)

From SUZNN on track 158° to cross PARQR at or below FL200 and at 250K.

LANDING RUNWAYS 18L/C/R: From PARQR on track 157° to cross NCOMA at 11000 and at 250K, then on track 157° to BOATN, then on track 092° to CAMPR, then on track 092°. Expect RADAR vectors to final approach course.

LANDING RUNWAYS 36L/C/R: From PARQR on track 157° to cross PAYKN between 12000 and 15000, then on track 154° to cross THACK at 12000 and at 250K, then on track 154° to BBQEE, then on track 183° to CEDOX, then on track 183° to VALL, then on track 183°. Expect RADAR vectors to final approach course.

SE-2, 20 FEB 2025 to 20 MAR 2025

SE-2, 20 FEB 2025 to 20 MAR 2025