

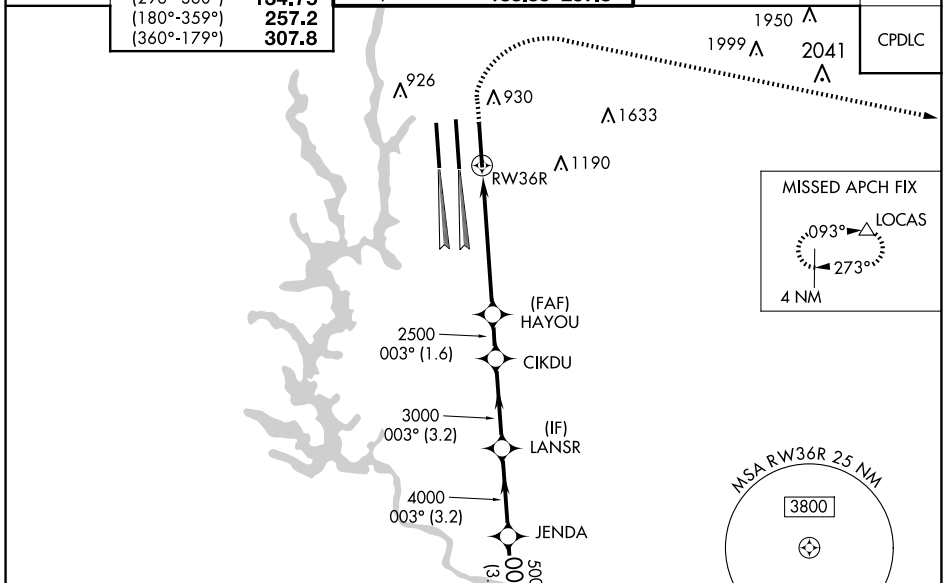
WAAS CH 90100 W36D	APP CRS 003°	Rwy Idg TDZE Apt Elev	8390 727 748
--	------------------------	-----------------------------	---

RNAV (GPS) Y RWY 36R

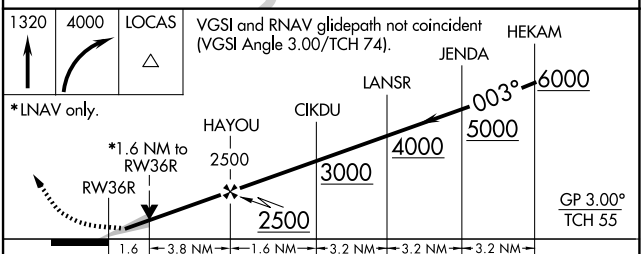
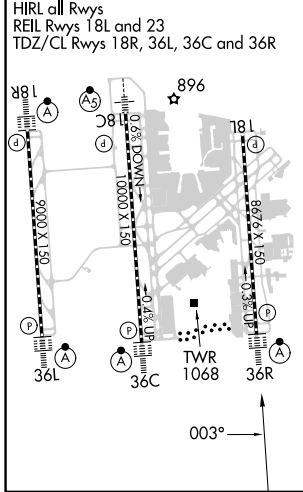
CHARLOTTE/DOUGLAS INTL (CLT)

RNP APCH.	<p>ALSF-2</p>	<p>MISSED APPROACH: Climb to 1320 then climbing right turn to 4000 direct LOCAS and hold.</p>
<p>▼ Circling NA at night. For uncompensated Baro-VNAV systems, LNAV/VNAV NA below -11°C or above 54°C. Simultaneous approach authorized. Use of FD or AP required during simultaneous operations. LNAV procedure NA during simultaneous operations. For inop ALSF, increase LNAV/VNAV all Cats visibility to 1/2 mile.</p>		

D-ATIS	CHARLOTTE APP CON	CHARLOTTE TOWER	WND CON	CLNC DEL
ARR 121.15	(001°-119°) 128.32 (120°-295°) 120.05 (296°-360°) 134.75 (180°-359°) 257.2 (360°-179°) 307.8	(Rwys 18L-36R) 118.1 257.8 (Rwy 18C-36C) 126.4 257.8 (Rwy 18R-36L) 133.35 257.8	121.8 348.6 (WEST) 121.9 348.6 (EAST)	127.15 348.6



ELEV 748	D	TDZE 727
----------	----------	----------



CATEGORY	A	B	C	D
LPV DA	927/18		200 (200-1/2)	
LNAV/VNAV DA	1229-1 1/4		502 (500-1 1/4)	
LNAV MDA	1320/24	593 (600-1/2)	1320-1 1/4	593 (600-1 1/4)
C CIRCLING	1380-1	632 (700-1)	1500-2 1/4 752 (800-2 1/4)	1500-2 1/2 752 (800-2 1/2)

SE-2, 20 FEB 2025 to 20 MAR 2025

SE-2, 20 FEB 2025 to 20 MAR 2025