

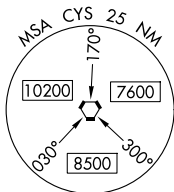
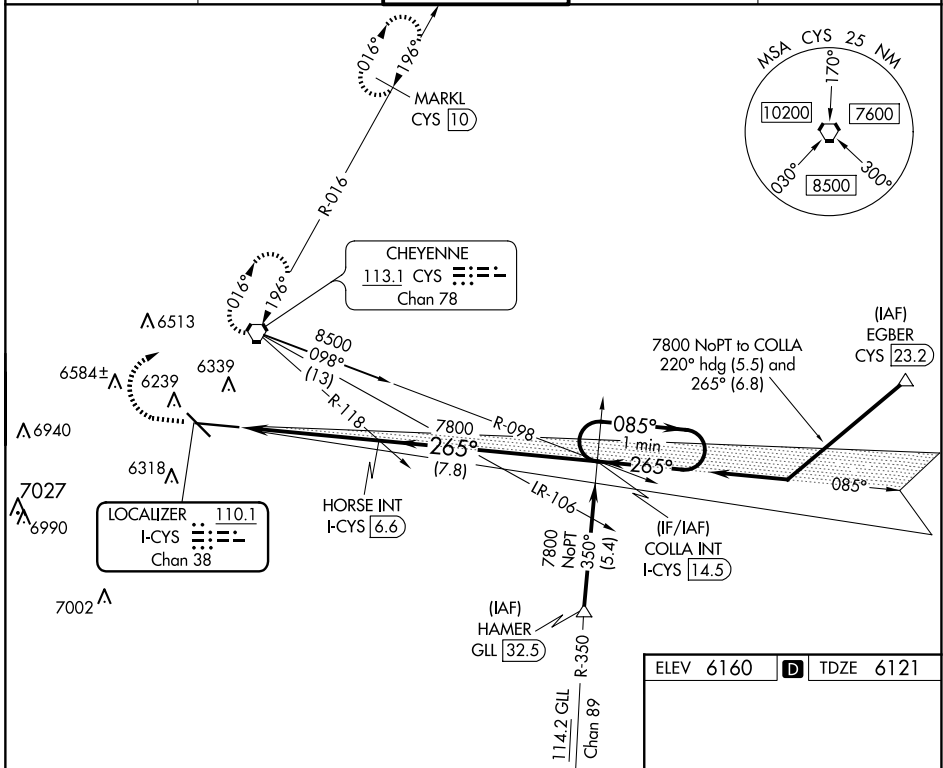
LOC/DME I-CYS <b>110.1</b> Chan <b>38</b>	APP CRS <b>265°</b>	Rwy ldg TDZE Apt Elev	<b>7985</b> <b>6121</b> <b>6160</b>
---	------------------------	-----------------------------	---

# ILS or LOC RWY 27

CHEYENNE RGNL/JERRY OLSON FLD (CYS)

<b>⚠</b> # RVR 1800 authorized with the use of FD or AP ASR/PAR or HUD to DA.	<b>MALSR</b> 	<b>MISSED APPROACH:</b> Climb to 6800, then climbing right turn to 8000 direct CYS VORTAC and hold, continue climb-in-hold to 8000 (TACAN aircraft continue on CYS VORTAC R-016 to MARKL/CYS 10 DME and hold N, RT, 196° inbound).
---	------------------	--

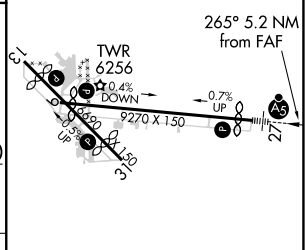
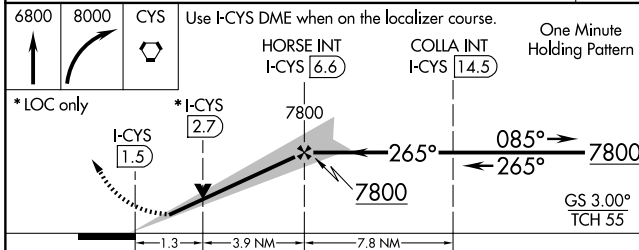
ATIS <b>134.425 278.3</b>	CHEYENNE APP CON★ <b>124.55 263.075</b>	CHEYENNE TOWER★ <b>118.7 (CTAF) 0 257.8</b>	GND CON <b>121.9 254.275</b>	UNICOM <b>122.95</b>
------------------------------	--	--	---------------------------------	-------------------------



NW-1, 20 FEB 2025 to 20 MAR 2025

NW-1, 20 FEB 2025 to 20 MAR 2025

ELEV 6160	<b>D</b> TDZE 6121
-----------	--------------------



CATEGORY	A	B	C	D
S-ILS 27 #	6321/24		200 (200-1/2)	
S-LOC 27	6560/24	439 (400-1/2)	6560/40	439 (400-3/4)
<b>C</b> CIRCLING	6640-1	480 (500-1)	6900-2 740 (800-2)	6920-2 1/2 760 (800-2 1/2)

REIL Rwy 9, 13, and 31 <b>⓪</b>
HIRL Rwy 9-27 <b>⓪</b>
MIRL Rwy 13-31 <b>⓪</b>
FAF to MAP 5.2 NM
Knots: 60 90 120 150 180
Min:Sec: 5:12 3:28 2:36 2:05 1:44