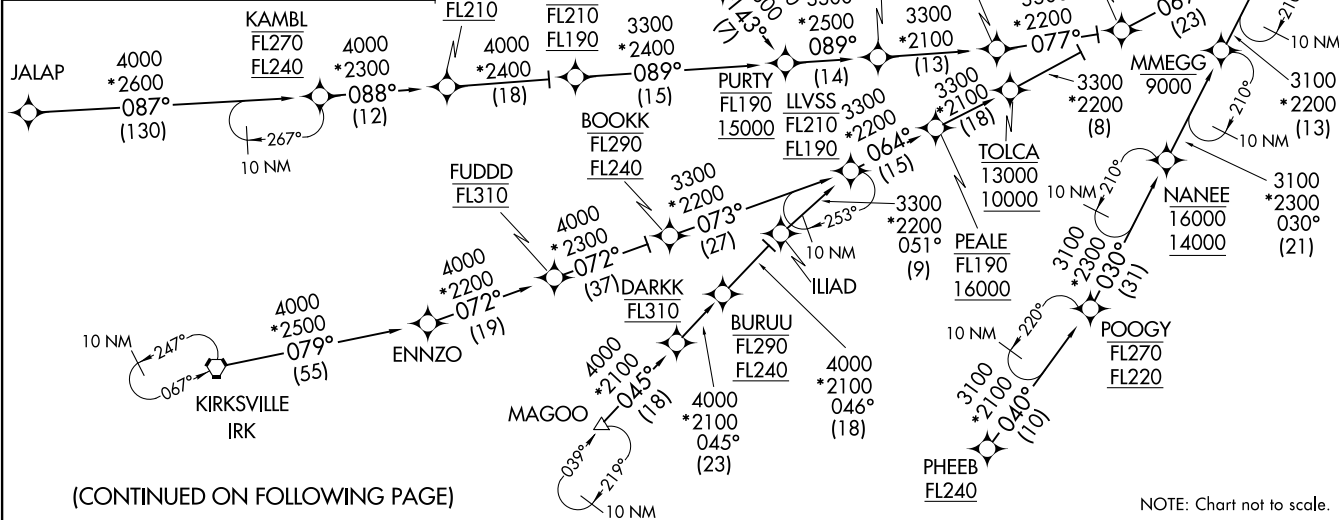


ENDEE SIX ARRIVAL (RNAV) Transition Routes  
(ENDEE. ENDEE6) 31DEC20

- CHUMP TRANSITION (CHUMP.ENDEE6)
- DARKK TRANSITION (DARKK.ENDEE6)
- EDENS TRANSITION (EDENS.ENDEE6)
- FUDD TRANSITION (FUDD.ENDEE6)
- JALAP TRANSITION (JALAP.ENDEE6)
- KAMBL TRANSITION (KAMBL.ENDEE6)
- KIRKSVILLE TRANSITION (IRK.ENDEE6)
- LLVSS TRANSITION (LLVSS.ENDEE6)
- MAGOO TRANSITION (MAGOO.ENDEE6)
- NANEE TRANSITION (NANEE.ENDEE6)
- OHHMY TRANSITION (OHHMY.ENDEE6)
- PHEEB TRANSITION (PHEEB.ENDEE6)
- POOGY TRANSITION (POOGY.ENDEE6)
- UGGLY TRANSITION (UGGLY.ENDEE6)



NOTE: RADAR required.  
 NOTE: RNAV 1.  
 NOTE: DME/DME/IRU or GPS required.  
 NOTE: DARKK, FUDD, NANEE, LLVSS,  
 CHUMP, EDENS, and POOGY  
 transitions: ATC assigned only.

D-ATIS  
 132.75  
 CHICAGO APP CON  
 128.2 353.875

See following  
 page for  
 Arrival Routes.

ENDEE  
 7000 250K  
 6000

(ENDEE. ENDEE6) 20366  
AL-81 (FAA)

CHICAGO MIDWAY INTL (MDW)  
CHICAGO, ILLINOIS

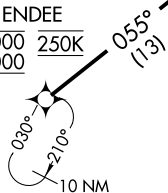
(CONTINUED ON FOLLOWING PAGE)

NOTE: Chart not to scale.

ENDEE SIX ARRIVAL (RNAV) Arrival Routes  
 (ENDEE, ENDEE6) 31 DEC 20  
 CHICAGO, ILLINOIS  
 CHICAGO MIDWAY INTL (MDW)

D-ATIS  
 132.75  
 CHICAGO APP CON  
 128.2 353.875

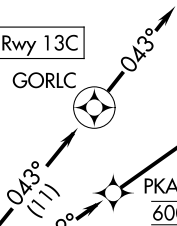
ENDEE  
 7000 250K  
 6000



STKNY  
 6000

KMDW ldg Rwy 13C

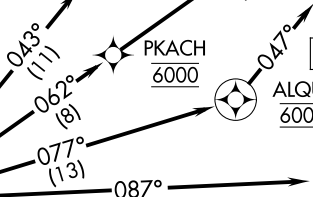
GORLC



PKACH  
 6000

ALQUE  
 6000

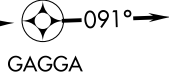
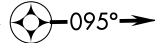
KMDW ldg Rwy 4R



TUURN

090°  
 (6)

WADLL KMDW ldg Rwy 22L



WNNRS (7)

GAGGA  
 KMDW ldg Rwy 31C

NOTE: RADAR required.  
 NOTE: RNAV 1.  
 NOTE: DME/DME/IRU or GPS required.



ARRIVAL ROUTE DESCRIPTION

From ENDEE on track 055° to cross STKNY at 6000.

LANDING RWY 4R: From STKNY on track 077° to cross ALQUE at 6000, then on track 047°.

Expect ILS or LOC RWY 4R approach or RADAR vectors to final approach course.

LANDING RWY 13C: From STKNY on track 043° to GORLC, then on track 043°.

Expect RADAR vectors to final approach course.

LANDING RWY 22L: From STKNY on track 062° to cross PKACH at 6000, then on track 062°

to TUURN, then on track 090° to WADLL, then on track 095°. Expect RADAR vectors to final approach course.

LANDING RWY 31C: From STKNY on track 087° to WNNRS, then on track 087° to GAGGA, then on track 091°.

Expect RADAR vectors to final approach course.

NOTE: Chart not to scale.

(ENDEE, ENDEE6) 20366  
 ENDEE SIX ARRIVAL (RNAV) Arrival Routes  
 AL-81 (FAA)  
 CHICAGO MIDWAY INTL (MDW)  
 CHICAGO, ILLINOIS