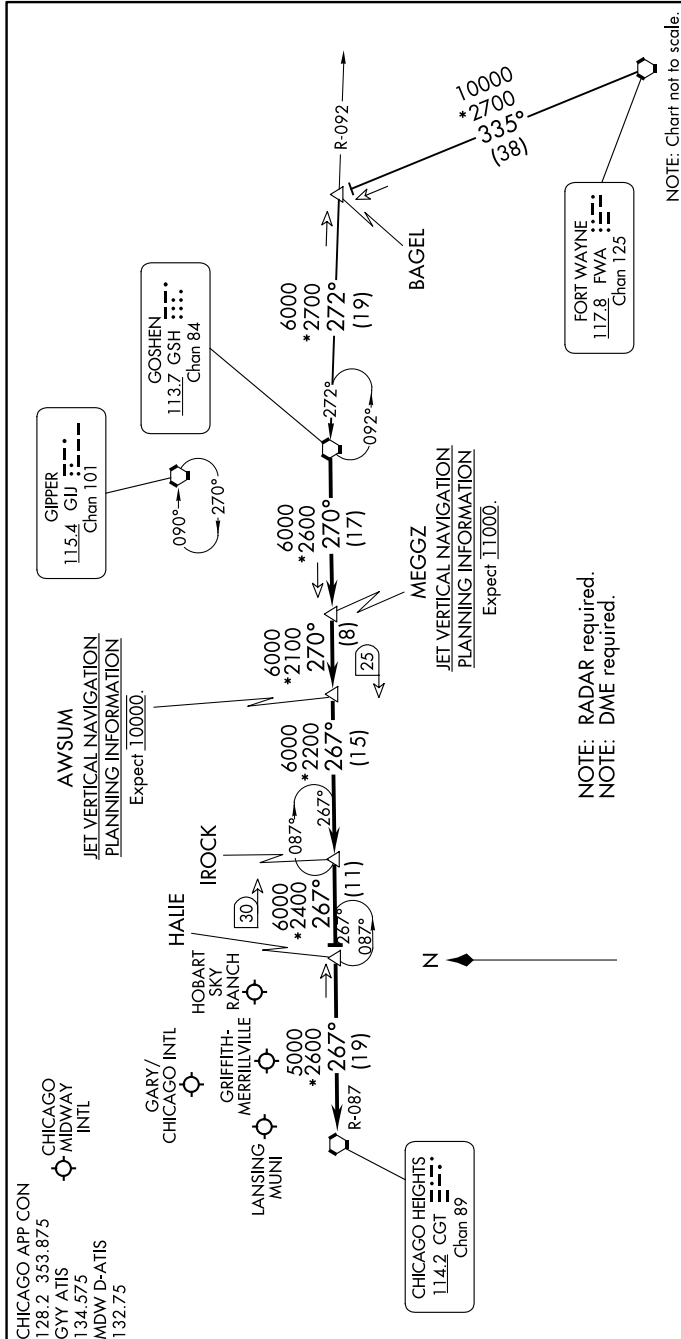


# GOSHEN ONE ARRIVAL

AL-81 (FAA)

CHICAGO, ILLINOIS

EC-3, 20 FEB 2025 to 20 MAR 2025



## ARRIVAL ROUTE DESCRIPTION

FORT WAYNE TRANSITION (FWA.GSH1): From over FWA VORTAC on FWA R-335 to BAGEL then on GSH R-092 to GSH VORTAC. Thence....

BAGEL TRANSITION (BAGEL.GSH1): From over BAGEL on GSH R-092 to GSH VORTAC. Thence....

....from over GSH R-270 to MEGGZ, then on GSH R-270 to AWSUM, then on GSH R-270 and CGT R-087 to IROCK, then on CGT R-087 to HALIE, then on CGT R-087 to CGT VORTAC. Expect RADAR vectors to final approach course.

# GOSHEN ONE ARRIVAL

EC-3, 20 FEB 2025 to 20 MAR 2025