

LOC/DME I-MXT <b>109.9</b> Chan <b>36</b>	APP CRS <b>318°</b>	Rwy Idg <b>5826</b> TDZE <b>613</b> Apt Elev <b>620</b>
---	------------------------	---

# ILS or LOC RWY 31C

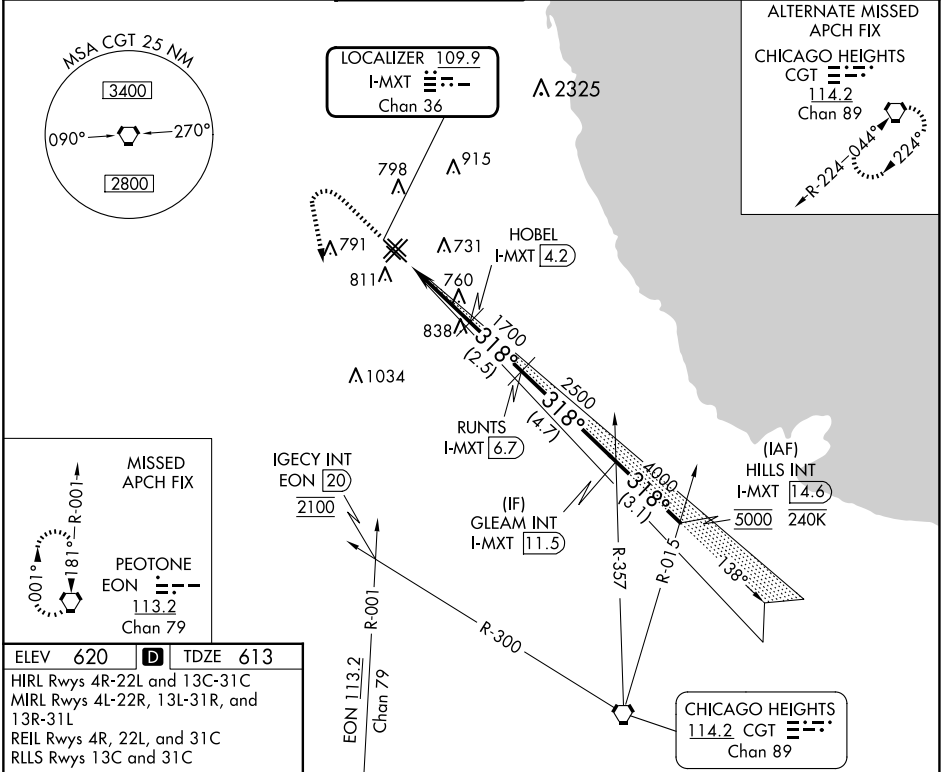
CHICAGO MIDWAY INTL (MDW)

DME and RADAR required.

**⚠** Circling Rwy 31R NA at night. Rwy 31C helicopter visibility reduction below RVR 4000 NA.

**⚠** MISSED APPROACH: Climb to 1100, then climbing left turn to 2100 on heading 150° and on EON VORTAC R-001 until crossing IGECY INT/EON 20 DME, then climb to 2600 to EON VORTAC and hold.

D-ATIS <b>132.75</b>	CHICAGO APP CON <b>128.2 353.875</b>	MIDWAY TOWER <b>135.2 269.125</b>	GND CON <b>118.075</b>	CLNC DEL <b>124.625</b>	CPDLC
-------------------------	---	--------------------------------------	---------------------------	----------------------------	-------



ELEV 620 **D** TDZE 613

HIRL Rwy 4R-22L and 13C-31C  
MIRL Rwy 4L-22R, 13L-31R, and 13R-31L  
REIL Rwy 4R, 22L, and 31C  
RLS Rwy 13C and 31C

TWR 750

1100	2100	2600	EON	HILLS INT I-MXT 14.6
↑	hdg 150°	↑	IGECY INT	↑
EON R-001			EON	
VGS and ILS glidepath not coincident (VGS Angle 3.00/TCH 63).				
1	2	1700	2500	4000
GS 3.00° TCH 48				
-1.1 NM - 2.2 NM - 2.5 NM - 4.7 NM - 3.1 NM -				
CATEGORY	A	B	C	D
S-ILS 31C	863/40		250 (300-¾)	
S-LOC 31C	1020/55	407 (400-1)	1020/60	407 (400-1¼)
<b>C</b> CIRCLING	1120-1	500 (500-1)	1340-2	1340-2¼ 720 (800-2¼)

EC-3, 20 FEB 2025 to 20 MAR 2025

EC-3, 20 FEB 2025 to 20 MAR 2025