

LOC/DME I-HKH 111.5 Chan 52	APP CRS 047°	Rwy Idg TDZE 619 Apt Elev 620
--	------------------------	---

ILS or LOC RWY 4R

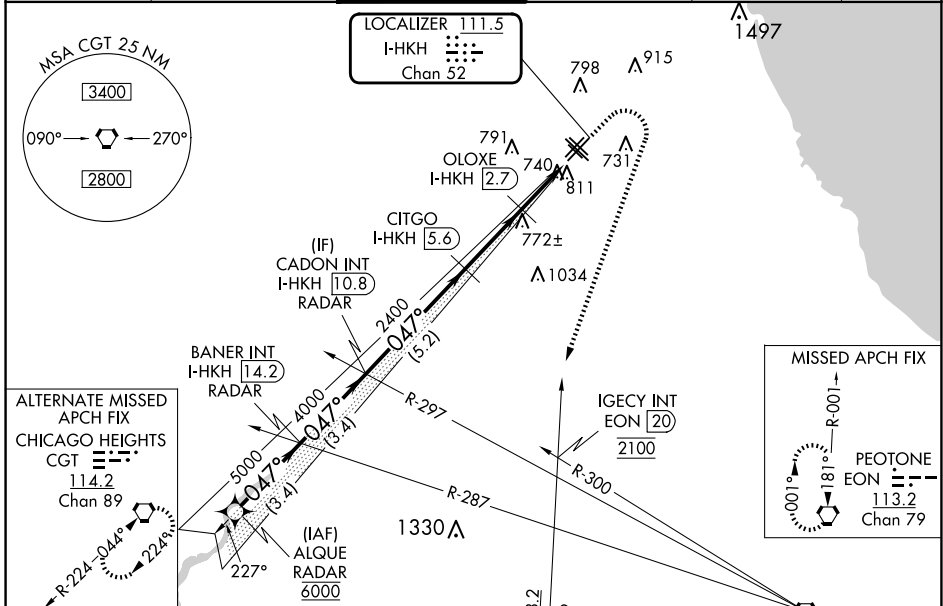
CHICAGO MIDWAY INTL (MDW)

RNAV 1-GPS or RADAR required for procedure entry. DME required for LOC only.

▼ Circling Rwy 31R NA at night.
▲ Rwy 4R helicopter visibility reduction below RVR 4000 NA.

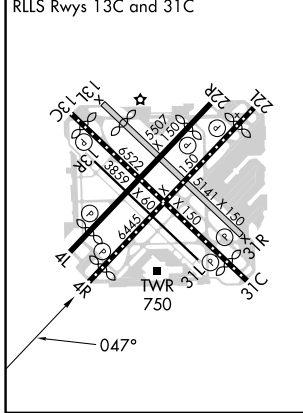
MISSED APPROACH: Climb to 1100 then climbing right turn to 2100 on heading 230° and on EON VORTAC R-001 until crossing IGCEY INT/EON 20 DME, then climb to 2600 to EON VORTAC and hold.

D-ATIS 132.75	CHICAGO APP CON 128.2 353.875	MIDWAY TOWER 135.2 269.125	GND CON 118.075	CLNC DEL 124.625	CPDLC
-------------------------	---	--------------------------------------	---------------------------	----------------------------	-------



ELEV 620	D	TDZE 619
----------	----------	----------

HIRL Rws 4R-22L and 13C-31C
 MIRL Rws 4L-22R, 13L-31R, and 13R-31L
 REIL Rws 4R, 22L, and 31C
 RLLS Rws 13C and 31C



VGSI and ILS glidepath not coincident (VGSI Angle 3.00/TCH 66).

ALQUE RADAR	BANER INT I-HKH 14.2 RADAR	CADON INT I-HKH 10.8 RADAR	CITGO I-HKH 5.6 RADAR	OLOXE I-HKH 2.7 RADAR	*I-HKH 1.2 RADAR	I-HKH 0.2 RADAR
-------------	-------------------------------	-------------------------------	--------------------------	--------------------------	---------------------	--------------------

1100 ↑
 2100 hdg 230°
 EON R-001

IGCEY INT ↑
 2600 EON

*LOC only

6000 047°
 5000
 4000
 2400
 *1460

GS 3.00°
 TCH 50

3.4 NM 3.4 NM 5.2 NM 2.9 NM 1.5 NM 1 NM

CATEGORY	A	B	C	D
S-ILS 4R	869/40	250 (300-¾)	869/50	250 (300-1)
S-LOC 4R	1000/55	381 (400-1)	1000/60	381 (400-1¼)
C CIRCLING	1120-1	500 (500-1)	1340-2 720 (800-2)	1340-2¼ 720 (800-2¼)

EC-3, 20 FEB 2025 to 20 MAR 2025

EC-3, 20 FEB 2025 to 20 MAR 2025