

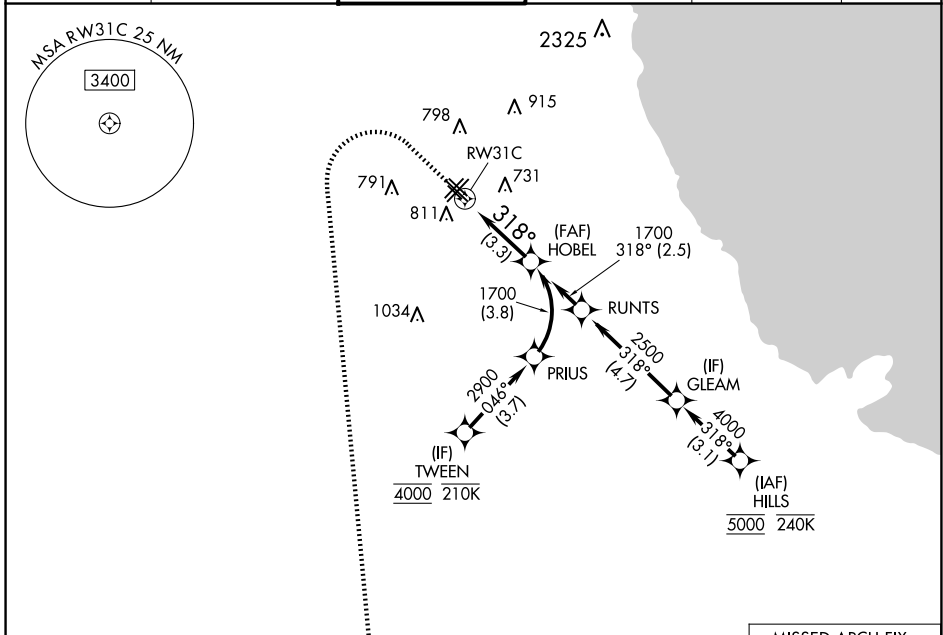
APP CRS 318°	Rwy Idg 5826
	TDZE 613
	Apt Elev 620

RNAV (RNP) Y RWY 31C

CHICAGO MIDWAY INTL (MDW)

RNP AR APCH - GPS.			MISSED APPROACH: Climb to 1100 then climbing left turn to 2600 direct EON VORTAC and hold.		
For uncompensated Baro-VNAV systems, procedure NA below -20°C or above 54°C.					

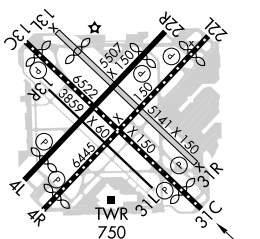
D-ATIS 132.75	CHICAGO APP CON 128.2 353.875	MIDWAY TOWER 135.2 269.125	GND CON 118.075	CLNC DEL 124.625	CPDLC
-------------------------	---	--------------------------------------	---------------------------	----------------------------	-------



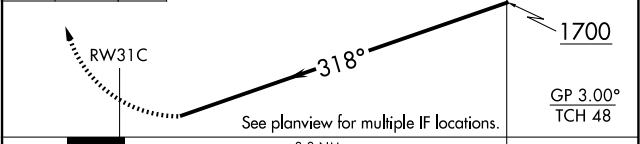
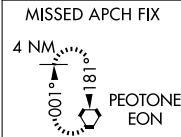
EC-3, 20 FEB 2025 to 20 MAR 2025

EC-3, 20 FEB 2025 to 20 MAR 2025

ELEV 620	D	TDZE 613
HIRL Rwy 4R-22L and 13C-31C		
MIRL Rwy 4L-22R, 13L-31R, and 13R-31L		
REIL Rwy 4R, 22L, and 31C		
RLLS Rwy 13C and 31C		



1100	2600	EON	VGSJ and RNAV glidepath not coincident (VGSJ Angle 3.00/TCH 63).	HOBEL 1700
------	------	-----	--	------------



CATEGORY	A	B	C	D
RNP 0.10 DA		905/45	292 (300-¾)	
RNP 0.20 DA		965/55	352 (400-1)	
RNP 0.30 DA		1029/60	416 (500-1½)	

AUTHORIZATION REQUIRED