

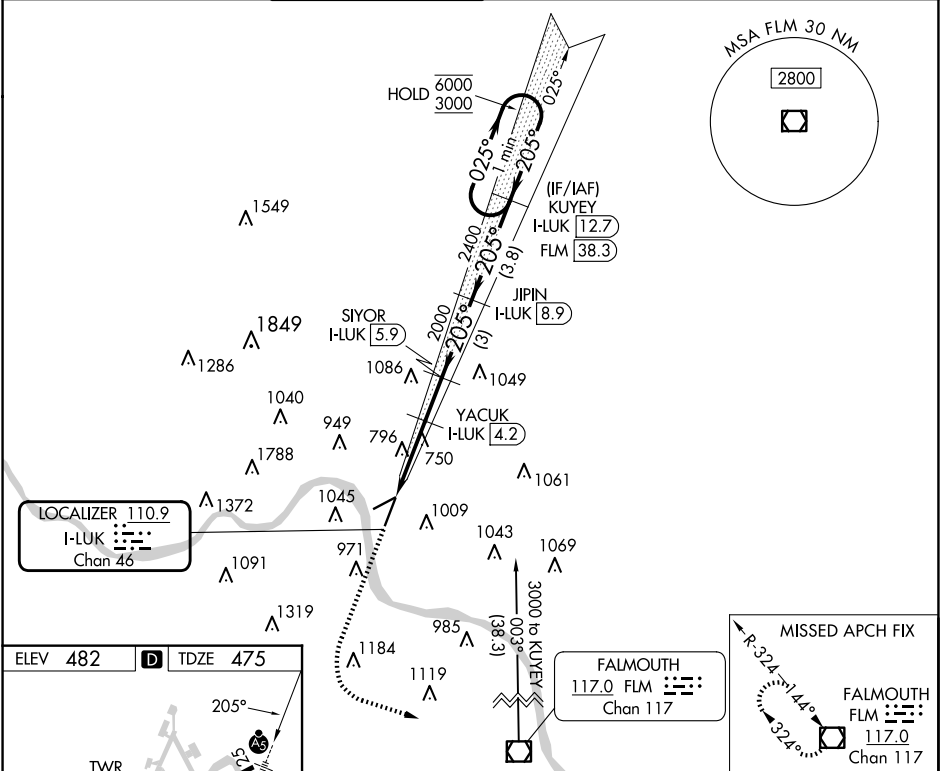
LOC/DME I-LUK	APP CRS	Rwy Idg	<b>6101</b>
<b>110.9</b>	<b>205°</b>	TDZE	<b>475</b>
Chan <b>46</b>		Apt Elev	<b>482</b>

# ILS or LOC RWY 21

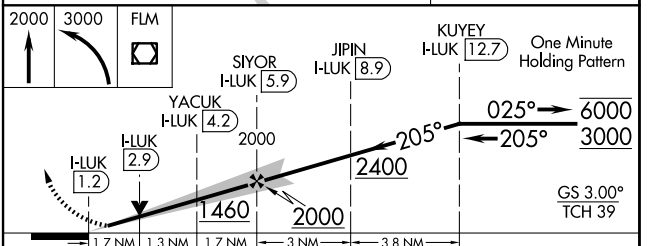
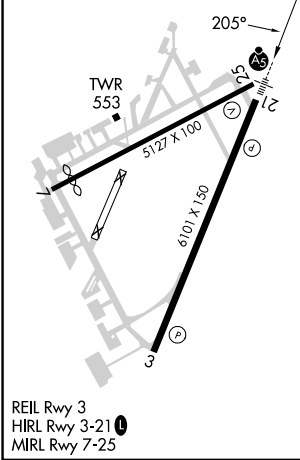
CINCINNATI MUNI/LUNKEN FLD (LUK)

DME required.	MALSR	MISSED APPROACH: Climb to 2000 then climbing left turn to 3000 direct FLM VOR/DME and hold.
<p><b>▼</b> Rwy 21 helicopter visibility reduction below RVR 4000 NA. Circling Rwy 7 NA at night. Circling NA for Cat D north of Rwy 7-25. Inop table does not apply to S-ILS 21 all Cats and S-LOC 21 Cats A and B.</p> <p><b>▲</b></p>		

ATIS <b>123.6</b>	CINCINNATI APP CON <b>121.0 254.25</b>	LUNKEN TOWER ★ <b>118.7 (CTAF) 0 257.8</b>	GND CON <b>121.9</b>	CLNC DEL <b>121.9</b>	CLNC DEL <b>124.9</b> (When twr closed)	UNICOM <b>122.95</b>
-------------------	--	--	----------------------	-----------------------	--	----------------------



ELEV <b>482</b>	<b>D</b>	TDZE <b>475</b>
-----------------	----------	-----------------



CATEGORY	A	B	C	D
S-ILS 21	797/50 322 (400-1)			
S-LOC 21	1060/50	585 (600-1)	1060-1¼	585 (600-1¼)
CIRCLING	1260-1 778 (800-1)	1360-1¼ 878 (900-1¼)	1360-2½ 878 (900-2½)	1400-3 918 (1000-3)

EC-2, 20 FEB 2025 to 20 MAR 2025

EC-2, 20 FEB 2025 to 20 MAR 2025