

WAAS CH 86701 W25A	APP CRS 246°	Rwy Idg TDZE Apt Elev	5127 478 483
--	------------------------	-----------------------------	---

RNAV (GPS) RWY 25

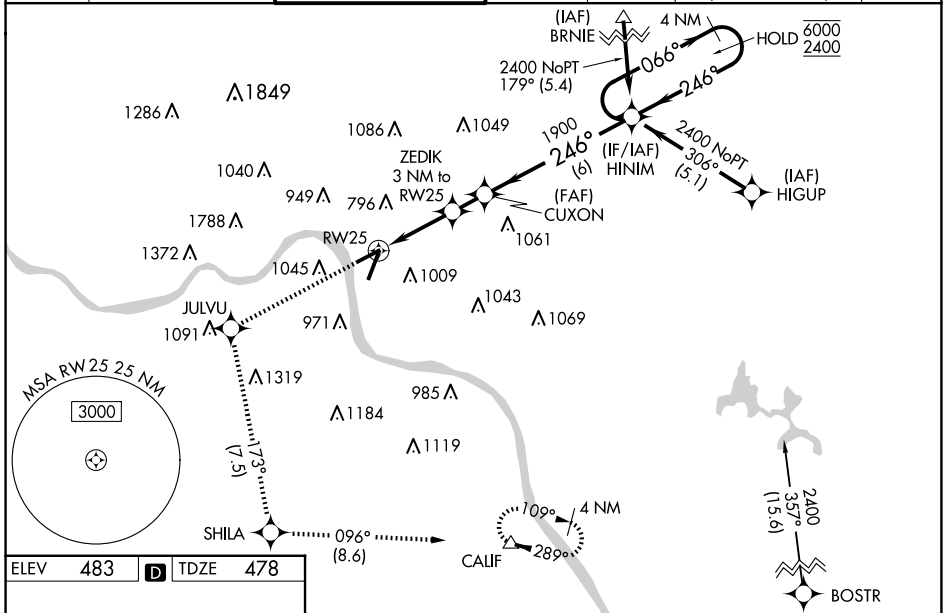
CINCINNATI MUNI/LUNKEN FLD (LUK)

RNP APCH.

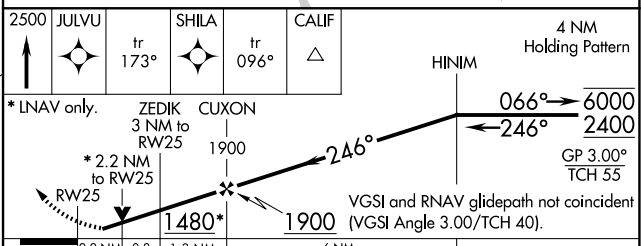
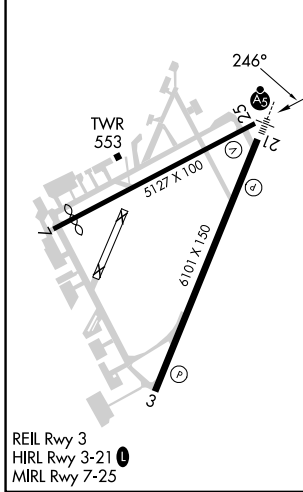
⚠ Circling NA for Cat D north of Rwy 7 and northwest of Rwy 21R. Circling Rwy 3L, 7, 21R NA at night.
⚠ Baro-VNAV and VDP NA when using Cincinnati/Northern Kentucky Intl altimeter setting. Rwy 25 helicopter visibility reduction below 3/4 SM NA. For uncompensated Baro-VNAV systems, LNAV/VNAV NA below -1.5°C or above 54°C. When local altimeter setting not received, use Cincinnati/Northern Kentucky Intl altimeter setting and increase LPV DA to 961 feet, all visibilities 1/8 SM; increase LNAV/VNAV DA to 1248 feet; increase all MDAs 100 feet, LNAV Cat B visibility 1/4 SM, and LNAV Cat C/D visibility 1/2 SM; increase Circling Cat B/D visibility 1/4 SM and Circling Cat C visibility 1/2 SM.

MISSED APPROACH:
 Climb to 2500 direct JULVU and on track 173° to SHILA and on track 096° to CALIF and hold, continue climb-in-hold to 2600.

ATIS 123.6	CINCINNATI APP CON 121.0 254.25	LUNKEN TOWER ★ 118.7 (CTAF) 0 257.8	GND CON 121.9	CLNC DEL 121.9	CLNC DEL 124.9 (when twr closed)	UNICOM 122.95
----------------------	---	--	-------------------------	--------------------------	---	-------------------------



ELEV 483	D	TDZE 478
----------	----------	----------



CATEGORY	A	B	C	D
LPV DA	875-1 1/4 397 (400-1 1/4)			
LNAV/VNAV DA	1162-2 1/2 684 (700-2 1/2)			
LNAV MDA	1160-1	682 (700-1)	1160-2	682 (700-2)
C CIRCLING	1300-1 1/4 817 (900-1 1/4)	1360-1 1/4 877 (900-1 1/4)	1360-2 1/2 877 (900-2 1/2)	1360-2 3/4 877 (900-2 3/4)

EC-2, 20 FEB 2025 to 20 MAR 2025

EC-2, 20 FEB 2025 to 20 MAR 2025