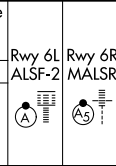


LOC/DME I-CLE 111.9 Chan 56	APP CRS 058°	Rwy Idg TDZE Apt Elev	6R 8029 777 799	6L 9000 773 799
--	------------------------	-----------------------------	---	---

ILS or LOC RWY 6R

CLEVELAND-HOPKINS INTL (CLE)

From GROHL, HICKR, and RUHSH: RNAV 1-DME/DME/IRU or GPS required for procedure entry. Aircraft not DME/DME/IRU or GPS equipped - RADAR required for procedure entry. RNAV 1.

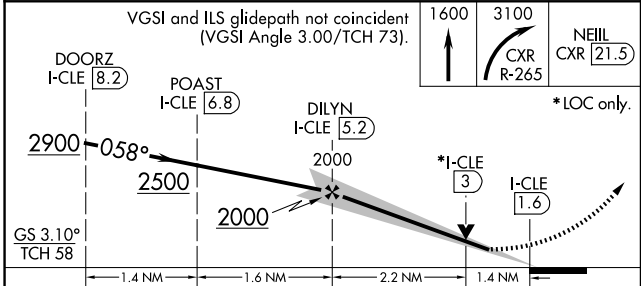
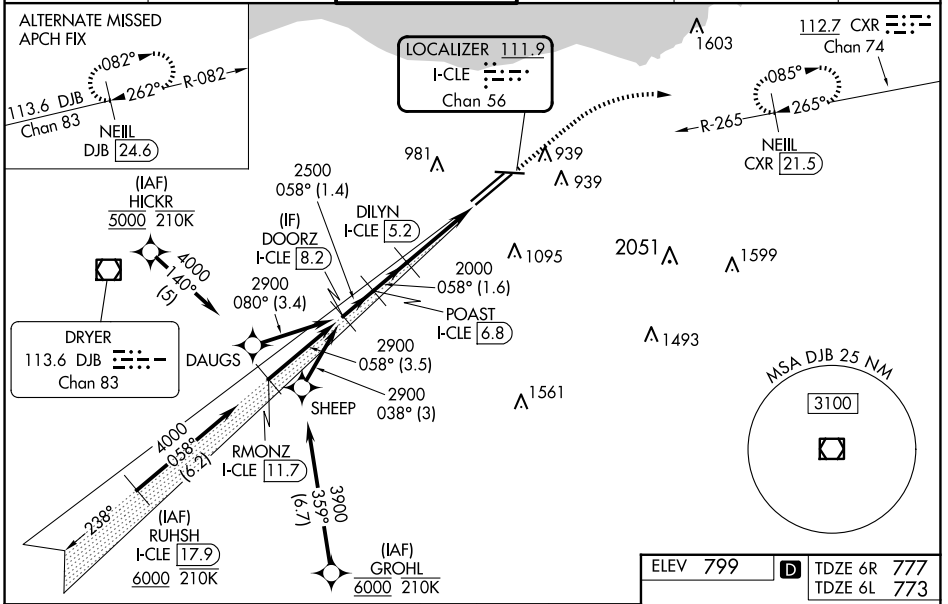


MISSED APPROACH:
Climb to 1600 then climbing right turn to 3100 on CXR VOR/DME R-265 to NEILL/CXR 21.5 DME and hold.

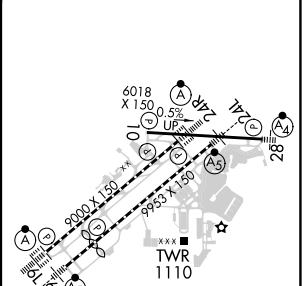
DME required.

▼ Circling Rwy 10 NA at night. Simultaneous approach authorized. Simultaneous operations require use of vertical guidance; maintain last assigned altitude until established on glideslope. Inop table does not apply to Sidestep 6L. For inop ALS, increase S-LOC 6R Cats C/D visibility to 1 1/8 SM.

D-ATIS ARR 127.85 DEP 132.375	CLEVELAND APP CON 126.55 346.325	CLEVELAND TOWER 124.5 273.45	GND CON 121.7 273.45	CLNC DEL 125.05 273.45	CPDLC
---	--	--	--------------------------------	----------------------------------	-------



ELEV 799	D TDZE 6R 777
	TDZE 6L 773



CATEGORY	A	B	C	D
S-ILS 6R	977/18		200 (200-1/2)	
S-LOC 6R	1260/24	483 (500-1/2)	1260/50	483 (500-1)
SIDESTEP 6L	1260/55	487 (500-1)	1260-1 1/2 487 (500-1 1/2)	1260-2 487 (500-2)
C CIRCLING	1420-1	621 (700-1)	1420-1 3/4 621 (700-1 3/4)	1420-2 621 (700-2)

REIL Rwy 10
TDZ/CL Rwy 6L, 6R, 24L and 24R
HIRL Rwy 6L-24R, 6R-24L and 10-28

EC-2, 20 FEB 2025 to 20 MAR 2025

EC-2, 20 FEB 2025 to 20 MAR 2025