

RNAV (RNP) Z RWY 24R

CLEVELAND-HOPKINS INTL (CLE)

APP CRS	Rwy Idg	9000
238°	TDZE	780
	Apt Elev	799

RNP AR APCH.

▼ For uncompensated Baro-VNAV systems, procedure NA below -18°C (0°F) or above 54°C (130°F). For inop ALS, increase RNP 0.13 all Cats visibility to RVR 4500.

ALSF-2

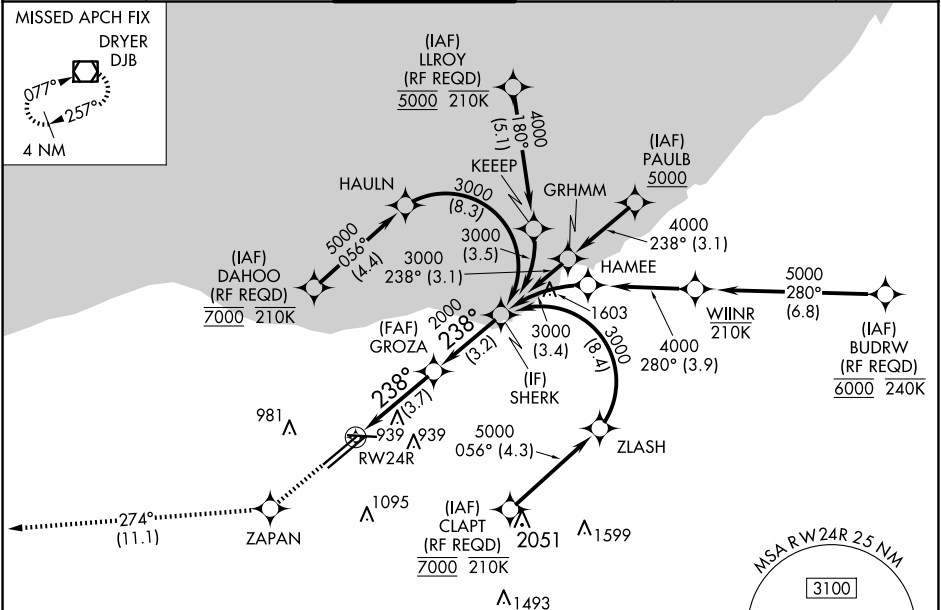
MISSED APPROACH: Climb to 3000 direct ZAPAN and on track 274° to DJB VOR/DME and hold.

D-ATIS	CLEVELAND APP CON	CLEVELAND TOWER	GND CON	CLNC DEL	CPDLC
ARR 127.85	126.55 346.325	124.5 273.45	121.7 273.45	125.05 273.45	
DEP 132.375					

MISSED APCH FIX

DRYER
DJB

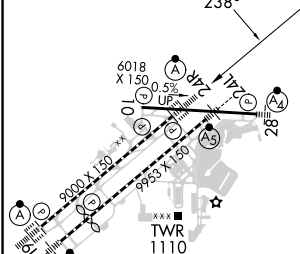
4 NM



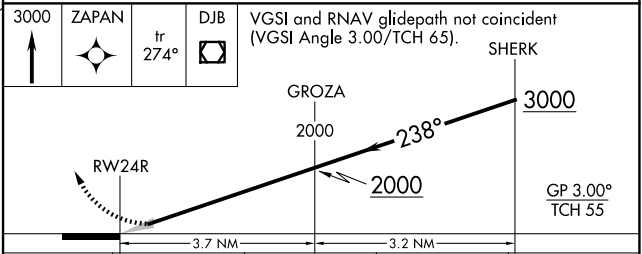
EC-2, 20 FEB 2025 to 20 MAR 2025

EC-2, 20 FEB 2025 to 20 MAR 2025

ELEV 799	D	TDZE 780
----------	----------	----------



REIL Rwy 10
TDZ/CL Rwy 6L, 6R, 24L and 24R
HIRL Rwy 6R-24L, and 6L-24R, 10-28



CATEGORY	A	B	C	D
RNP 0.13 DA		1064/24	284 (300-½)	
RNP 0.30 DA		1176/35	396 (400-¾)	

AUTHORIZATION REQUIRED