

RNAV (RNP) Z RWY 6L

CLEVELAND-HOPKINS INTL (CLE)

APP CRS 058°	Rwy Idg 9000
	TDZE 773
	Apt Elev 799

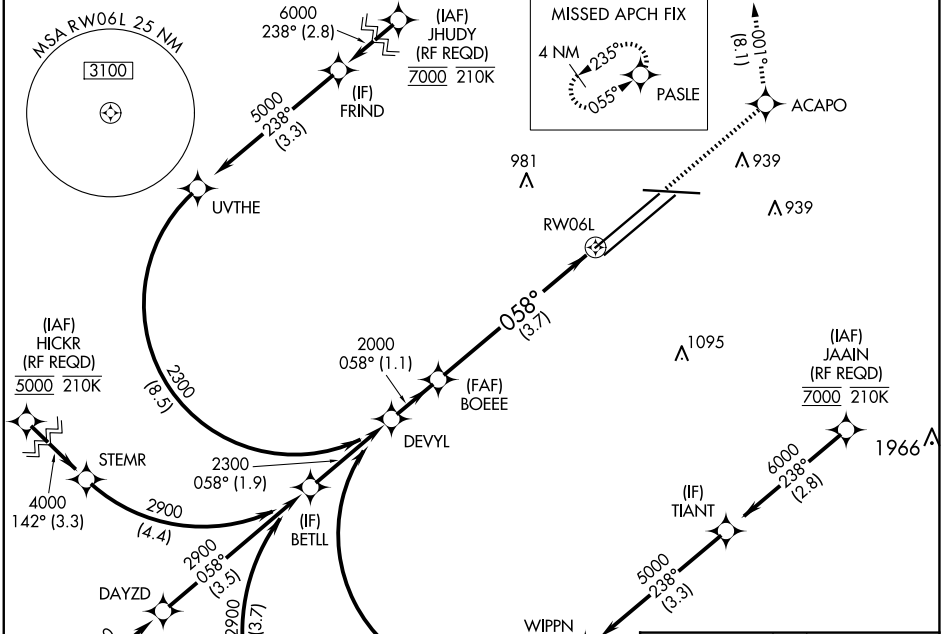
RNP AR APCH.

▼ For uncompensated Baro-VNAV systems, procedure NA below -18°C (0°F) or above 54°C (130°F). For inop ALS, increase RNP 0.17 all Cats visibility to RVR 5500 and RNP 0.30 all Cats visibility to RVR 6000.

ALSf-2

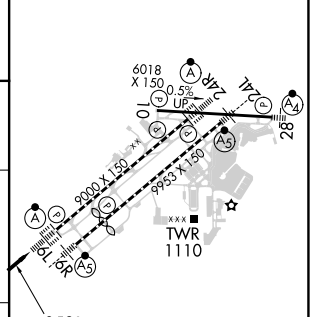
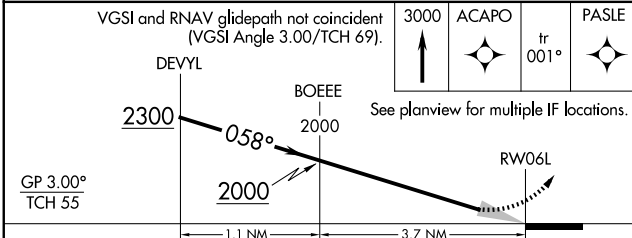
MISSED APPROACH: Climb to 3000 direct ACAPO and on track 001° to PASLE and hold.

D-ATIS ARR 127.85 DEP 132.375	CLEVELAND APP CON 126.55 346.325	CLEVELAND TOWER 124.5 273.45	GND CON 121.7 273.45	CLNC DEL 125.05 273.45	CPDLC
---	--	--	--------------------------------	----------------------------------	-------



(IAF) HICKR (RF REQD) 5000 210K	2300 (8.5)	2000 058° (1.1)	(FAF) BOEEE	(IAF) JAAIN (RF REQD) 7000 210K
4000 142° (3.3)	2900 (4.4)	2900 058° (1.9)		
4000 058° (6.1)	2900 058° (3.5)	2900 058° (3.7)		
(IAF) KWENE (RF REQD) 6000 210K	4000 356° (5.9)	4000 058° (3.7)		
		2300 (8.5)		

ELEV 799	D TDZE 773
----------	-------------------



CATEGORY	A	B	C	D
RNP 0.17 DA		1123/30	350 (400-5%)	
RNP 0.30 DA		1176/40	403 (400-3/4)	

AUTHORIZATION REQUIRED

REIL Rwy 10
TDZ/CL Rwy 6L, 6R, 24L, and 24R
HIRL Rwy 6L-24R, 6R-24L and 10-28

EC-2, 20 FEB 2025 to 20 MAR 2025

EC-2, 20 FEB 2025 to 20 MAR 2025