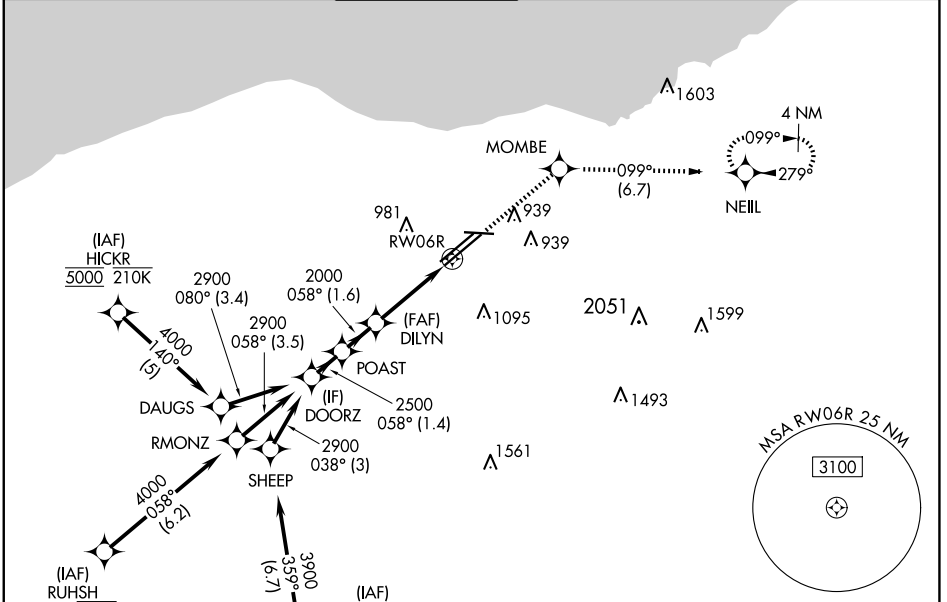


WAAS CH <b>81806</b> <b>W06B</b>	APP CRS <b>058°</b>	Rwy Idg TDZE <b>777</b> Apt Elev <b>799</b>	<b>8029</b>
--	------------------------	---	-------------

# RNAV (GPS) Y RWY 6R

CLEVELAND-HOPKINS INTL (CLE)

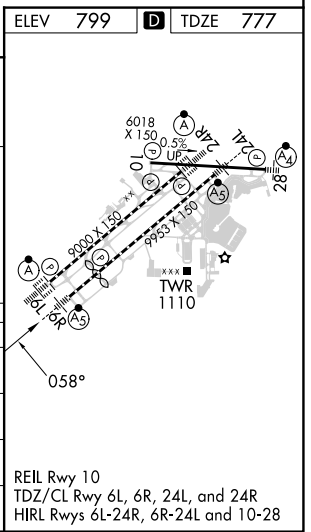
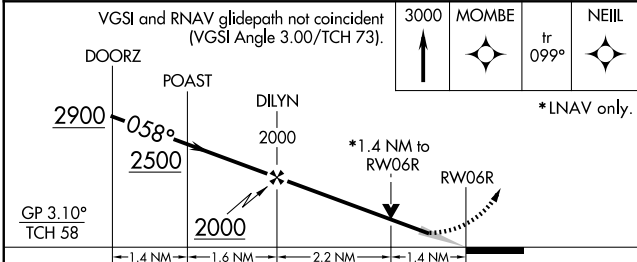
RNP APCH.		MALSR		MISSED APPROACH: Climb to 3000 direct MOMBE and on track 099° to NEILL and hold.	
<p>▼ For uncompensated Baro-VNAV systems, LNAV/VNAV NA below -18°C (0°F) or above 46°C (114°F). Circling Rwy 10 NA at night. For inop ALS, increase LNAV Cats C/D visibility to 1½ SM.</p>					
D-ATIS ARR <b>127.85</b> DEP <b>132.375</b>	CLEVELAND APP CON <b>126.55 346.325</b>	CLEVELAND TOWER <b>124.5 273.45</b>	GND CON <b>121.7 273.45</b>	CLNC DEL <b>125.05 273.45</b>	CPDLC



EC-2, 20 FEB 2025 to 20 MAR 2025

EC-2, 20 FEB 2025 to 20 MAR 2025

ELEV 799	<b>D</b> TDZE 777
----------	-------------------



CATEGORY	A	B	C	D
LPV DA	977/18		200 (200-½)	
LNAV/VNAV DA	1227/45		450 (500-¾)	
LNAV MDA	1260/24	483 (500-½)	1260/50	483 (500-1)
<b>C</b> CIRCLING	1420-1	621 (700-1)	1420-1¾ 621 (700-1¾)	1420-2 621 (700-2)