

|             |          |             |
|-------------|----------|-------------|
| APP CRS     | Rwy Idg  | <b>6095</b> |
| <b>034°</b> | TDZE     | <b>4186</b> |
|             | Apt Elev | <b>4187</b> |

# RNAV (GPS) RWY 3

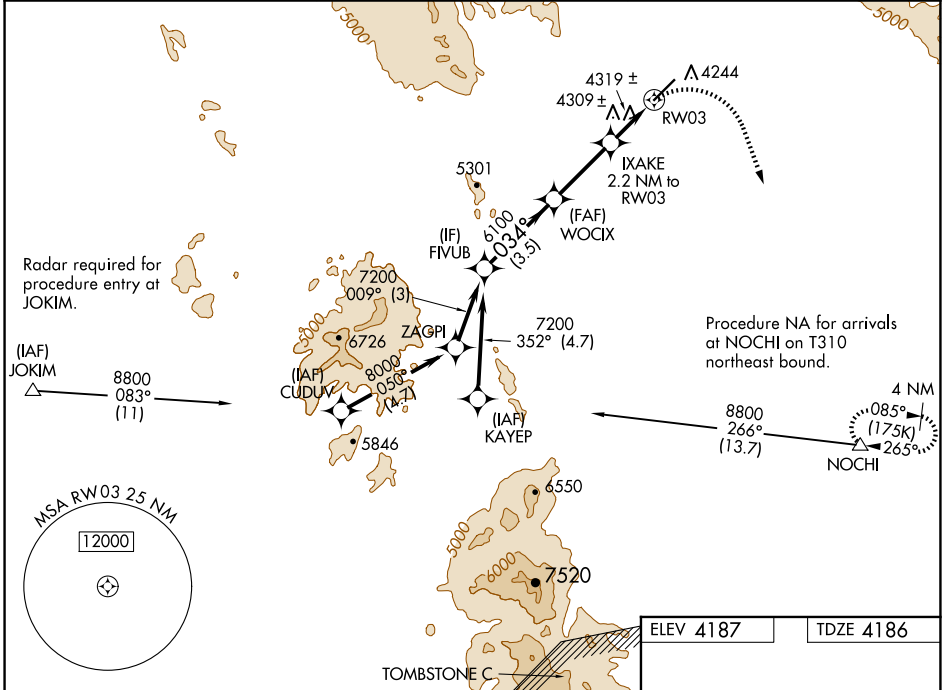
COCHISE COUNTY (P33)

RNP APCH - GPS.

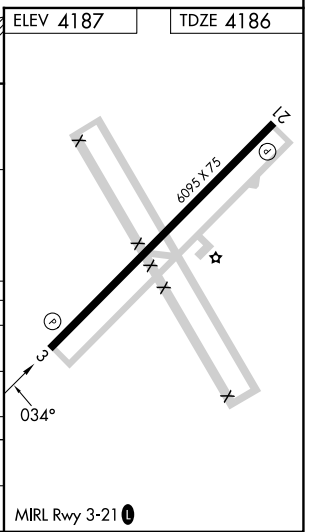
When local altimeter setting not received, use Douglas Bisbee altimeter setting. VDP NA with Douglas Bisbee altimeter setting.

MISSED APPROACH: Climbing right turn to 8800 direct NOCHI and hold, continue climb-in-hold to 8800.

|                            |  |                                 |
|----------------------------|--|---------------------------------|
| AWOS-3PT<br><b>119.025</b> | ALBUQUERQUE CENTER<br><b>134.45 327.15</b> | UNICOM<br><b>122.8 (CTAF) 0</b> |
|----------------------------|--|---------------------------------|



|   |             |             |        |        |
|---|-------------|-------------|--------|--------|
|   | FIVUB       | WOCIX       | IXAKE  | RW03   |
|   | 7200        | 6100        | 5040   |        |
|   | 034°        | 3.50°       | TCH 40 |        |
|   | 3.5 NM      | 2.9 NM      | 1.3 NM | 0.9 NM |
| CATEGORY                                  | A           | B           | C      | D      |
| LNAV MDA                                  | 4560-1      | 374 (400-1) |        | NA     |
| CIRCLING                                  | 4600-1      | 4660-1      |        | NA     |
|   | 413 (500-1) | 473 (500-1) |        |        |
| DOUGLAS BISBEE ALTIMETER SETTING MINIMUMS |             |             |        |        |
| LNAV MDA                                  | 4680-1      | 494 (500-1) |        | NA     |
| CIRCLING                                  | 4720-1      | 4780-1      |        | NA     |
|   | 533 (600-1) | 593 (600-1) |        |        |



SW-4, 20 FEB 2025 to 20 MAR 2025

SW-4, 20 FEB 2025 to 20 MAR 2025