

RNAV (RNP) Z RWY 35L

CITY OF COLORADO SPRINGS MUNI (COS)

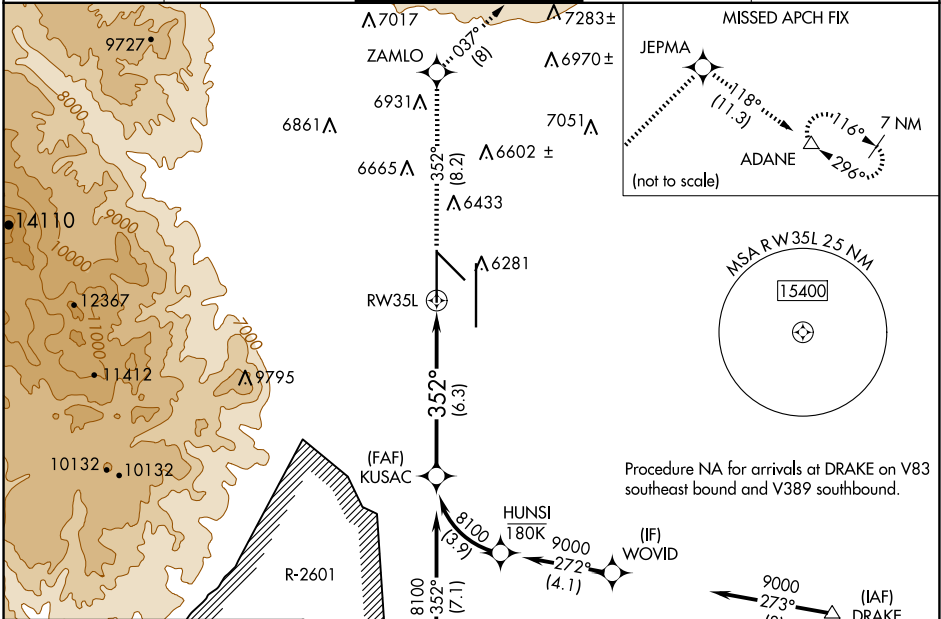
APP CRS	Rwy Idg	11022
352°	TDZE	6075
	Apt Elev	6187

▼ For uncompensated Baro-VNAV systems, procedure NA below -21°C (-5°F) or above 45°C (113°F). GPS required. For inop MALSRL increase RNP 0.15 visibility all Cats to RVR 5000. RADAR monitoring required when R-2601 in use.

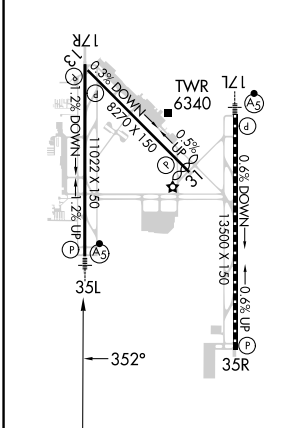


MISSED APPROACH: Climb to 9000 on track 352° to ZAMLO and on track 037° to JEPMA and on track 118° to ADANE and hold.

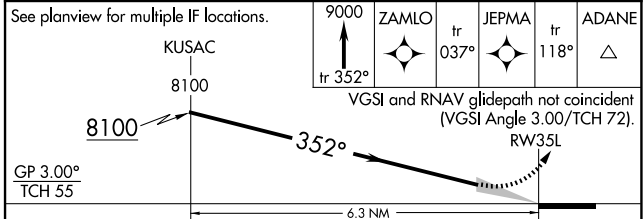
ATIS 125.0 254.3	SPRINGS APP CON 124.0 257.875	SPRINGS TOWER 119.9 360.6	GND CON 121.7 348.6	CLNC DEL 134.45 363.125
----------------------------	---	-------------------------------------	-------------------------------	-----------------------------------



ELEV 6187 **D** TDZE 6075
 MIRL Rwy 13-31
 HIRL Rws 17R-35L and 17L-35R
 REIL Rws 13, 17R, 31, and 35R
 TDZ/CL Rws 17L and 35R



Procedure NA for arrivals at DRAKE on V83 southeast bound and V389 southbound.
 Procedure NA for arrivals at FSHER on V244 eastbound.



GP 3.00°	TCH 55	6.3 NM			
CATEGORY	A	B	C	D	
RNP 0.15 DA		6372/30	297 (200-5%)		
RNP 0.30 DA		6427/40	352 (300-3/4)		

AUTHORIZATION REQUIRED

SW-1, 20 FEB 2025 to 20 MAR 2025

SW-1, 20 FEB 2025 to 20 MAR 2025