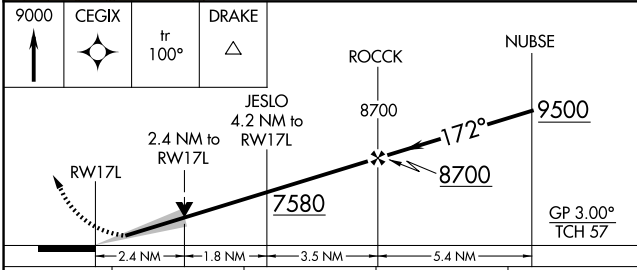
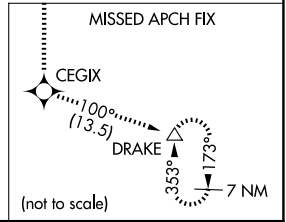
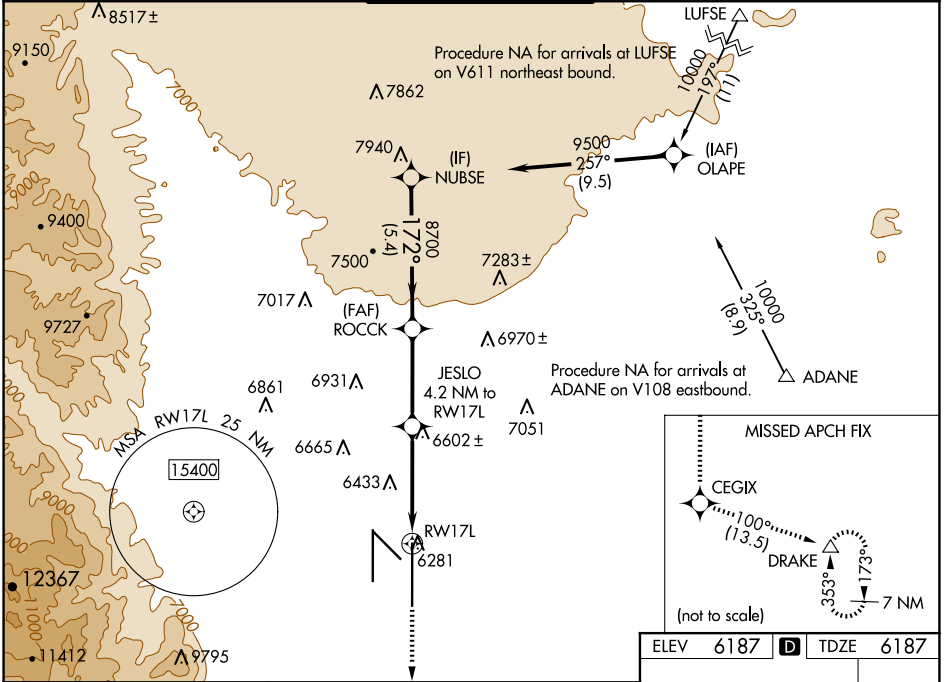


WAAS CH 69618 W17A	APP CRS 172°	Rwy Idg TDZE 6187 Apt Elev 6187	13500
--	------------------------	---	--------------

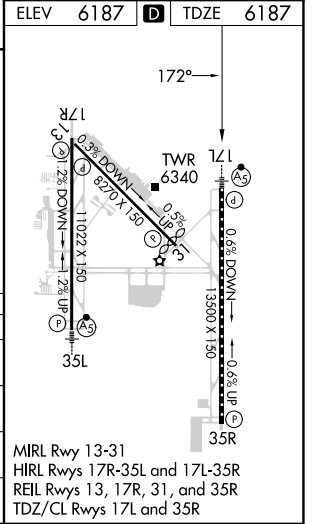
RNAV (GPS) Y RWY 17L

CITY OF COLORADO SPRINGS MUNI (COS)

RNP APCH - GPS.		SPRINGS APP CON 124.0 257.875		SPRINGS TOWER 119.9 360.6		GND CON 121.7 348.6		CLNC DEL 134.45 363.125	
<p>▼ For uncompensated Baro-VNAV systems, LNAV/VNAV NA below -21°C or above 44°C. For inop MALSRL, increase LNAV Cat C/D visibility to 2½ SM.</p>		MALSRL		<p>MISSED APPROACH: Climb to 9000 direct CEGIX and on track 100° to DRAKE and hold.</p>					



CATEGORY	A	B	C	D
LPV DA	6387/18		200 (200-½)	
LNAV/VNAV DA	6602/45		415 (500-¾)	
LNAV MDA	7000/24 813 (900-½)	7000/40 813 (900-¾)	7000-1⅞	813 (900-1⅞)
CIRCLING	7000-1¼ 813 (900-1¼)		7040-2½ 853 (900-2½)	7260-3 1073 (1100-3)



SW-1, 20 FEB 2025 to 20 MAR 2025

SW-1, 20 FEB 2025 to 20 MAR 2025