

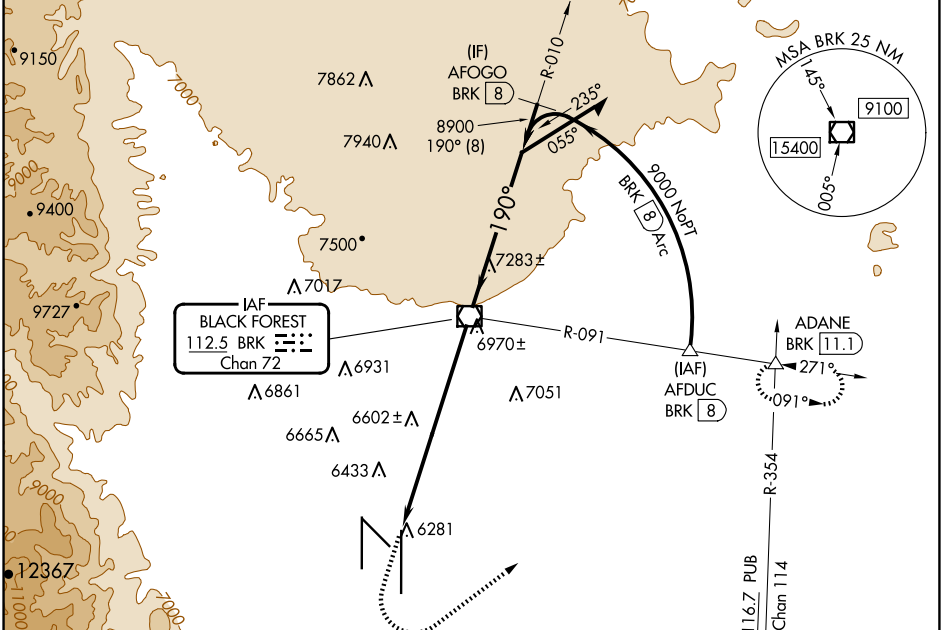
VOR/DME BRK <b>112.5</b> Chan <b>72</b>	APP CRS <b>190°</b>	Rwy Idg <b>13500</b> TDZE <b>6187</b> Apt Elev <b>6187</b>
---	------------------------	--

# VOR RWY 17L

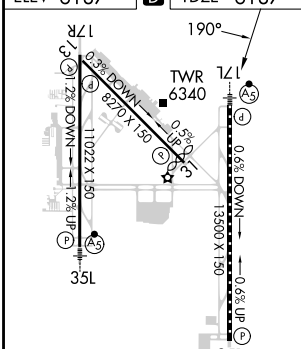
CITY OF COLORADO SPRINGS MUNI (COS)

DME and RADAR required for procedure entry at AFDUC.	MALSR 	MISSED APPROACH: Climb to 7900 then climbing left turn to 9000 on heading 045° and BRK VOR/DME R-091 to ADANE INT/BRK VOR/DME 11.1 DME and hold.
 Inop table does not apply.		

ATIS <b>125.0 254.3</b>	SPRINGS APP CON <b>124.0 257.875</b>	SPRINGS TOWER <b>119.9 360.6</b>	GND CON <b>121.7 348.6</b>	CLNC DEL <b>134.45 363.125</b>
----------------------------	---	-------------------------------------	-------------------------------	-----------------------------------



ELEV <b>6187</b>	<b>D</b>	TDZE <b>6187</b>
------------------	----------	------------------

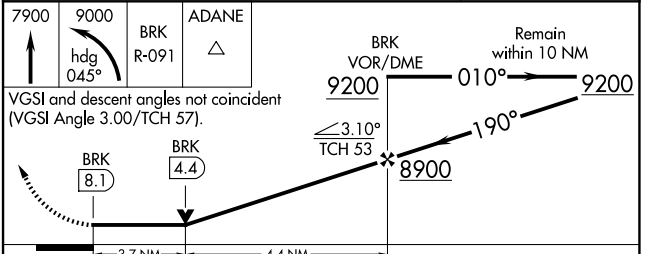


MIRL Rwy 13-31  
HIRL Rwys 17R-35L and 17L-35R  
REIL Rwys 13, 17R, 31 and 35R  
TDZ/CL Rwys 17L and 35R

FAF to MAP 8.1 NM

Knots	60	90	120	150	180
Min:Sec	8:06	5:24	4:03	3:14	2:42

CIRCLING



CATEGORY	A	B	C	D
S-17L	7440-1¼ 1253 (1300-1¼)	7440-1½ 1253 (1300-1½)	7440-3	1253 (1300-3)
<input checked="" type="checkbox"/> CIRCLING	7440-1¼ 1253 (1300-1¼)	7440-1½ 1253 (1300-1½)	7440-3	1253 (1300-3)

# VOR RWY 17L

SW-1, 20 FEB 2025 to 20 MAR 2025

SW-1, 20 FEB 2025 to 20 MAR 2025