

APP CRS	Rwy Idg	5364
171°	TDZE	339
	Apt Elev	342

RNAV (GPS) RWY 17

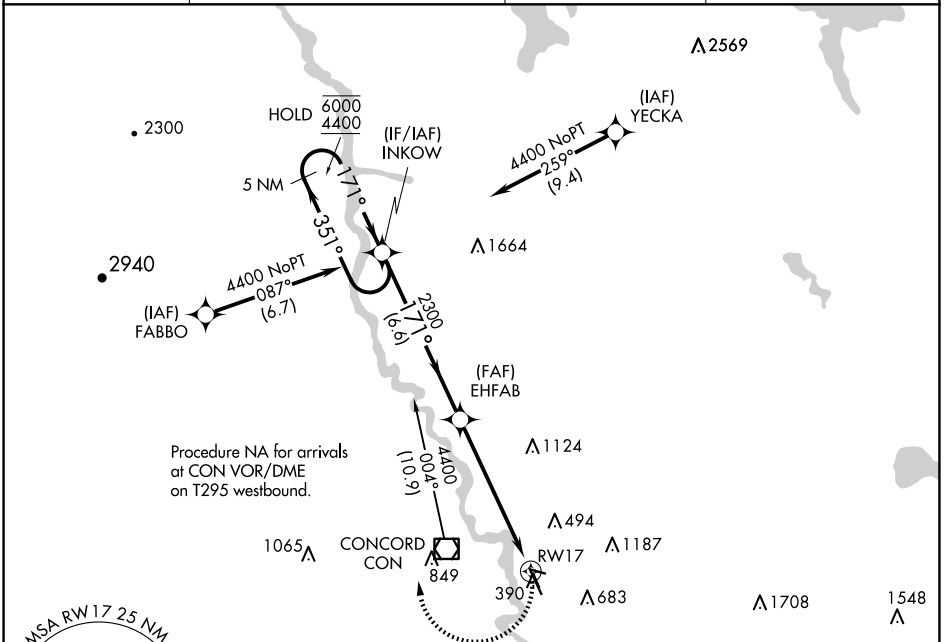
CONCORD MUNI (CON)

RNP APCH - GPS.

▼ Straight-in Rwy 17 NA at night, Circling Rwys 12, 17, 30 NA at night.
▲ Rwy 17 helicopter visibility reduction below 1 SM NA.

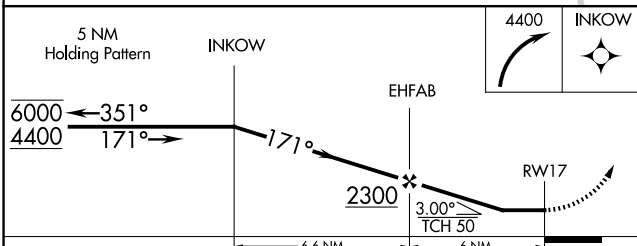
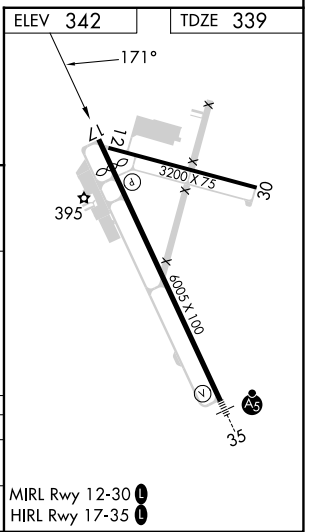
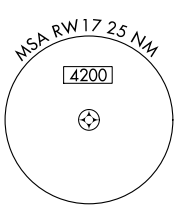
MISSED APPROACH: Climbing right turn to 4400 direct INKOW and hold, continue climb-in-hold to 4400.

ASOS	BOSTON APP CON	CLNC DEL	UNICOM
132.325	127.35 269.075	133.65	122.7 (CTAF) 0



NE-1, 20 FEB 2025 to 20 MAR 2025

NE-1, 20 FEB 2025 to 20 MAR 2025



CATEGORY	A	B	C	D
LNAV MDA	1000-1	661 (700-1)	1000-1 $\frac{7}{8}$	661 (700-1 $\frac{7}{8}$)
C CIRCLING	1000-1 658 (700-1)	1080-1 738 (800-1)	1500-3	1158 (1200-3)

MIRL Rwy 12-30 **0**
HIRL Rwy 17-35 **0**