

HI-TACAN X RWY 13R

TACAN NGP Chan 87	APCH CRS 147°	Rwy Idg TDZE Arprt Elev	8001 13 18
-----------------------------	-------------------------	-------------------------------	---------------------------------------

[USN]

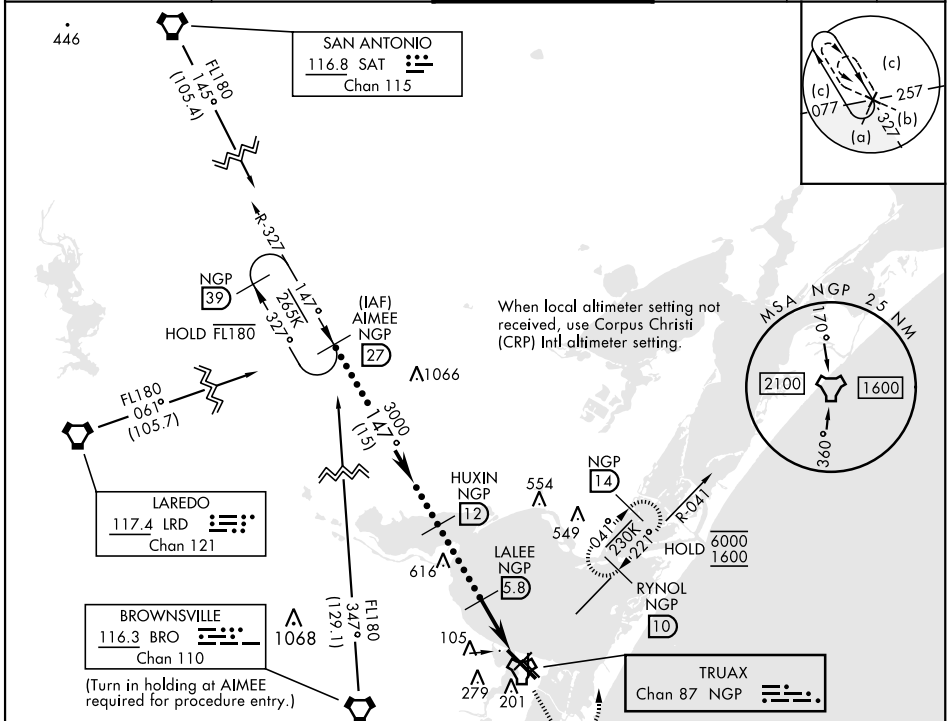
CORPUS CHRISTI NAS (TRUAX FLD) (KNGP)

V * When ALS inop, increase vis to 1½ miles.

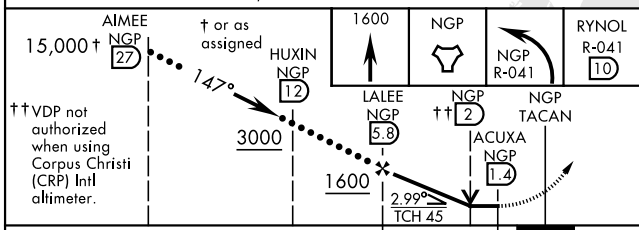
SALSF **A2**

MISSED APPROACH: Climb to 1600 direct NGP TACAN and turn left to intercept R-041 to RYNOL and hold.

ATIS ★ 127.9 290.9	APP CON 120.9 348.725	NAVY CORPUS TOWER ★ 134.85 0 340.2	GND CON 118.7 257.85	CLNC DEL 314.3	ASR/PAR
------------------------------	---------------------------------	--	--------------------------------	--------------------------	---------

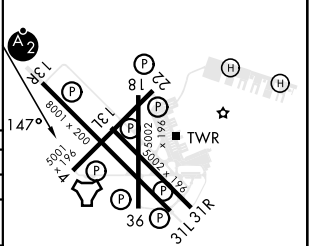


EMERG SAFE ALT 100 NM 11,100



CATEGORY	C	D	E
S-13R*	400-7/8	387 (400-7/8)	
C CIRCLING	520-1½ 502 (600-1½)	580-2	562 (600-2)
CORPUS CHRISTI (CRP) INTL ALTIMETER SETTING			
S-13R*	420-1	407 (500-1)	
C CIRCLING	540-1½ 522 (600-1½)	620-2 602 (700-2)	620-2¼ 602 (700-2¼)

ELEV	18	TDZE	13
------	----	------	----



HIRL Rwy 4-22, 13R-31L **0**
 HIRL Rwy 13L-31R, 18-36
 REIL Rwy 4-22, 13L-31R, 18-36, 31L

HI-TACAN X RWY 13R

SC-3, 20 FEB 2025 to 20 MAR 2025

SC-3, 20 FEB 2025 to 20 MAR 2025