

CORPUS CHRISTI, TEXAS

# ILS Z or LOC Z RWY 13R

CORPUS CHRISTI NAS (TRUAX FLD) (KNGP)

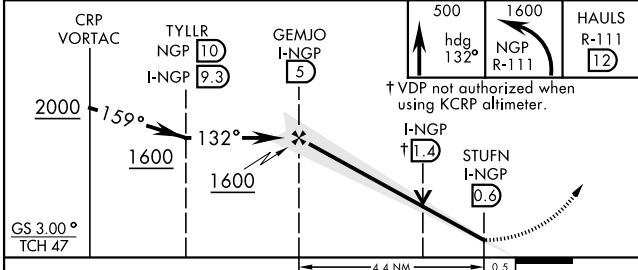
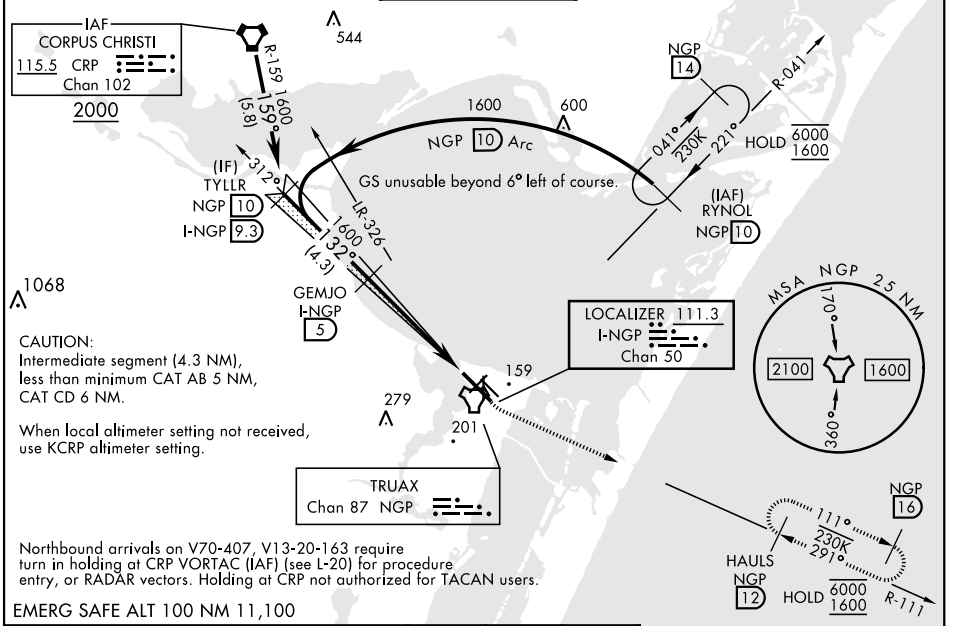
LOC/DME I-NGP <b>111.3</b> Chan <b>50</b>	APCH CRS <b>132°</b>	Rwy Idg TDZE Arpt Elev <b>8001</b> <b>13</b> <b>18</b>
---	-------------------------	---

[USN]

DME required  
 ▼ \*When ALS inop, increase CAT AB vis to 1 mile, CAT CD to 1/3 miles.

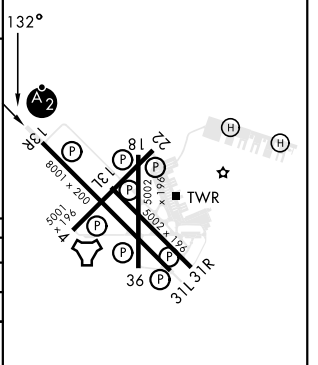
SALSF   
 MISSED APPROACH: Climb to 500 hdg 132°, then climbing left turn to 1600 and intercept NGP TACAN R-111 to HAULS and hold. Continue climb-in-hold to 1600.

ATIS★ <b>127.9 290.9</b>	APP CON <b>128.675 343.75</b>	NAVY CORPUS TOWER★ <b>134.85 340.2</b>	GND CON <b>118.7 257.85</b>	CLNC DEL <b>314.3</b>	ASR/PAR
-----------------------------	----------------------------------	---	--------------------------------	--------------------------	---------



ELEV	18	TDZE	13
------	----	------	----

CATEGORY	A	B	C	D
S-ILS 13R	213-3/4		200	(200-3/4)
S-LOC 13R*	460-3/4	447 (500-3/4)	460-1	447 (500-1)
CIRCLING	460-1	480-1	520-1 1/2	580-2
	442 (500-1)	462 (500-1)	502 (600-1 1/2)	562 (600-2)
CORPUS CHRISTI (CRP) INTL ALTIMETER SETTING				
S-ILS 13R	246-3/4		233	(300-3/4)
S-LOC 13R*	500-3/4	487 (500-3/4)	500-1 1/8	487 (500-1 1/8)
CIRCLING	500-1	482 (500-1)	560-1 1/2	620-2
			542 (600-1 1/2)	602 (700-2)



HIRL Rwy 4-22, 13R-31L   
 HIRL Rwy 13L-31R, 18-36   
 REIL Rwy 4-22, 13L-31R, 18-36, 31L

FAF to MAP 4.4 NM					
Knots	60	90	120	150	180
Min:Sec	4:24	2:56	2:12	1:46	1:28

CORPUS CHRISTI, TEXAS  
 Amdt 1 28NOV24

27°42'N-97°17'W

CORPUS CHRISTI NAS (TRUAX FLD) (KNGP)

# ILS Z or LOC Z RWY 13R

SC-3, 20 FEB 2025 to 20 MAR 2025

SC-3, 20 FEB 2025 to 20 MAR 2025