

CORPUS CHRISTI, TEXAS

RNAV (GPS) RWY 22

[USN] CORPUS CHRISTI NAS (TRUAX FLD) (KNGP)

APCH CRS	Rwy Idg	5001
222°	TDZE	15
	Arprt Elev	18

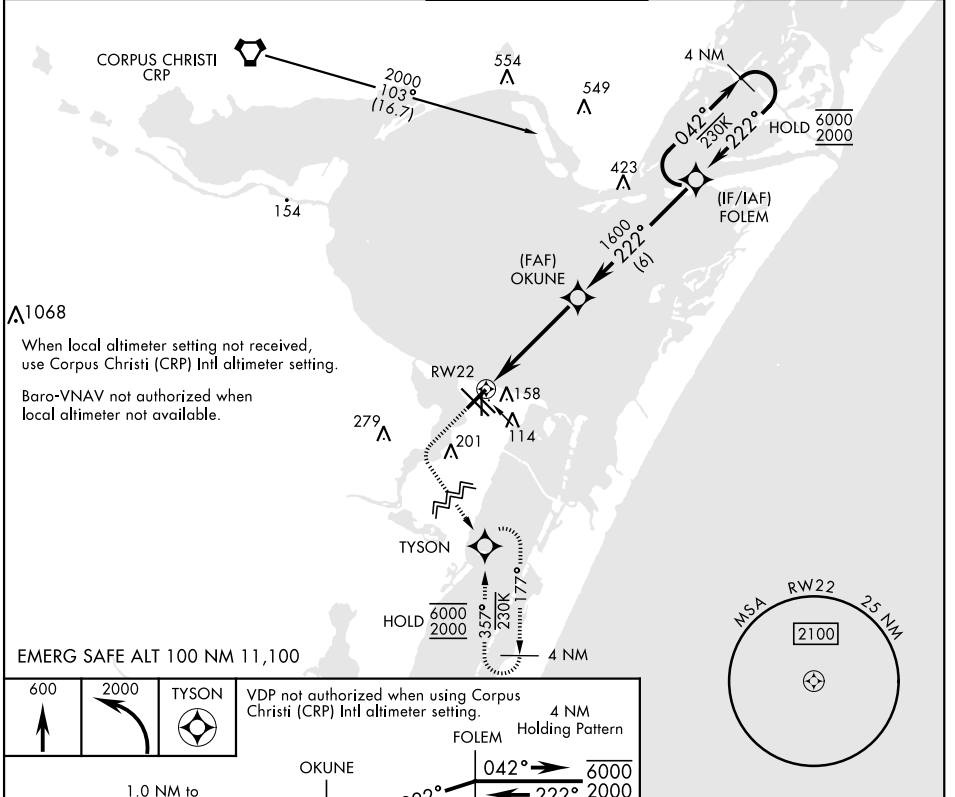
[USN]

RNP APCH

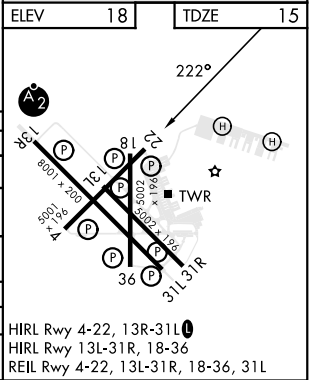
▼ For uncompensated Baro-VNAV systems, LNAV/VNAV NA below -15°C (5°F) or above 54°C (129°F).

MISSED APPROACH: Climb to 600, then climbing left turn to 2000 direct TYSON and hold.

ATIS ★	APP CON	NAVY CORPUS TOWER ★	GND CON	CLNC DEL	ASR/ PAR
127.9 290.9	128.675 343.75	134.85 340.2	118.7 257.85	314.3	



600	2000	TYSON	
↑	↻	⊙	
CATEGORY			
A		B	C D
LNAV MDA		380-1	365 (400-1)
LNAV/VNAV DA		320-7/8	305 (400-7/8) 380-1 (400-1)
CIRCLING		460-1 422 (500-1)	480-1 462 (500-1) 520-1 502 (600-1/2) 580-2 562 (600-2)
CORPUS CHRISTI (CRP) INTL ALTIMETER SETTING			
LNAV MDA		400-1 385 (400-1)	400-1 385 (400-1/2)
CIRCLING		500-1 482 (500-1)	540-1 522 (600-1/2) 620-2 602 (700-2)



CORPUS CHRISTI, TEXAS
Amdt 2 30NOV23

27°42'N-97°17'W

CORPUS CHRISTI NAS (TRUAX FLD) (KNGP)

RNAV (GPS) RWY 22

SC-3, 20 FEB 2025 to 20 MAR 2025

SC-3, 20 FEB 2025 to 20 MAR 2025