

CORPUS CHRISTI, TEXAS

RNAV (GPS) RWY 31L

CORPUS CHRISTI NAS (TRUAX FLD) (KNGP)

[USN]

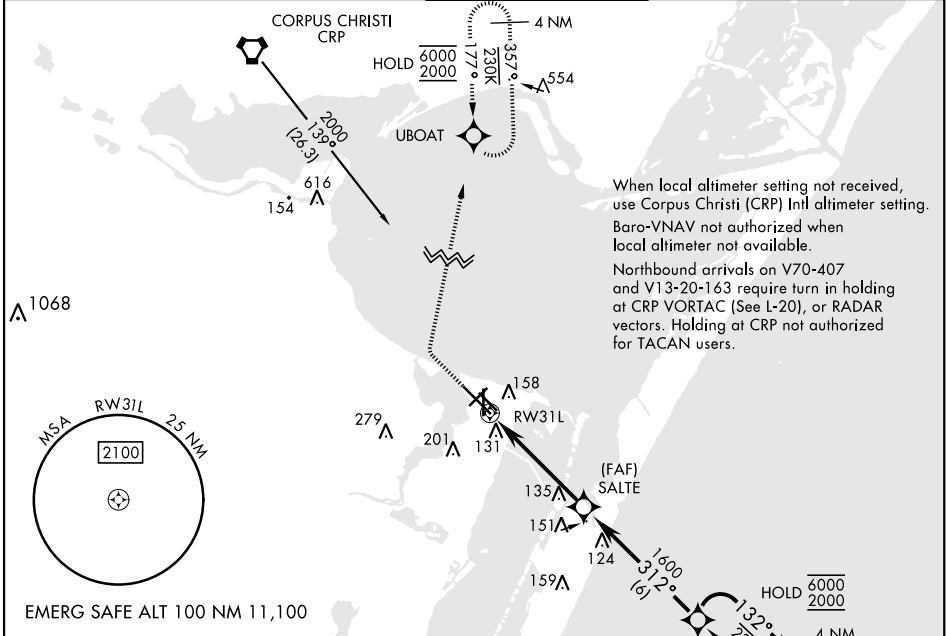
APCH CRS 312°	Rwy Idg 8001
	TDZE 17
	Arpt Elev 18

RNP APCH

▼ For uncompensated Baro-VNAV systems, LNAV/VNAV NA below -15°C (5°F) or above 54°C (129°F).

MISSED APPROACH: Climb to 600, then climbing right turn to 2000 direct UBOAT and hold.

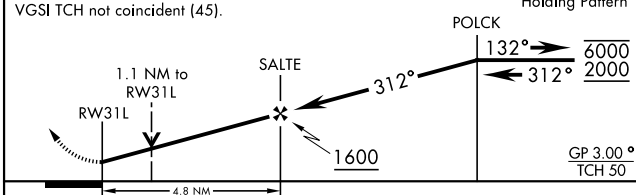
ATIS ★ 127.9 290.9	APP CON 128.675 343.75	NAVY CORPUS TOWER ★ 134.85 340.2	GND CON 118.7 257.85	CLNC DEL 314.3	ASR/ PAR
------------------------------	----------------------------------	--	--------------------------------	--------------------------	-------------



600	2000	UBOAT	VDP not authorized when using Corpus Christi (CRP) Intl altimeter setting
-----	------	-------	---

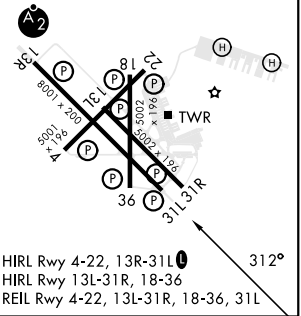
VGSi TCH not coincident (45).

4 NM Holding Pattern



ELEV	18	TDZE	17
------	----	------	----

CATEGORY	A	B	C	D
LNAV/VNAV DA	412-1 $\frac{1}{8}$		395	(400-1 $\frac{1}{8}$)
LNAV MDA	420-1	403 (500-1)	420-1 $\frac{1}{8}$	403 (500-1 $\frac{1}{8}$)
C CIRCLING	460-1 442 (500-1)	480-1 462 (500-1)	520-1 $\frac{1}{2}$ 502 (600-1 $\frac{1}{2}$)	580-2 562 (600-2)
CORPUS CHRISTI (CRP) INTL ALTIMETER SETTING				
LNAV MDA	460-1	443 (500-1)	460-1 $\frac{3}{8}$	443 (500-1 $\frac{3}{8}$)
C CIRCLING	500-1	482 (500-1)	540-1 $\frac{1}{2}$ 522 (600-1 $\frac{1}{2}$)	620-2 602 (700-2)



CORPUS CHRISTI, TEXAS
Amdt 2 30NOV23

27°42'N-97°17'W

CORPUS CHRISTI NAS (TRUAX FLD) (KNGP)

RNAV (GPS) RWY 31L

SC-3, 20 FEB 2025 to 20 MAR 2025

SC-3, 20 FEB 2025 to 20 MAR 2025