

CORPUS CHRISTI, TEXAS

RNAV (GPS) RWY 31R

CORPUS CHRISTI NAS (TRUAX FLD) (KNGP)

[USN]

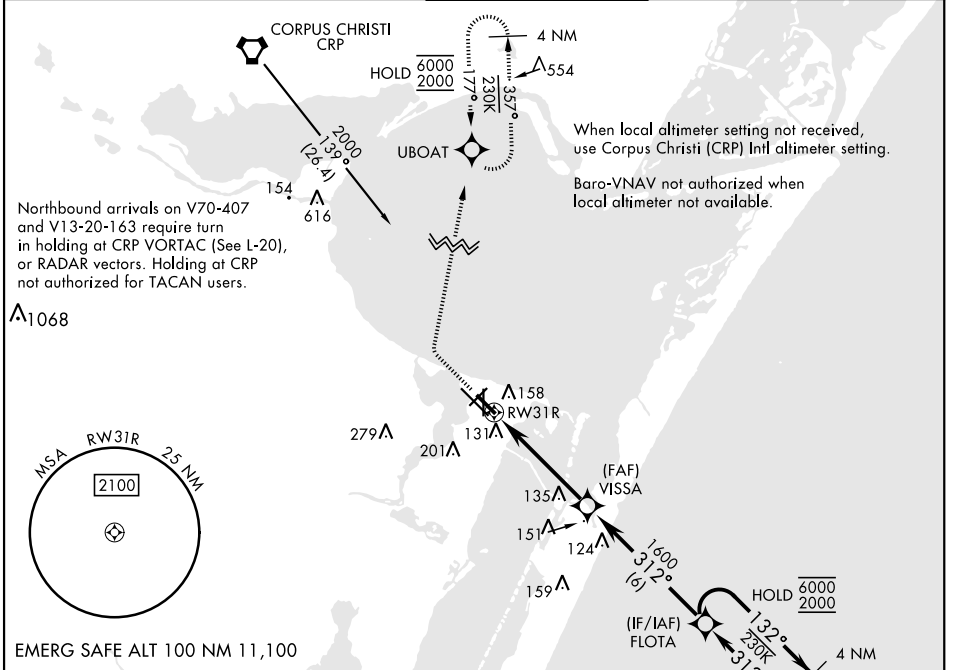
APCH CRS	Rwy ldg	5002
312°	TDZE	18
	Arprt Elev	18

RNP APCH

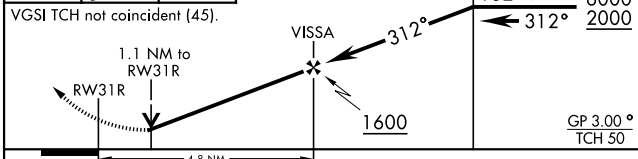
▼ For uncompensated Baro-VNAV systems, LNAV/VNAV NA below -15°C (5°F) or above 54°C (129°F).

MISSED APPROACH: Climb to 600, then climbing right turn to 2000 direct UBOAT and hold.

ATIS ★ 127.9 290.9	APP CON 128.675 343.75	NAVY CORPUS TOWER ★ 134.85 340.2	GND CON 118.7 257.85	CLNC DEL 314.3	ASR/PAR
------------------------------	----------------------------------	--	--------------------------------	--------------------------	---------



600	2000	UBOAT	VDP not authorized when using Corpus Christi (CRP) Intl altimeter setting.
VGS1 TCH not coincident (45).		FLOTA	4 NM Holding Pattern



CATEGORY	A	B	C	D
LNAV/VNAV DA	411-1½		393	(400-1½)
LNAV MDA	420-1	402 (500-1)	420-1½	402 (500-1½)
C CIRCLING	460-1	480-1	520-1½	580-2
	442 (500-1)	462 (500-1)	502 (600-1½)	562 (600-2)
CORPUS CHRISTI (CRP) INTL ALTIMETER SETTING				
LNAV MDA	460-1	442 (500-1)	460-1½	442 (500-1½)
C CIRCLING	500-1	482 (500-1)	540-1½	620-2
			522 (600-1½)	602 (700-2)

ELEV	18	TDZE	18
------	----	------	----

Terminal area chart showing RWY 31R, 31L, 13L, 13R, 4-22, and 311.31R. Includes TWR and HIRL/REIL information.

CORPUS CHRISTI, TEXAS
Amdt 2 25JAN24

27°42'N-97°17'W

CORPUS CHRISTI NAS (TRUAX FLD) (KNGP)

RNAV (GPS) RWY 31R

SC-3, 20 FEB 2025 to 20 MAR 2025

SC-3, 20 FEB 2025 to 20 MAR 2025