

RNAV (GPS) RWY 36

APCH CRS	Rwy Idg	5002
357°	TDZE	18
	Arpt Elev	18

[USN]

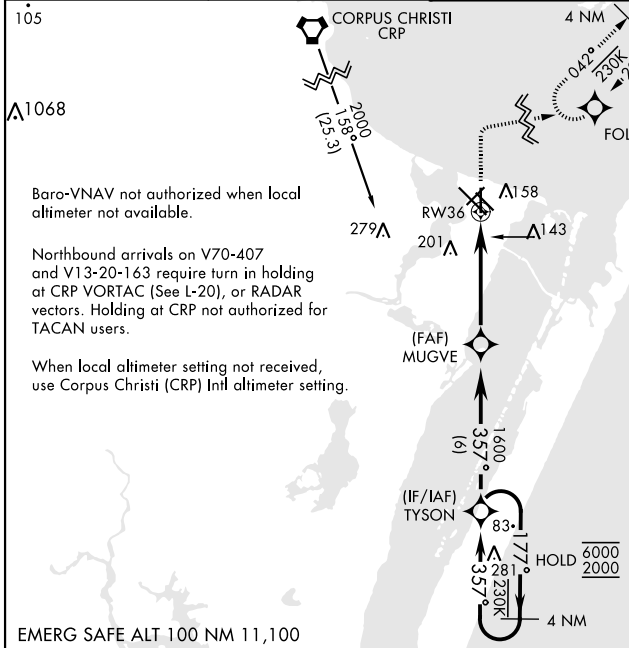
CORPUS CHRISTI NAS (TRUAX FLD) (KNGP)

RNP APCH

MISSED APPROACH: Climb to 600, then climbing right turn to 2000 direct FOLEM and hold.

For uncompensated Baro-VNAV systems, LNAV/VNAV NA below -15°C (5°F) or above 54°C (129°F).

ATIS ★ 127.9 290.9	APP CON 128.675 343.75	NAVY CORPUS TOWER ★ 134.85 0 340.2	GND CON 118.7 257.85	CLNC DEL 314.3	ASR/ PAR
------------------------------	----------------------------------	--	--------------------------------	--------------------------	-------------

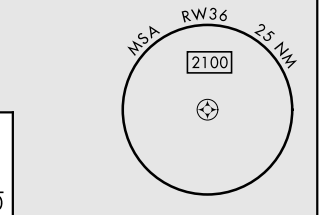
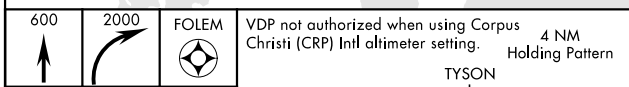


Baro-VNAV not authorized when local altimeter not available.

Northbound arrivals on V70-407 and V13-20-163 require turn in holding at CRP VORTAC (See L-20), or RADAR vectors. Holding at CRP not authorized for TACAN users.

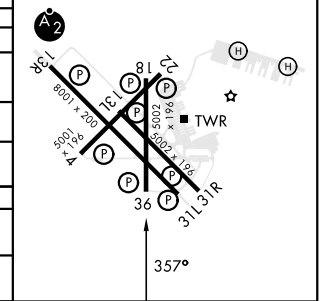
When local altimeter setting not received, use Corpus Christi (CRP) Intl altimeter setting.

EMERG SAFE ALT 100 NM 11,100



ELEV	18	TDZE	18
HIRL Rwy 4-22, 13R-31L			
HIRL Rwy 13L-31R, 18-36			
REL Rwy 4-22, 13L-31R, 18-36, 31L			

CATEGORY	A	B	C	D
LNAV MDA	400-1	382 (400-1)	400-1½	382 (400-1½)
LNAV/VNAV DA	400-1½		382 (400-1½)	
C CIRCLING	460-1 442 (500-1)	480-1 462 (500-1)	520-1½ 502 (600-1½)	580-2 562 (600-2)
CORPUS CHRISTI (CRP) INTL ALTIMETER SETTING				
LNAV MDA	440-1	422 (500-1)	440-1¼	422 (500-1¼)
C CIRCLING	500-1	482 (500-1)	540-1½ 522 (600-1½)	620-2 602 (700-2)



RNAV (GPS) RWY 36

SC-3, 20 FEB 2025 to 20 MAR 2025

SC-3, 20 FEB 2025 to 20 MAR 2025