

CORPUS CHRISTI, TEXAS

RNAV (GPS) RWY 4

[USN] CORPUS CHRISTI NAS (TRUAX FLD) (KNGP)

APCH CRS	Rwy ldg	5001
042°	TDZE	17
	Arprt Elev	18

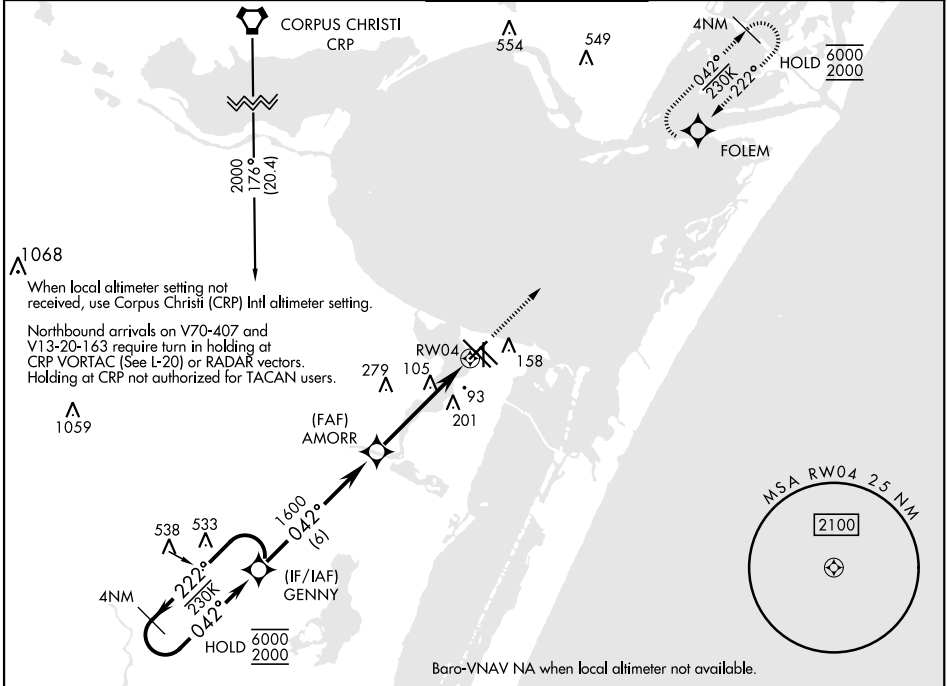
[USN]

RNP APCH

▼ For uncompensated Baro-VNAV systems, LNAV/VNAV NA below -15°C (5°F) or above 54°C (129°F)

MISSED APPROACH: Climb to 2000 direct FOLEM and hold.

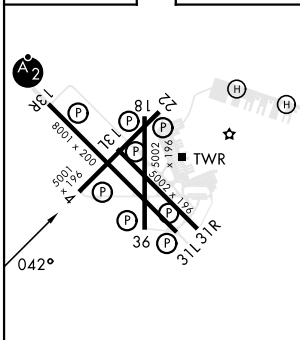
ATIS ★ 127.9 290.9	APP CON 128.675 343.75	NAVY CORPUS TOWER ★ 134.85 340.2	GND CON 118.7 257.85	CLNC DEL 314.3	ASR/ PAR
------------------------------	----------------------------------	--	--------------------------------	--------------------------	-------------



Baro-VNAV NA when local altimeter not available.

EMERG SAFE ALT 100 NM 11,100

ELEV	18	TDZE	17
------	----	------	----



HIRL Rwy 4-22, 13R-31L
 HIRL Rwy 13L-31R, 18-36
 REIL Rwy 4-22, 13L-31R, 18-36, 31L

4 NM Holding Pattern GENNY	VDP not authorized when using Corpus Christi (CRP) Intl altimeter setting.		2000	FOLEM
	2000	042°	222°	AMORR
	GP 3.00° TCH 50	1600	1 NM to RW04	RW04
			4.8 NM	
CATEGORY	A	B	C	D
LNAV/VNAV DA	267- ³ / ₄		250 (300- ³ / ₄)	
LNAV MDA	400-1	383 (400-1)	400-1 ¹ / ₈	383 (400-1 ¹ / ₈)
CIRCLING	460-1 442 (500-1)	480-1 462 (500-1)	520-1 ¹ / ₂ 502 (600-1 ¹ / ₂)	580-2 562 (600-2)
CORPUS CHRISTI (CRP) Intl ALTIMETER SETTING				
LNAV MDA	420-1	403 (500-1)	420-1 ¹ / ₈	403 (500-1 ¹ / ₈)
CIRCLING	500-1	482 (500-1)	540-1 ¹ / ₂ 522 (600-1 ¹ / ₂)	620-2 602 (700-2)

CORPUS CHRISTI, TEXAS

27°42'N-97°17'W

CORPUS CHRISTI NAS (TRUAX FLD) (KNGP)

Amdt 2 30NOV23

RNAV (GPS) RWY 4

SC-3, 20 FEB 2025 to 20 MAR 2025

SC-3, 20 FEB 2025 to 20 MAR 2025