

CORPUS CHRISTI, TEXAS

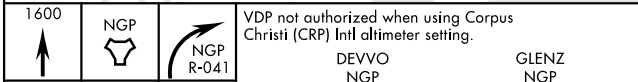
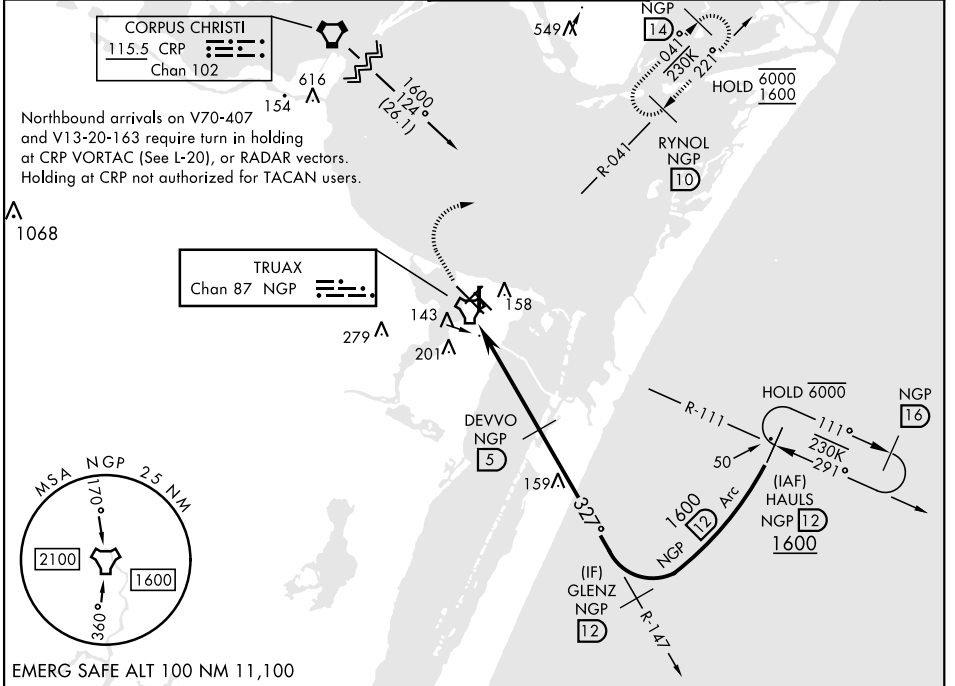
# TACAN RWY 36

TACAN NGP Chan <b>87</b>	APCH CRS <b>327°</b>	Rwy ldg TDZE Arprt Elev	<b>5002</b> <b>18</b> <b>18</b>
-----------------------------	-------------------------	-------------------------------	---------------------------------------

[USN]

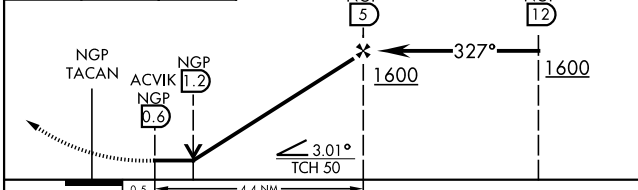
CORPUS CHRISTI NAS (TRUAX FLD) (KNGP)

<b>▼</b> When local altimeter setting not received, use Corpus Christi (CRP) Intl altimeter setting.	MISSED APPROACH: Climb to 1600 direct NGP TACAN and turn right to intercept R-041 to RYNOL and hold.				
ATIS ★ <b>127.9 290.9</b>	APP CON <b>128.675 343.75</b>	NAVY CORPUS TOWER ★ <b>134.85 340.2</b>	GND CON <b>118.7 257.85</b>	CLNC DEL <b>314.3</b>	ASR/ PAR

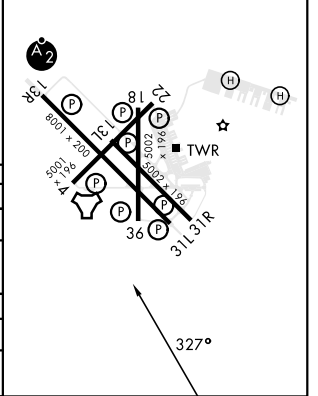


ELEV	18	TDZE	18
------	----	------	----

HIRL Rwy 4-22, 13R-31L  
HIRL Rwy 13L-31R, 18-36  
REIL Rwy 4-22, 13L-31R, 18-36, 31L



CATEGORY	A		B		C		D	
S-36	400-1	382	(400-1)		400-1 $\frac{1}{8}$	382	(400-1 $\frac{1}{8}$ )	
<b>C</b> CIRCLING	460-1		480-1		520-1 $\frac{1}{2}$		580-2	
	442 (500-1)		462 (500-1)		502 (600-1 $\frac{1}{2}$ )		562 (600-2)	
CORPUS CHRISTI (CRP) INTL ALTIMETER SETTING								
S-36	440-1	422	(500-1)		440-1 $\frac{1}{4}$	422	(500-1 $\frac{1}{4}$ )	
<b>C</b> CIRCLING	500-1		482 (500-1)		540-1 $\frac{1}{2}$		620-2	
					522 (600-1 $\frac{1}{2}$ )		602 (700-2)	



CORPUS CHRISTI, TEXAS 27° 42' N-97° 17' W CORPUS CHRISTI NAS (TRUAX FLD) (KNGP)

Amdt 2 30NOV23

# TACAN RWY 36

SC-3, 20 FEB 2025 to 20 MAR 2025

SC-3, 20 FEB 2025 to 20 MAR 2025